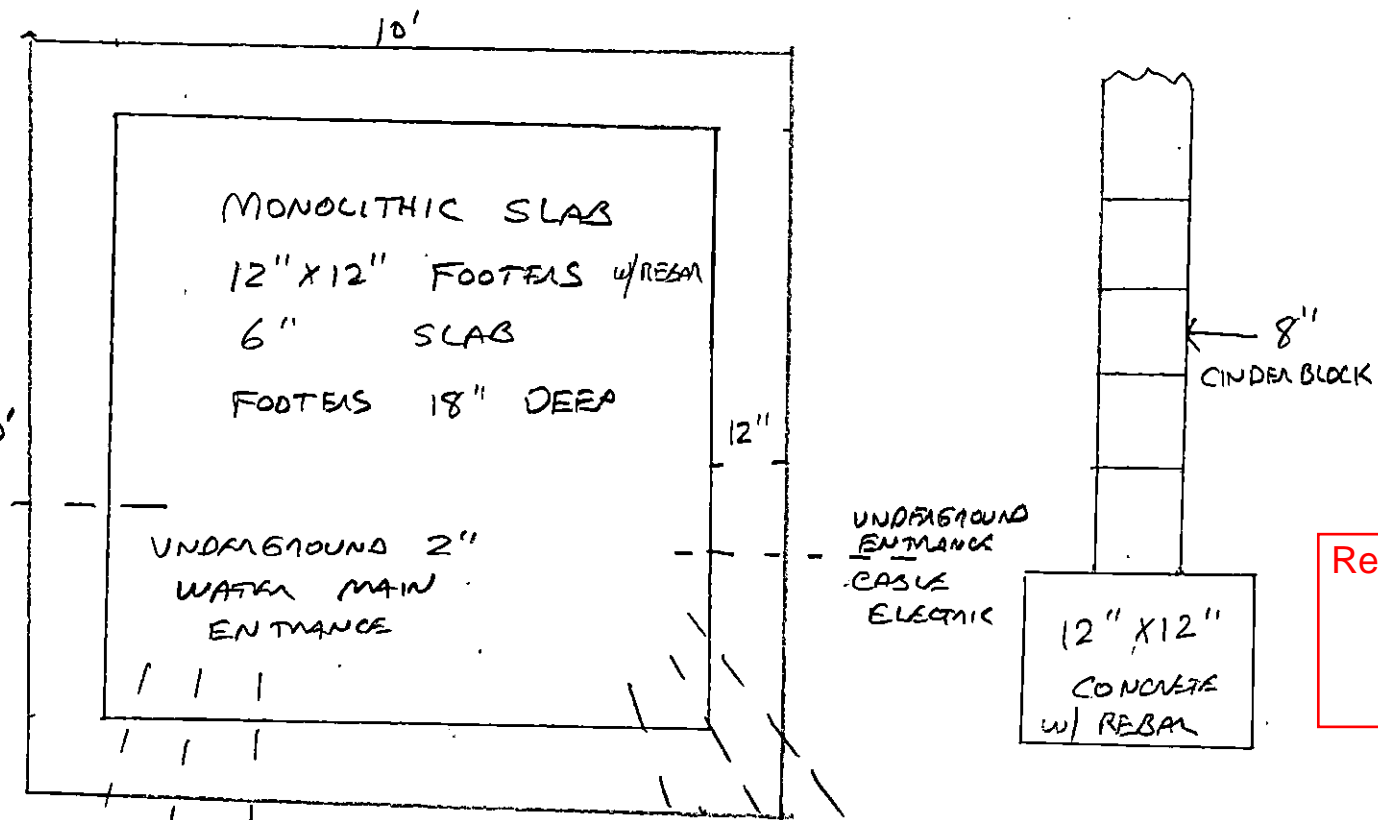


UTILITY SHED 10' X 10'

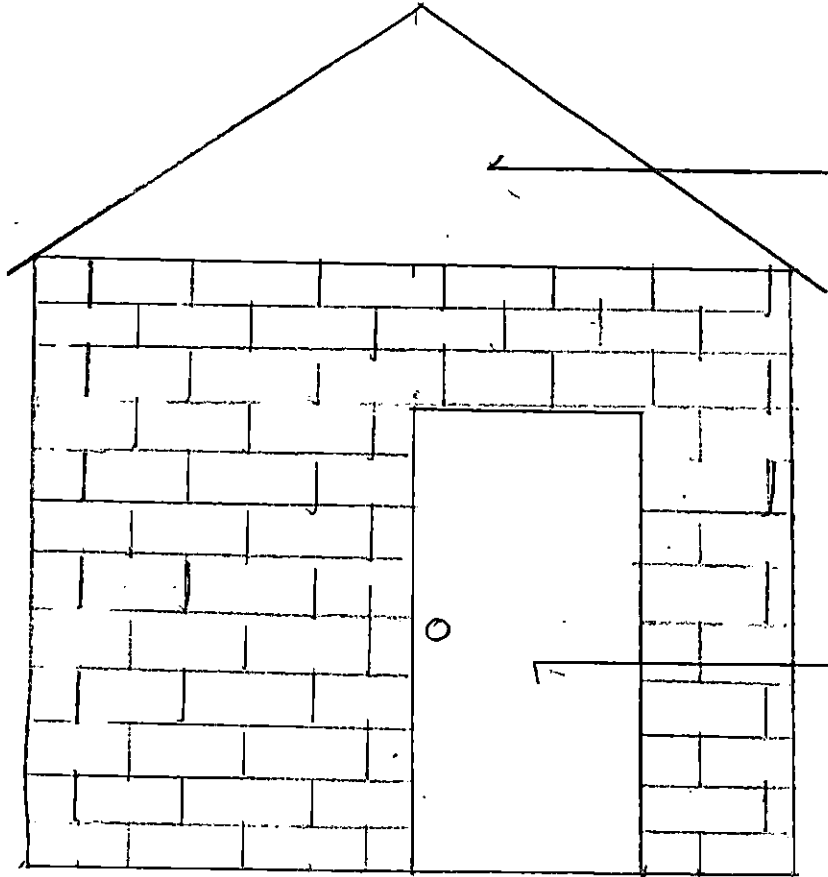


UNDERGROUND WATER LINES TO ANIMAL BARN

UNDERGROUND ELECTRIC SERVICE LINES TO ANIMAL BARN

Reviewed For Code Compliance By:  
D. Banks Wallace  
 Chief Deputy Fire Marshal  
 11/26/2018 1:49:02 PM

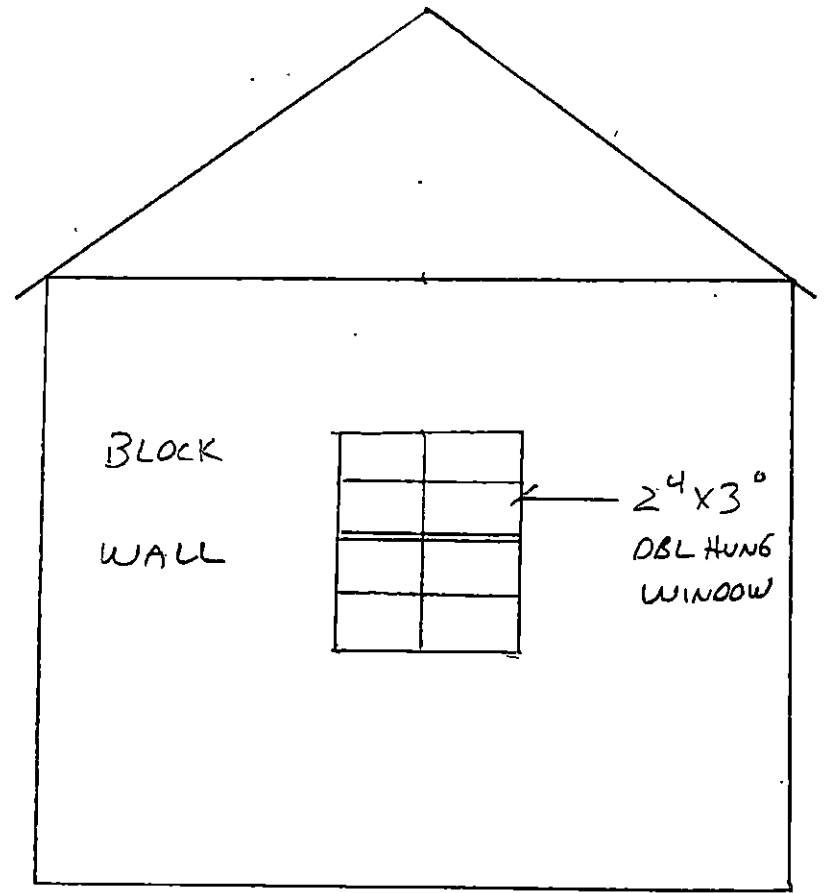
- 1) LED CEILING LIGHT
- 2) ELECTRICAL DISTRIBUTION BOX LOCATED INSIDE
- 3) WATER MAIN VALVES + DISTRIBUTION LOCATED INSIDE



5/12 PITCH  
HIP ROOF  
COMPOSITE SHINGLES  
2X8 RAFTERS  
2X8 CEILING JOISTS  
TREATED SILL PLATE 2X8

3'x6'  
STEEL P/H  
DOOR

FRONT ELEVATION



BLOCK  
WALL

2'x3'  
DBL HUNG  
WINDOW

REAR ELEVATION