

WIRING DEVICE NOTES

WIRING DEVICES SHALL BE SPECIFICATION GRADE, IVORY WITH NYLON FACE AS FOLLOWS:

	HUBBELL	P&S	ARROW HART
20 AMP DUPLEX GROUND FAULT RECEPTACLE SINGLE RECEPTACLE, 20A, 240V	53521 GF52621	53521 1591SIWL	53621 GF82001
SINGLE POLE SWITCH	12211	20AC11	19911
THREE WAY SWITCH	20AC31	12231	19931

COVER PLATES ON WALLS SHALL BE RIGID NON-METALLIC, SMOOTH FINISH, IVORY IN COLOR, AND SHALL BE STANDARD SIZE OVERSIZE PLATES ARE NOT ACCEPTABLE

ENGRAVED PLATES SHALL HAVE 3/16" LETTERS.
PHOTOELECTRIC CONTROL: TORK #2101, FACING NORTH

FLOOR BOXES: HUBBELL B-2436,B-4233, B-4333;STEEL CITY 640 SERIES

GENERAL ELECTRICAL NOTES

- INSTALL LIGHT CONTROL ON STRIKE SIDE OF DOOR (UNLESS OTHERWISE NOTED).
- COMBINE NO MORE THAN 6 CURRENT CARRYING CONDUCTORS IN ANY SINGLE HOME RUN FROM A PANEL.
- PROVIDE CIRCUIT BREAKER FILLER, BLANK COVER PLATE, FOR ALL THE EMPTY SPACES WITHIN THE PANELBOARD.
- PROVIDE BLANK COVER PLATE FOR ALL THE UNUSED JUNCTION OR DEVICE BOXES.
- EACH SINGLE PHASE BRANCH CIRCUIT SHALL BE PROVIDED WITH PHASE, DEDICATED NEUTRAL AND GROUND CONDUCTOR.
- ALL MOUNTING HEIGHTS INDICATED ARE TO BE CENTERLINE OF THE DEVICE BOX UNLESS OTHERWISE INDICATED.
- COORDINATE WITH ARCHITECTURAL ELEVATION FOR EXACT MOUNTING HEIGHT.
- ADJUST CIRCUITING AS NECESSARY TO BALANCE PANEL BOARD CONNECTED LOADS WITHIN ± 10%.
- CONSULT LIGHTING FIXTURE TYPE WITH ARCHITECT OR THE INTERIOR DESIGNER BEFORE ANY INSTALLATION.
- ALL SWITCHING TO BE CONVENTIONAL UNLESS OTHERWISE IS NOTED.
- ANY EXTERIOR OUTLET LOCATION TO BE CONFIRMED WITH ARCHITECT OR LANDSCAPE CONTRACTOR.
- DIMENSIONS ARE TAKEN FROM THE CENTER OF THE OUTLET UNLESS OTHERWISE IS NOTED.
- CONTRACTOR TO PROVIDE INDIVIDUAL METERING FOR EACH DWELLING UNITS PER IECC SECTION 405.7.
- CONTRACTOR TO COORDINATE WITH ARCHITECT TO PROVIDE CLOSED (LOCKABLE DOOR) UTILITY ROOM FOR ELECTRICAL PANELS PER NEC 240.24(B). ALSO VERIFY REQUIRED ELECTRICAL CLEARANCE FOR MDP PER NEC110.26.
- PROVIDE ALL DEVICES MOUNTED ABOVE COUNTERS SHALL BE AT 44" A.F.F TO CENTER-LINE OF DEVICE (TYPICAL) OR 42" A.F.F TO CENTER-LINE OF DEVICE (ADA UNITS), U.N.O., ALL WALL MOUNTED DEVICES SHALL BE MAXIMUM OF 48" AND MINIMUM OF 18" A.F.F., U.N.O..
- PROVIDE FIRE CAULKING AT TOP AND BOTTOM PLATES.
- DO NOT PENETRATE ANY 2-HOUR PARTITION WALLS BETWEEN BUILDINGS, ARCHITECT TO PROVIDE '2' FUR-OUT FOR ELECTRICAL WIRING INSIDE UNITS.
- WHERE A FIRE ALARM SYSTEM IS INSTALLED, ACTUATION OF THE AUTOMATIC SPRINKLER SYSTEM SHALL ACTUATE THE BUILDING FIRE ALARM SYSTEM.
- LIGHTING FIXTURE LAYOUTS INDICATED ON PLAN ARE FOR CONVENIENCE ONLY. ELECTRICAL CONTRACTOR SHALL COORDINATE WITH THE ARCHITECT THE LIGHTING FIXTURE LAYOUT AND INSTALL ACCORDINGLY.
- GENERAL CONTRACTOR SHALL COORDINATE CEILING INSTALLATION AS REQUIRED TO ALLOW ELECTRICAL CONTRACTOR TO INSTALL LIGHTING FIXTURES AS INDICATED.
- ALL DOWN LIGHTS SHALL BE ALIGNED IN CEILING UNLESS OTHERWISE NOTED.
- EXTEND TO DUAL LEVEL LIGHTING SWITCHES AT SWITCH BANK.
- PROVIDE BLDG MOUNTED PHOTOCCELL TO CONTROL FIXTURE AT ENTRANCE.
- PROVIDE ARC DEFAULT BREAKERS ON BEDROOM CIRCUITS PER 2017 NEC ART. 210-12.
- BATHROOMS TO BE CIRCUITED INDEPENDENTLY OF REST OF UNIT PER 2017 NEC ART. 210-11.
- PROVIDE ARC-FAULT CIRCUIT INTERRUPTING (AFCI) BREAKER TO ALL BRANCH CIRCUIT SERVING ALL OUTLETS AND DEVICES AS PER SECTION 210.52(A).
- ALL SMOKE DETECTORS ARE HARD WIRED,INTERCONNECTED AND BATTERY BACKED.
- AT LEAST ONE GFCI/WP RECEPTACLE IS REQUIRED AT THE FRONT AND BACK 1 FEET ABOVE OF THE HOUSE. SUCH RECEPTACLES CANNOT BE MORE THAN 6' THE GROUND PER NEC 210.52E(1).
- BALCONIES, DECKS AND PORCHES THAT ARE ACCESSIBLE FROM INSIDE SHALL HAVE AT LEAST ONE RECEPTACLE OUTLET INSTALLED PER NEC 210.52E(3).
- ALL ELECTRICAL WIRING, BOXES, CONDUITS AND RACEWAYS PENETRATING FIRE-RESISTANCE RATED MEMBRANES MUST BE PROPERLY SEALED TO ASSURE THAT THE REQUIRED FIRE-RESISTANCE RATING IS NOT REDUCED.
- ALL LIGHTING THROUGH OUT PROJECT ARE OF HIGH EFFICIENCY LIGHTING TO INCLUDE EXTERIOR LIGHTING.
- ALL EXTERIOR OUTLETS AND RECEPTACLES ARE WEATHER RESISTANT PER NEC 406.9(A) & (B). TYPICAL.
- ALL TELEPHONE LINES ARE TO BE CONCEALED AND OUTLETS RECESSED. ALL TELEPHONE SERVICE TO BE CAPABLE OF CARRYING LINES IN EACH FLOOR AS DETERMINED BY THE ARCHITECT OR OWNER.
- ALL SWITCHES DIMMERS ARE TO BE TOGGLE TYPE. ALL OUTLETS ARE TO BE RECESSED. ALL WIRING IS TO BE CONCEALED. ALL SMOKE DETECTORS TO BE NEW HARDWIRED.
- VERIFY FIXTURE AND OUTLET LOCATIONS WITH OWNER PRIOR TO RUNNING ELECTRICAL FEEDS.

GENERAL POWER COORDINATION NOTES

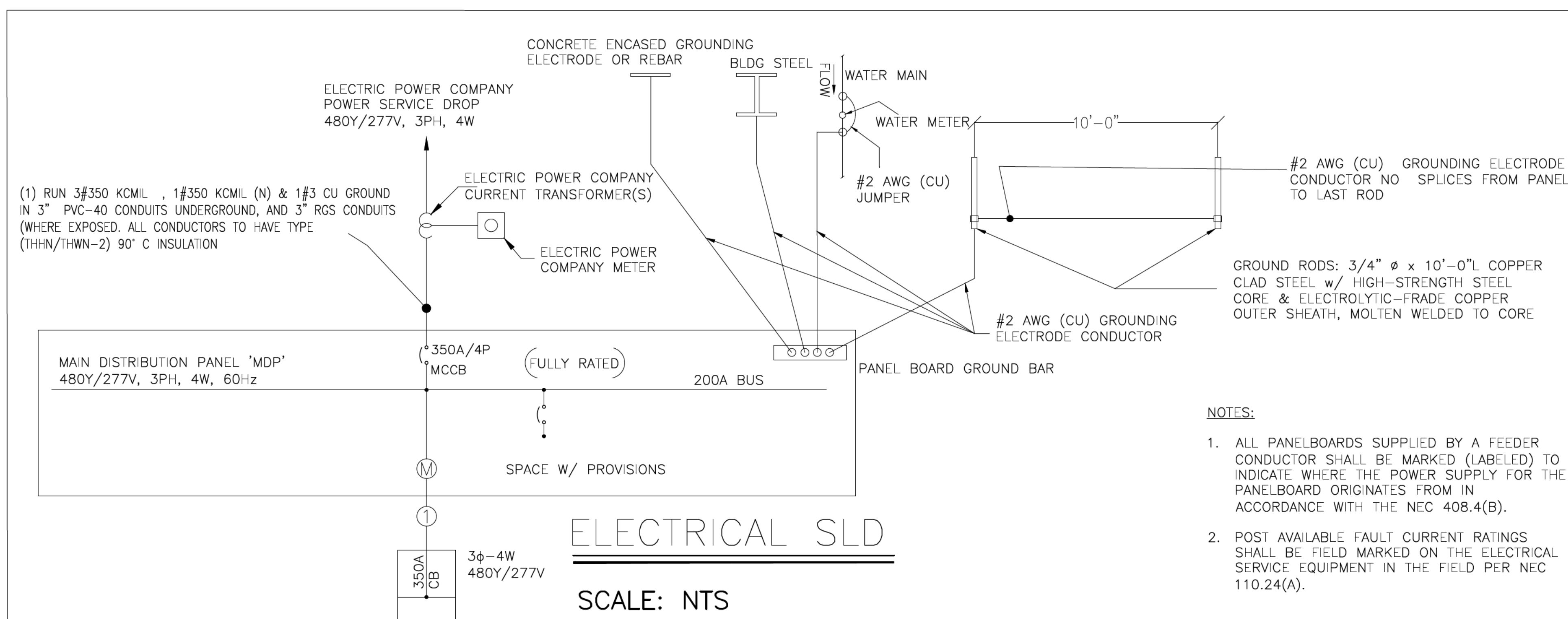
- WHEREVER POSSIBLE, OUTLETS SHALL BE GANGED TO REQUIRE A SINGLE PLATE.
- COORDINATE LOCATIONS OF RECEPTACLES AND SWITCHES MOUNTED ON MILLWORK/BACKSLASH MILLWORK/CABINET SUPPLIER. POSITION JUNCTION BOXES TO FINISH FLUSH WITH MILLWORK/BACKSLASH FACE.
- MOUNT ALL NEW OUTLETS AT +18" A.F.F. ON CENTER, UNO.
- OUTLETS ABOVE COUNTERTOPS TO BE MOUNTED HORIZONTALLY, 6" ABOVE COUNTERTOP O.C.
- OUTLETS LOCATED ADJACENT TO SINKS AND IN BATHROOM TO BE GROUND FAULT INTERRUPT PROTECTED.
- ITEMS INDICATED AS EXISTING WILL BE TERMED "EXISTING" OR "E", UNO.
- ALL ELECTRICAL DEVICES SUCH AS OUTLETS & SWITCHES SHALL BE DECORATED BY LEVITON.

GENERAL LIGHTING COORDINATION NOTES

- REFER TO SCHEDULES, LEGENDS AND TYPICAL DETAILS FOR ADDITIONAL INFORMATION.
- REFER TO LIGHTING PLANS FOR LIGHT FIXTURE AND LIGHT SWITCH LOCATIONS.
- PAINT EXISTING AND NEW DRYWALL CEILING, UNO.
- SWITCH HEIGHT TO BE 38" AFF, UNO. WHEN SWITCHES AND DIMMERS ARE ADJACENT, ALIGN THE HORIZONTAL CENTERLINES. PROVIDE 1" BETWEEN EACH DEVICE FACE PLATE.
- EXISTING LIFE SAFETY DEVICES TO REMAIN DURING CONSTRUCTION.
- DIMENSIONS ARE INDICATED FROM FACE OF SCHEDULED EXISTING PARTITION TO CENTER OF LIGHT FIXTURE.
- LIGHTS, FIXTURES, EXIT SIGNS AND OTHER DEVICES SHOWN FOR FIXTURE LOCATION AND TYPE ONLY.
- GYP BOARD IN THE BATHROOM CEILING TO BE MOISTURE RESISTANT. REPAIR DRYWALL CEILING AS NECESSARY IN LOCATIONS OF LIGHT FIXTURE DEMOLITION AND INSTALLATION.
- FOR ALL LIGHT FIXTURES, REFER TO MANUFACTURER'S RECOMMENDATION FOR FRAMING AND SUPPORT OF CEILING SYSTEM.
- LIGHTING FIXTURE LOCATIONS, AS SHOWN ON LIGHTING PLANS, SHALL TAKE PRECEDENCE OVER ALL OTHER SYSTEMS. OBTAIN WRITTEN APPROVAL FROM ARCHITECT PRIOR TO EXECUTING ANY CHANGES IN LOCATION.
- CONFIRM THAT ALL FIXTURES ARE U.L. OR E.T.L LISTED AS A SYSTEM AND COMPLY WITH ALL NATIONAL, STATE, AND LOCAL CODES.
- CONFIRM THE FINAL CEILING MATERIAL AND INSTALLATION IN ALL LOCATIONS AND PROVIDE THE NECESSARY TRIMS, HANGERS AND HARDWARE AS REQUIRED.
- PROVIDE SELF-FLANGED, OVERLAP TRIMS OF THE SAME MATERIAL AND FINISH AS THE REFLECTOR FOR ALL RECESSED FIXTURES.
- ASSURE THAT ALL OPEN REFLECTOR AND ALZAK CONE APERTURE TYPE FIXTURES MATCH IN COLOR AND APPEARANCE REGARDLESS OF TYPES AND SOURCE.
- ASSURE THAT ALL OPEN REFLECTOR AND ALZAK CONE APERTURE TYPE FIXTURES ARE FREE OF SCRATCHES, DENTS, DUST, FINGERPRINTS, ETC., AT CLOSE OF JOB.
- ALL INTEGRAL BALLAST AND/OR TRANSFORMER TYPE FIXTURES HAVE BEEN SPECIFIED WITH 120-VOLT PRIMARY. CONFIRM ACTUAL VOLTAGE REQUIREMENTS AND SUPPLY.
- CONFIRM ALL FINISHES NOT SPECIFIED WITH ARCHITECT PRIOR TO ORDERING.
- CONSTRUCT ALL ARCHITECTURAL COVE TYPE FIXTURES AS DETAILED AND DIMENSIONED. OBTAIN WRITTEN APPROVAL FROM ARCHITECT PRIOR TO UNDERTAKING ANY CHANGES TO DIMENSIONS OR CONFIGURATION.
- CONFIRM WITH ARCHITECT THE LOCATION, PENDANT LENGTH, AND EXACT FINAL A.F.F. MOUNTING HEIGHT FOR ALL SUSPENDED FIXTURE TYPES.
- CONFIRM AND SUPPLY THE EXACT TYPE, SIZE AND QUANTITY OF ALL LAMPS REQUIRED FOR EACH FIXTURE AND TYPE.
- AT CLOSE OF JOB, RE-LAMP ALL FIXTURES WITH NEW LAMPS AND PROVIDE OWNER WITH 2% SPARE (NEW) LAMPS OF ALL LAMP TYPES.
- PROVIDE 3000 KELVIN LAMPS FOR ALL FLUORESCENT FIXTURES.
- SIZE ALL TRANSFORMERS PER NATIONAL ELECTRIC CODES.
- FOR LIGHT SWITCHING AND LIGHT SWITCH LOCATIONS REFER TO ARCHITECTURAL DRAWINGS. COORDINATE ALL SWITCHES WITH MILLWORK/CABINETS.
- SUBMIT PRODUCT DATA FOR ARCHITECT'S APPROVAL.
- GANG ALL ADJACENT SWITCHES UNDER ONE COVER PLATE.
- ALL DEVICE PLATES TO BE WHITE.
- ALL SWITCHES TO BE DECORATED BY LEVITON.
- ALL LIGHTING FIXTURES TO BE APPROVED BY THE ARCH./ OWNER PRIOR TO ORDERING AND INSTALLING.
- ARCHITECT TO SELECT COLOR OF LIGHTING FIXTURES.
- REFER TO ARCHITECTURAL REFLECTED CEILING AND ELEVATION PLANS FOR EXACT LOCATION AND MONITORING HEIGHTS.
- A MINIMUM OF 75% OF THE LAMPS IN PERMANENTLY INSTALLED LIGHTING FIXTURES SHALL BE HIGH-EFFICIENCY LAMPS OR A MINIMUM OF 75% OF THE PERMANENTLY INSTALLED LIGHTING FIXTURES SHALL CONTAIN ONLY HIGH EFFICIENCY LAMPS.
- EXTERIOR LIGHTING SHALL COMPLY WITH THE REQUIREMENTS OF TABLE 409.2 FOR THE EXTERIOR LIGHTING ZONES(LZ) APPROPRIATE TO THE BUILDING SITE.
- STRAIGHT, DOUBLE-ENDED FLUORESCENT LAMPS LESS THAN 6 FEET IN NOMINAL LENGTH AND WITH BI-PIN BASES SHALL CONTAIN NOT MORE THAN 5 MILLIGRAMS OF MERCURY PER LAMP.
- INTERNALLY ILLUMINATED EXIT SIGNS SHALL NOT EXCEED 5 WATTS PER SIDE.
- IC-RATED RECESSED LIGHTING FIXTURES SEALED AT HOUSING/INTERIOR FINISH AND LABELED TO INDICATE EQUAL OR LESS THAN 2.0 CFM LEAKAGE AT 75 PA.

ELECTRICAL SYMBOLS

\$	1 WAY SWITCH
\$ ³	2 WAY SWITCH
⊕	DUPLEX WALL OUTLET
⊕ ^{HL}	DATA AND RECEPTACLE OUTLET
110V SD CIRC	CO AND SMOKE COMBINATION DETECTOR
⊠	EXHAUST FAN
▽	FLUSH TYPE PANEL BOARD
⊞	ELECTRIC METER
⊞	HORN
⊞	MANUAL PULL STATION
⊞	SPEAKER/HORN WITH STROBE LIGHT
⊞	TV,DATA,VOICE AND OUTLET
⊞	GROUND FAULT INTERRUPTING DUPLEX RECEPTACLE
⊞	EGRESS LIGHT
⊞	DISCONNECTING SWITCH
⊞	WEATHER PROTECTED GFI RECEPTACLE
—	PENDANT LED TUBE LIGHT
⊞	PENDANT ROUND LIGHT
⊞	OUTDOOR LIGHT



NO.	DATE	DESCRIPTIONS
00	11/23/2020	INITIAL DESIGN
		REVISIONS

ELECTRICAL NOTES, LEGENDS AND SLD

SITE ADDRESS:
1253 Atkins Rd, 1253
Fuquay-Varina, NC 27526

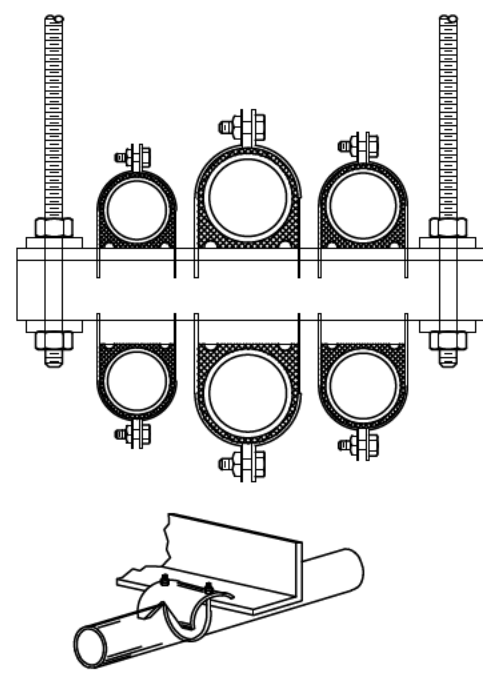


EQUAGEN
engineering by ingenuity

FIRM LIC. # 1869

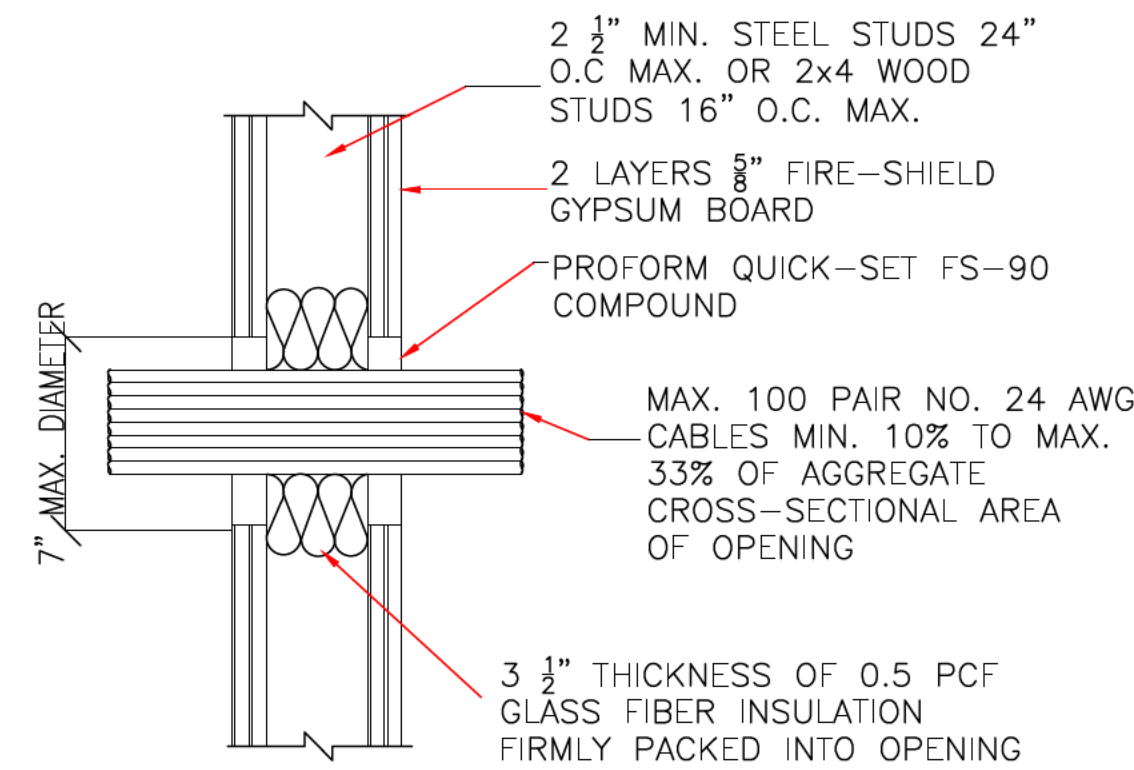
121 EDINBURGH SOUTH DRIVE, SUITE 103
CARY, NC 27511
PHONE: 919.444.5442
EMAIL: MOTI.KC@EQUAGEN.COM

DRAWN BY:	SMB
CHECKED BY:	MKC
DATE:	11-23-2020
SCALE:	AS SHOWN
E002	20-1035

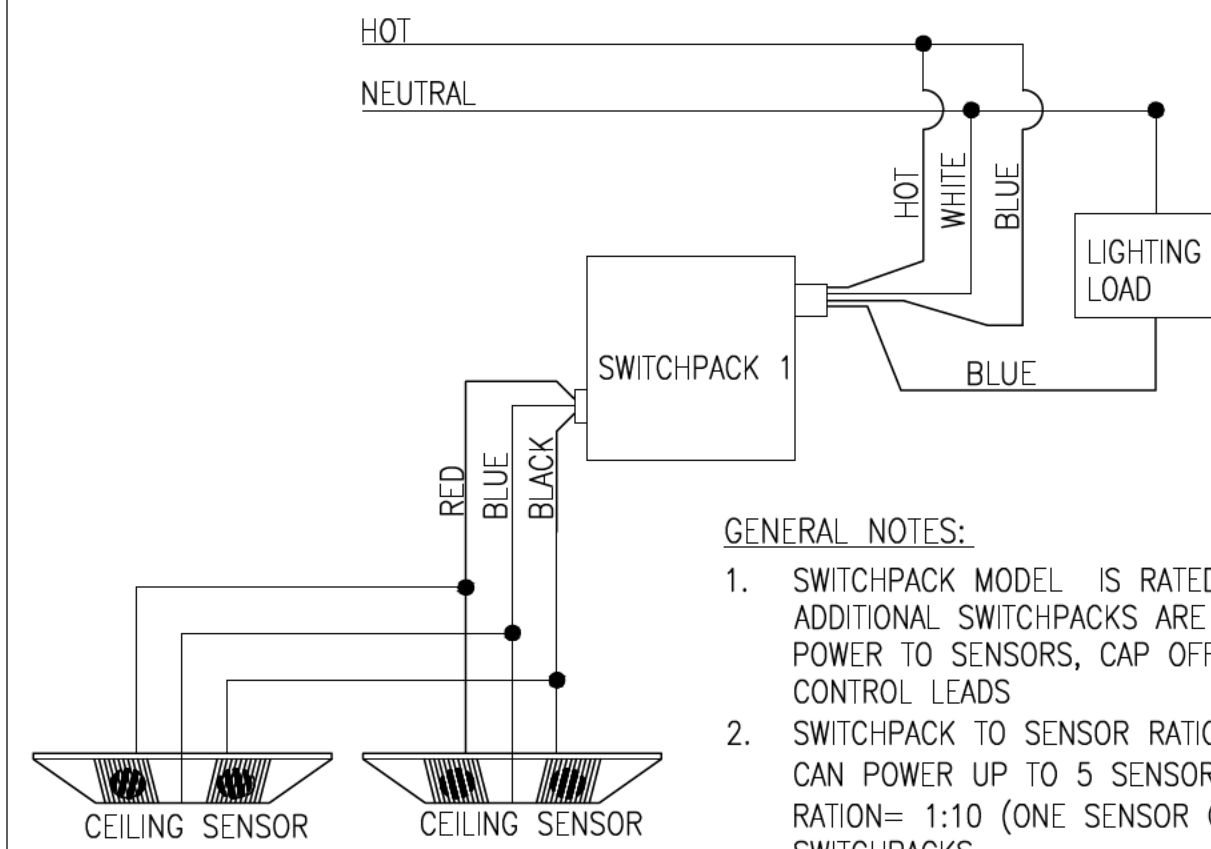


- NOTES:
- USE HEX NUT COMBINATION FOR VERTICAL FIELD ADJUSTMENT, USE CLAMPS FOR HORIZONTAL FIELD ADJUSTMENT
 - PROVIDE SUPPORTS AT A 10' MAXIMUM SEPARATION

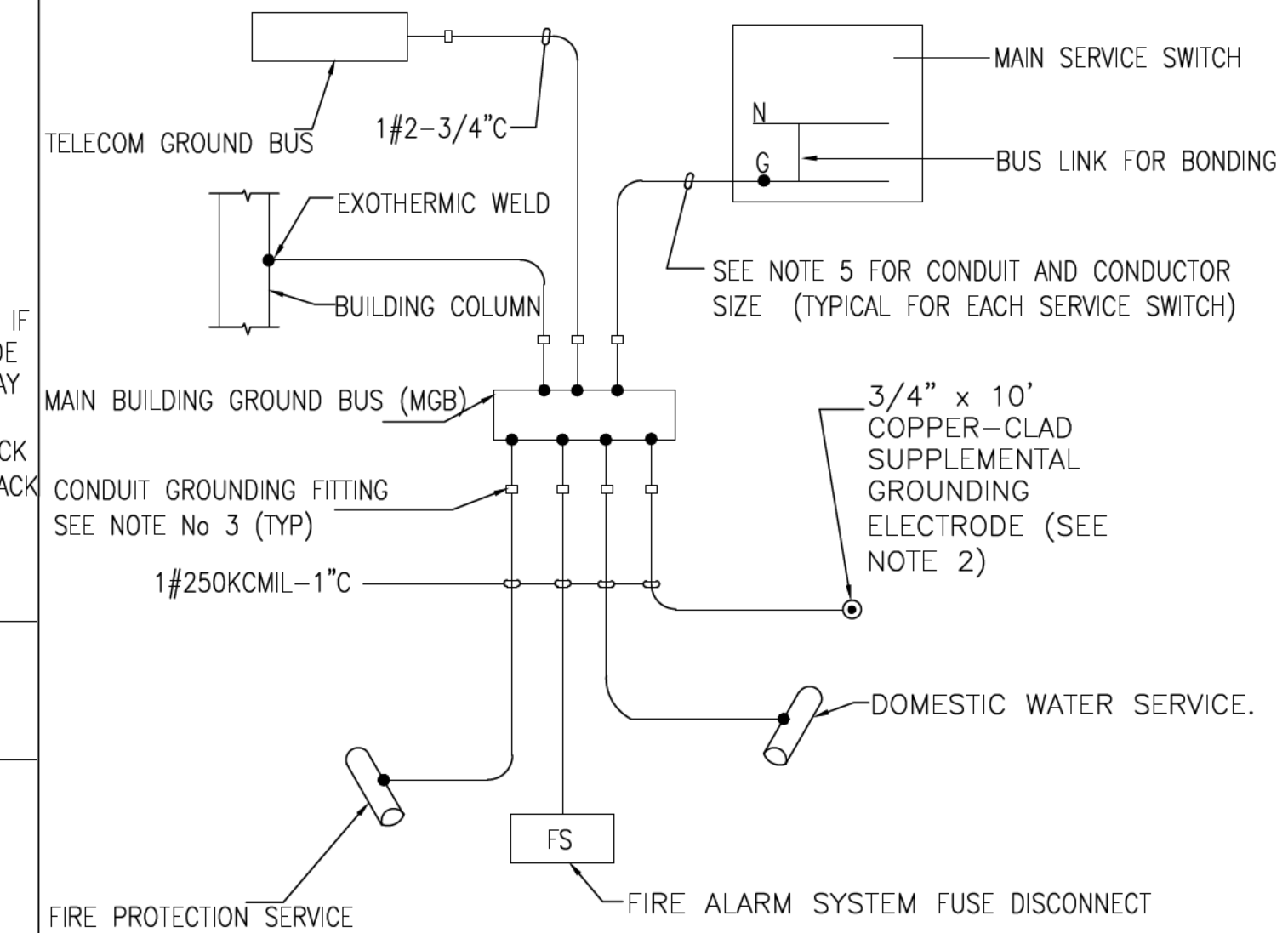
1 CONDUIT SUPPORT DETAIL
N.T.S.



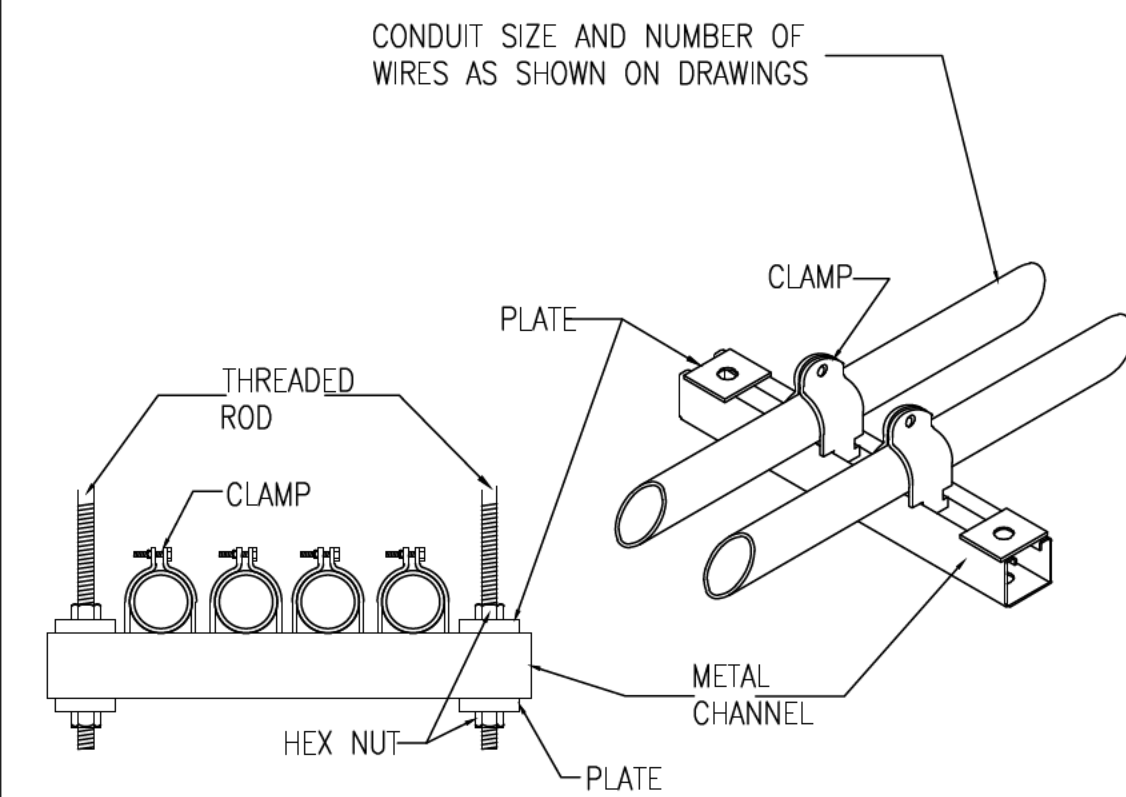
2 CABLE PENETRATION THROUGH WALL
N.T.S.



3 TYPICAL VACANCY SENSOR DETAIL
N.T.S.

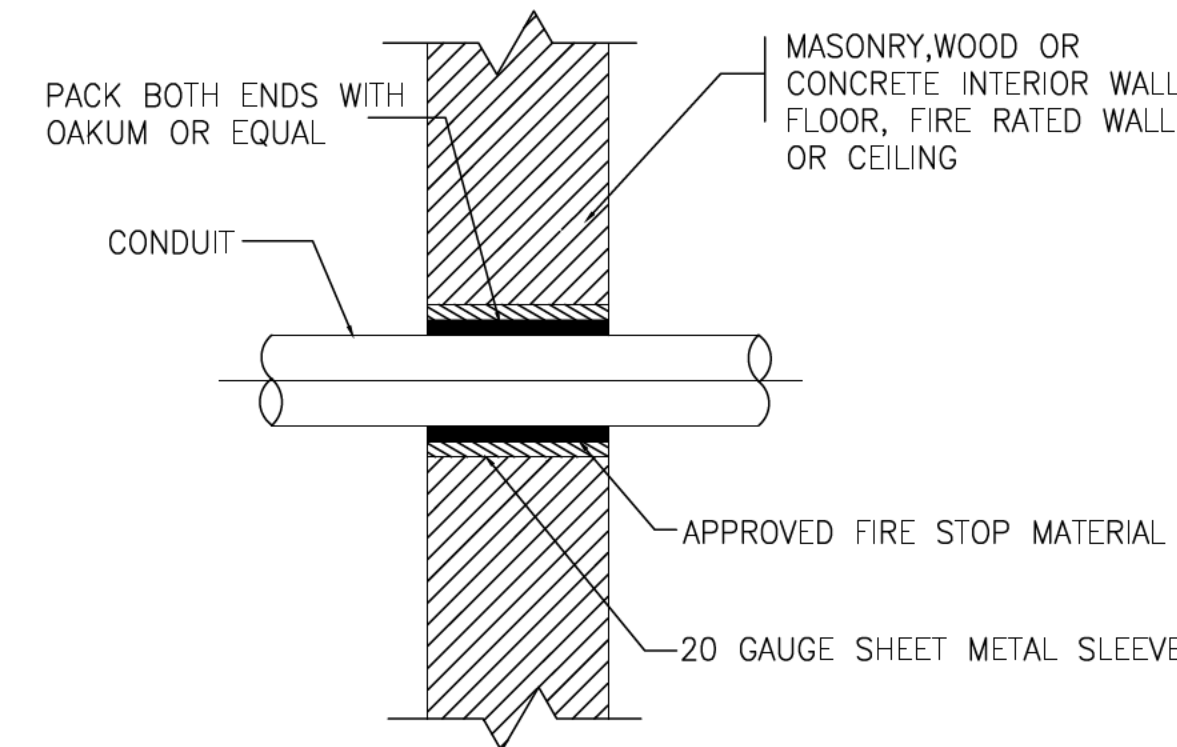


4 ELECTRIC SERVICE GROUNDING SCHEMATIC
N.T.S.



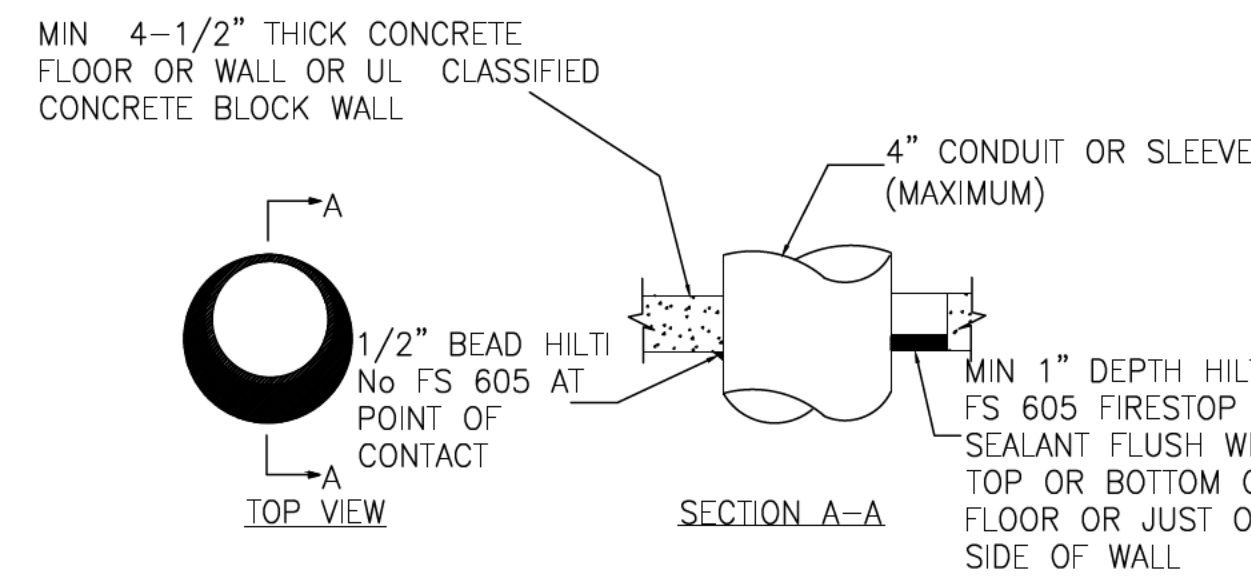
- NOTES:
- USE HEX NUT COMBINATION FOR VERTICAL FIELD ADJUSTMENT, USE CLAMPS FOR HORIZONTAL FIELD ADJUSTMENT
 - PROVIDE SUPPORTS AT A 10' MAXIMUM SEPARATION

5 CONDUIT SUPPORT DETAIL
N.T.S.



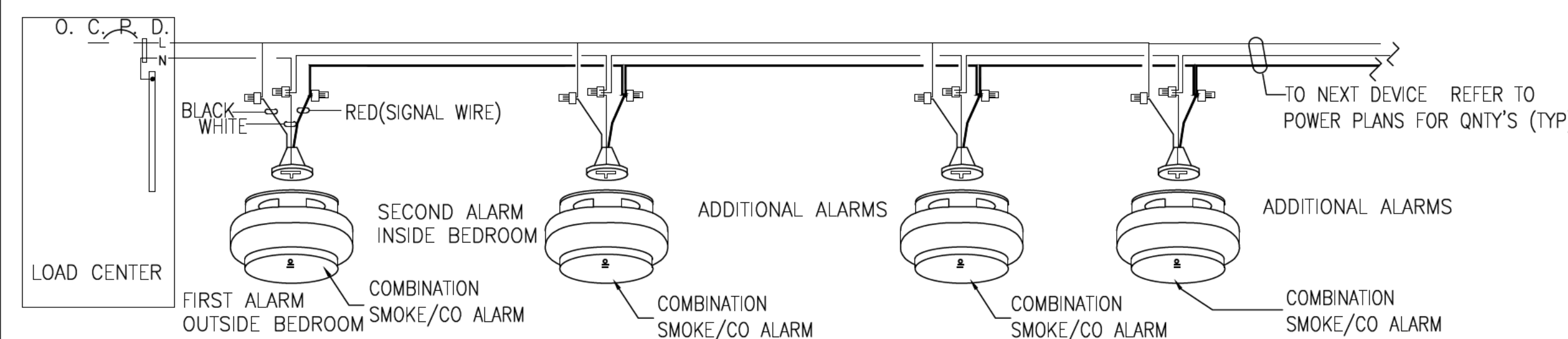
- NOTES:
- WHERE CONDUIT PASS THRU FOUNDATION WALLS, OR FLOOR SLABS USE PIPE SLEEVES

6 CONDUIT PENETRATION THROUGH INTERIOR WALL/FLOOR/CEILING/FIRE RATED WALL
N.T.S.

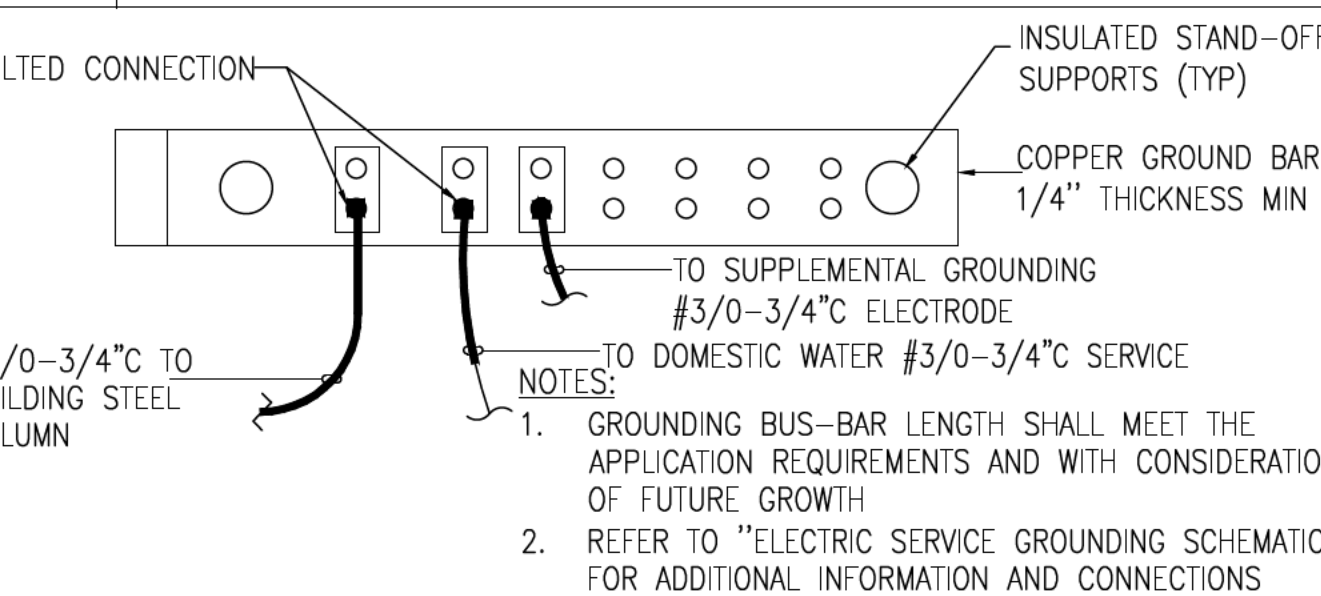


- NOTES:
- CONDUIT MAY BE CENTERED OR OFFSET IN HOLE. MAXIMUM DIAMETER OF HOLE OPENING IS 14 INCHES
 - TEMPORARY FORMS MAY BE REQUIRED TO SUPPORT THE FIRE STOP SEALANT WHILE IT CURES
 - FOR CONDUIT SLEEVE INSTALLATIONS PROVIDE AROUND CONDUCTORS WITHIN SLEEVE

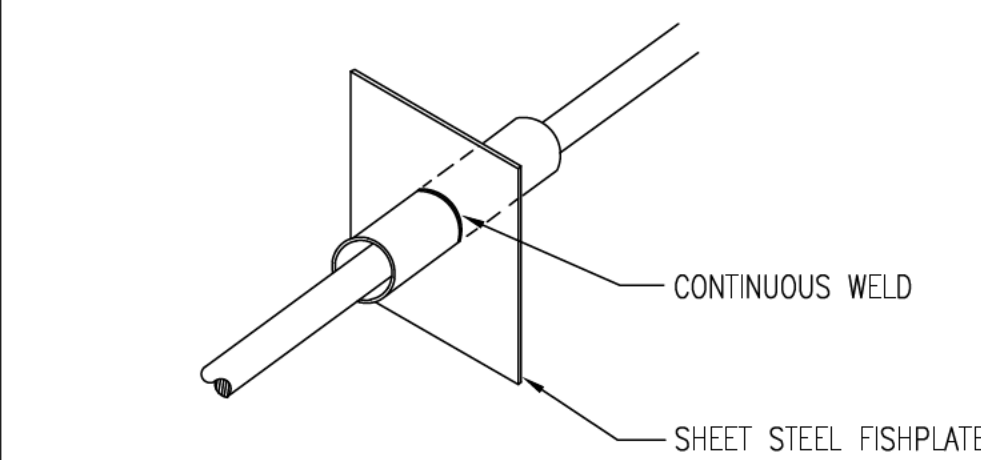
7 DETAIL OF CONDUIT THROUGH CONCRETE FLOOR/WALL OR BLOCK WALL
N.T.S.



8 DWELLING UNIT COMBINATION SMOKE CARBON MONOXIDE ALARM WIRING DETAIL
N.T.S.

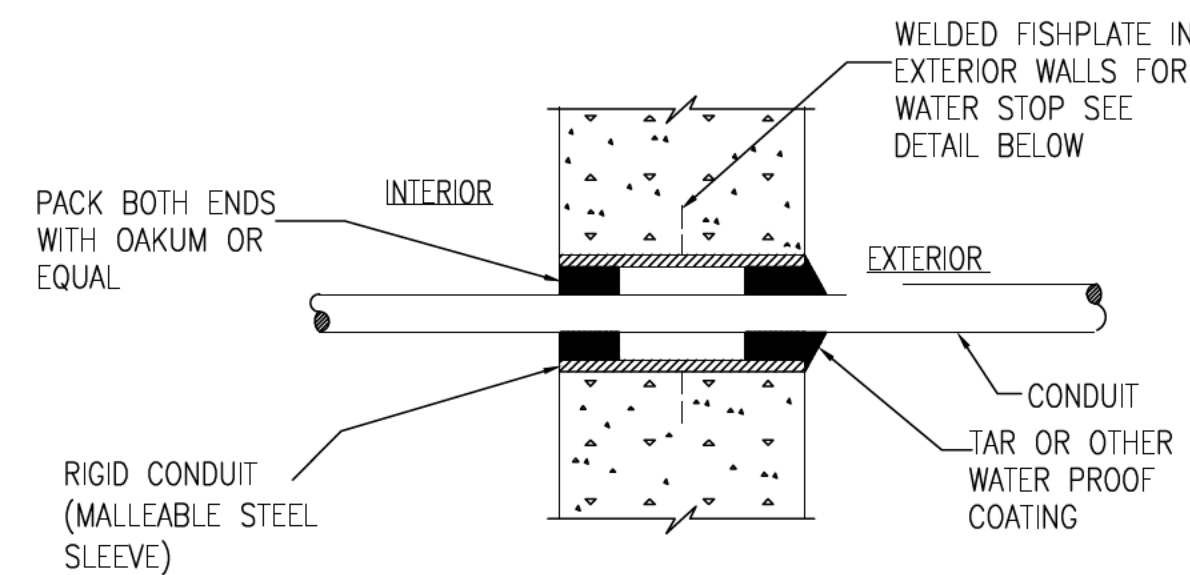


9 MAIN GROUNDING BUS-BAR DETAIL (MGB) (MAIN ELECTRICAL ROOM)
N.T.S.

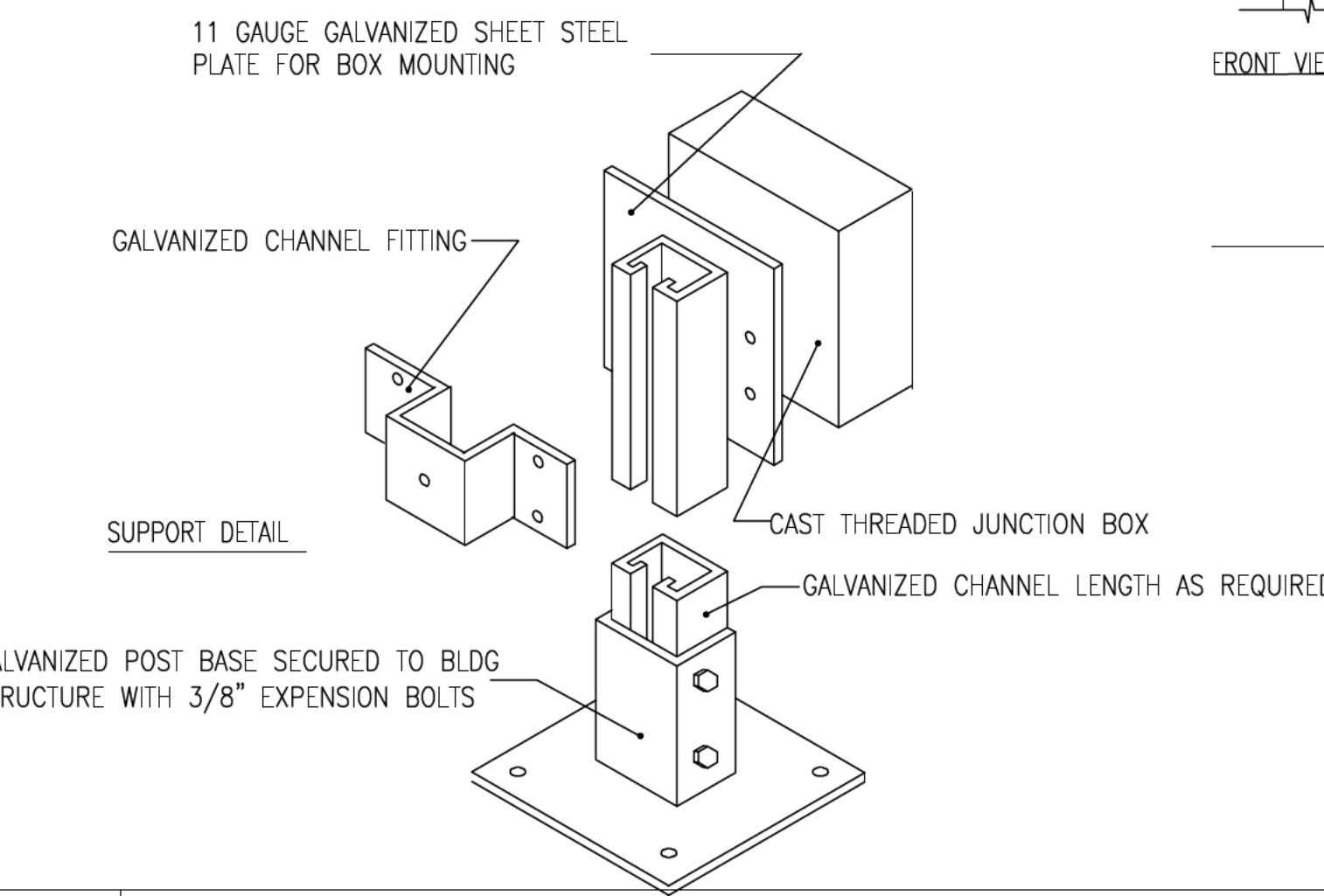


NOTE:
DETAIL IS APPLICABLE TO INTERIOR FLOOR/WALL PENETRATIONS WITHOUT FISHPLATE, HOWEVER APPROVED FIRESTOP COMPOUND IS TO BE UTILIZED IN LIEU OF OAKUM

10 WATER STOP DETAIL
N.T.S.



11 CONDUIT PENETRATION THROUGH EXTERIOR FIRE RATED WALL WALL SECTION
N.T.S.



12 DISCONNECT SWITCH INSTALLATION FOR ROOF MOUNTED EQUIPMENT
N.T.S.

NOTE: ABOVE DETAILS ARE PROVIDED FOR REFERENCE AND USE AS APPLICABLE.

NO.	DATE	DESCRIPTIONS	REVISIONS
00	11/23/2020	INITIAL DESIGN	

TYPICAL DETAILS

SITE ADDRESS:
1253 Atkins Rd,
Fuquay-Varina, NC 27526

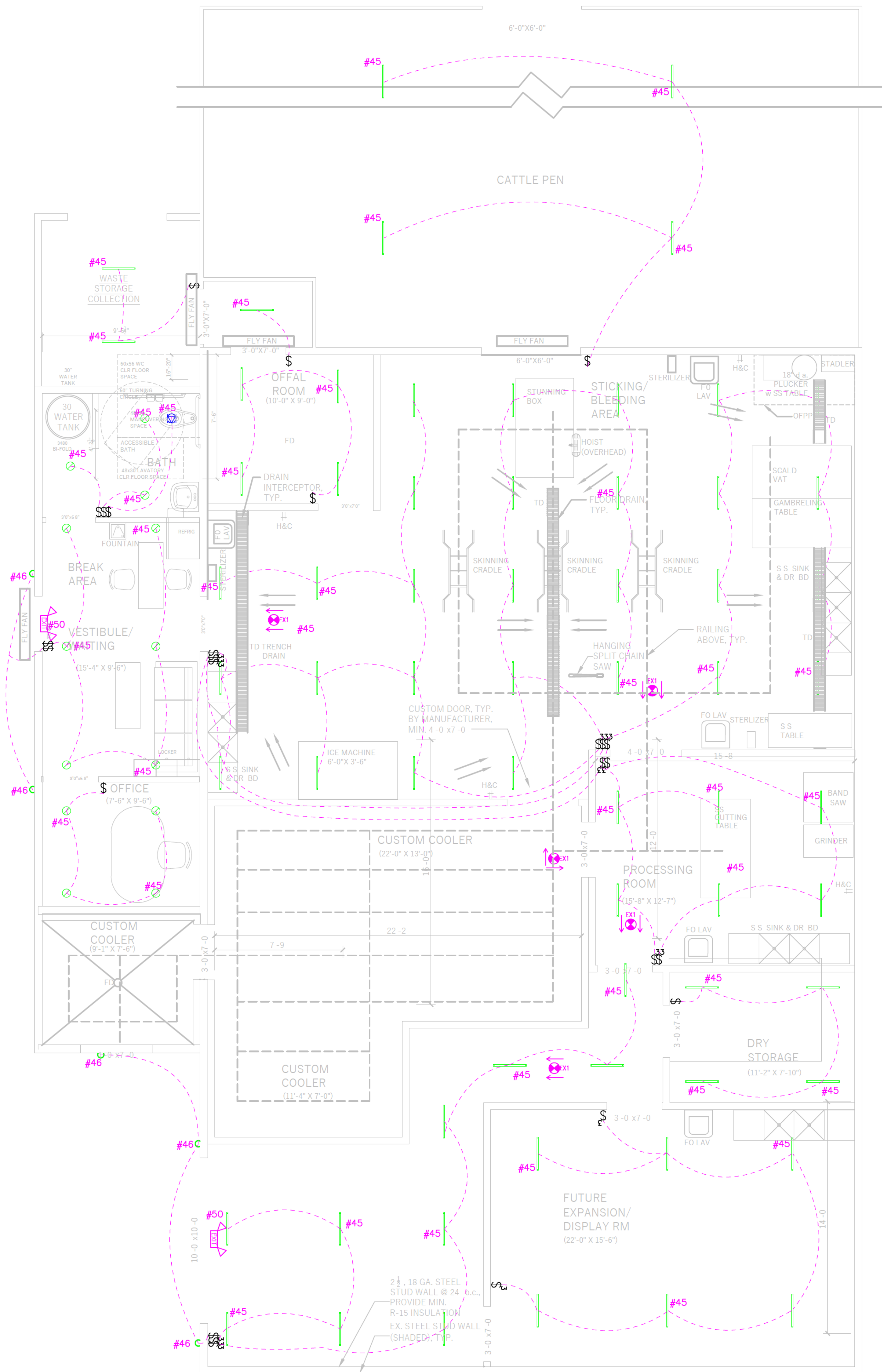


EQUAGEN
engineering by ingenuity

FIRM LIC. # 1869

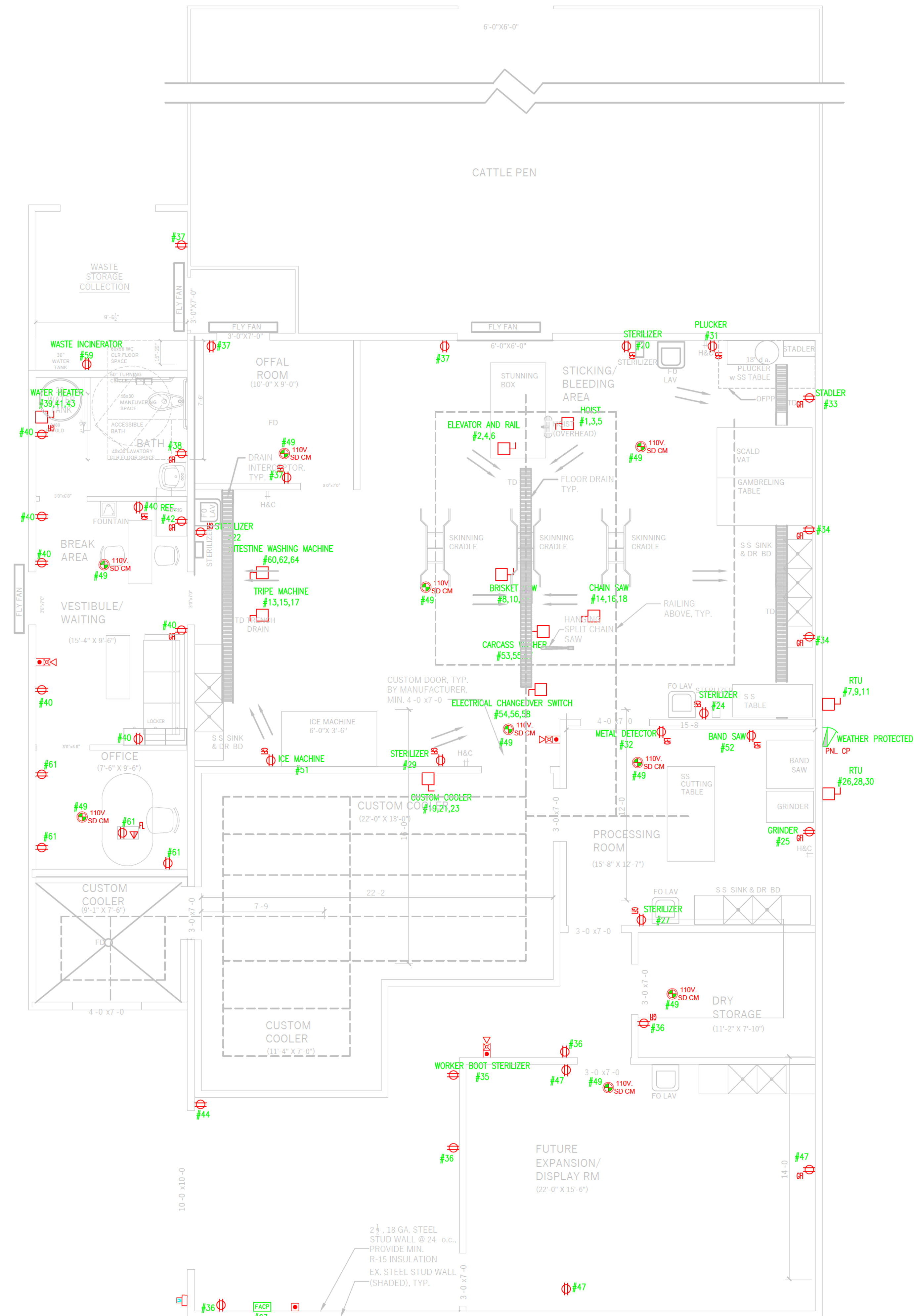
121 EDINBURGH SOUTH DRIVE, SUITE 103
CARY, NC 27511
PHONE: 919.444.5442
EMAIL: MOTI.KC@EQUAGEN.COM

DRAWN BY:	SMB
CHECKED BY:	MKC
DATE:	11-23-2020
SCALE:	AS SHOWN
E003	20-1035



FLOOR LIGHTING PLAN

SCALE: 1/4" = 1'-0"



FLOOR POWER PLAN

SCALE: 1/4" = 1'-0"

NO.	DATE	DESCRIPTIONS	REVISIONS
00	11/23/2020	INITIAL DESIGN	

ELECTRICAL PLAN

SITE ADDRESS:
1253 Atkins Rd,
Fuquay-Varina, NC 27526



EQUAGEN
engineering by ingenuity

FIRM LIC. # 1869

121 EDINBURGH SOUTH DRIVE, SUITE 103
CARY, NC 27511
PHONE: 919.444.5442
EMAIL: MOTI.KC@EQUAGEN.COM

DRAWN BY:	SMB
CHECKED BY:	MKC
DATE:	11-23-2020
SCALE:	AS SHOWN

E100 20-1035