

VICINITY MAP  
NTS

**TURF NOTES:**

- CHISEL COMPACTED AREAS AND SPREAD TOPSOIL 3 INCHES DEEP OVER ADVERSE SOIL CONDITIONS, IF AVAILABLE.
- RIP ENTIRE AREA TO 6 INCHES IN DEPTH.
- REMOVE ALL LOOSE ROCK, ROOTS, AND OTHER OBSTRUCTIONS LEAVING SURFACE REASONABLY SMOOTH AND UNIFORM.
- APPLY AGRICULTURAL LIME, FERTILIZER, AND SUPERPHOSPHATE UNIFORMLY AND MIX WITH SOIL (SEE BELOW).
- CONTINUE TILLAGE UNTIL A WELL-PULVERIZED, FIRM, REASONABLY UNIFORM SEEDBED IS PREPARED 4 TO 5 INCHES DEEP.
- SEED ON A FRESHLY PREPARED SEEDBED AND COVER SEED LIGHTLY WITH SEEDING EQUIPMENT OR CULTIPACK AFTER SEEDING.
- MULCH IMMEDIATELY AFTER SEEDING AND ANCHOR MULCH.
- INSPECT ALL SEEDING AREAS AND MAKE NECESSARY REPAIRS OR RESEEDINGS WITHIN THE PLANTING SEASON, IF POSSIBLE. IF STAND SHOULD BE OVER 80% DAMAGED, RE-ESTABLISH FOLLOWING ORIGINAL LIME, FERTILIZER AND SEEDING RATES.
- CONSULT CONSERVATION INSPECTOR ON MAINTENANCE TREATMENT AND FERTILIZATION AFTER PERMANENT COVER IS ESTABLISHED.

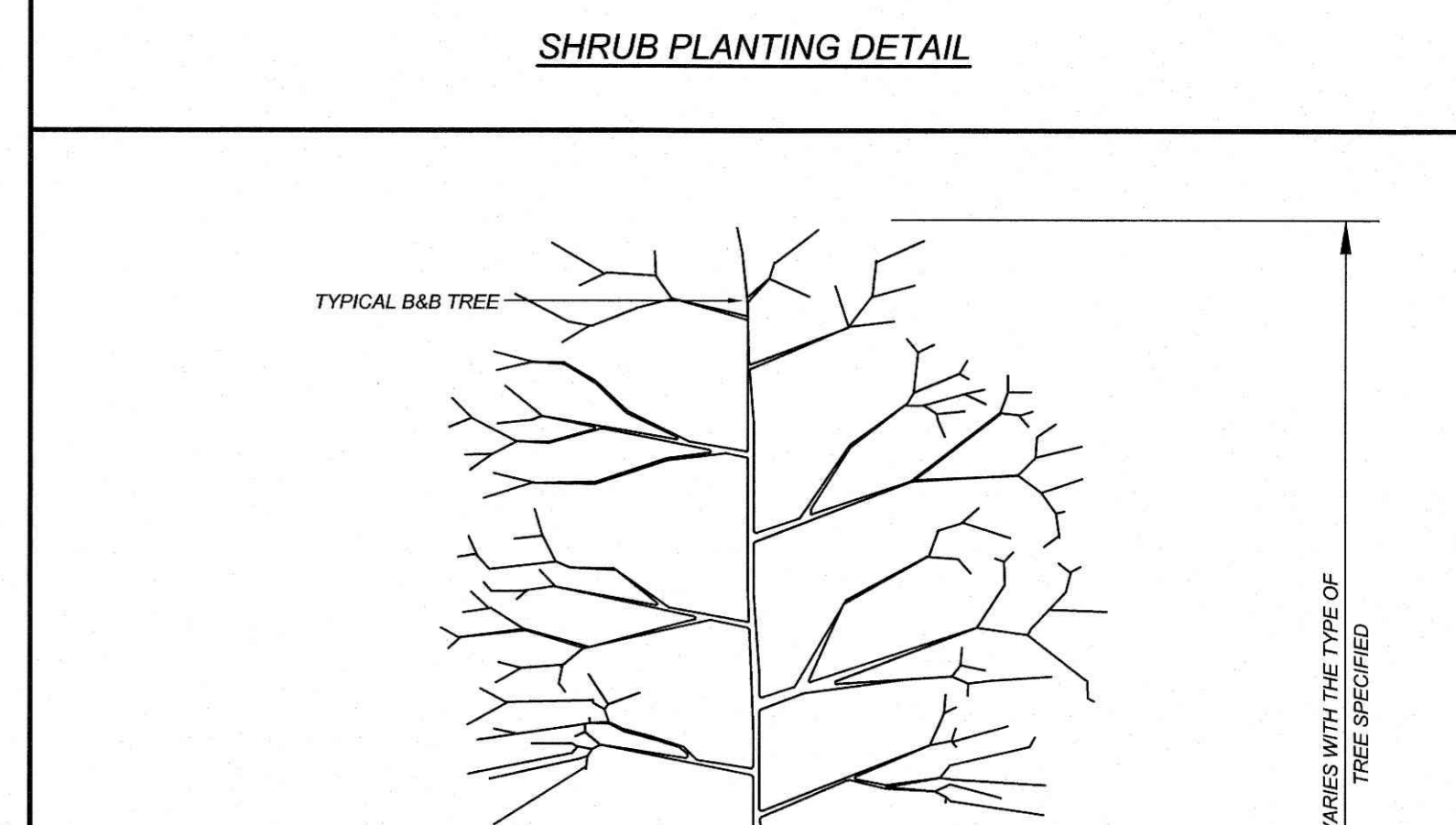
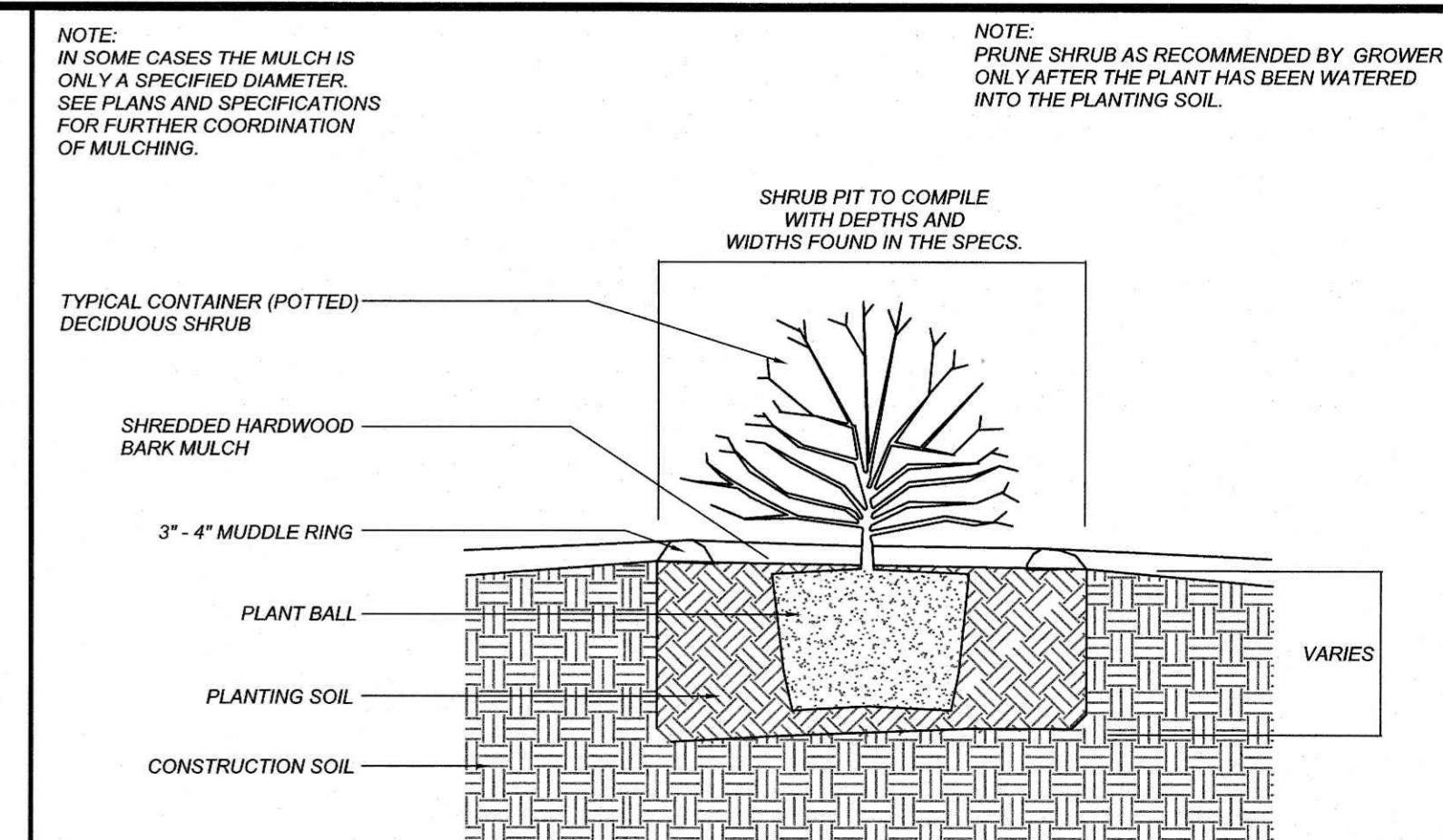
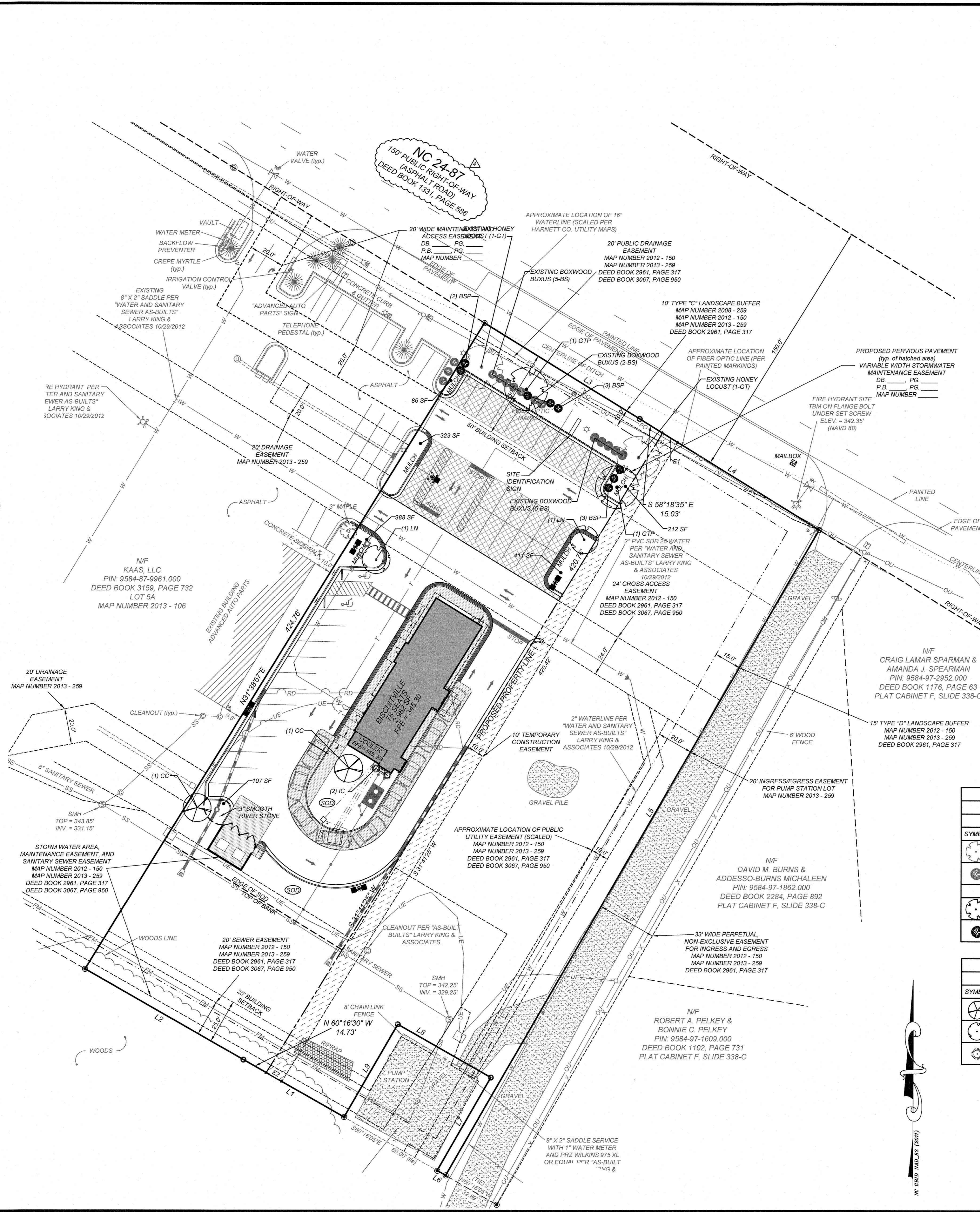
\*APPLY: AGRICULTURAL LIMESTONE - 2 TONS/ACRE (3 TONS/ACRE IN CLAY SOILS)  
FERTILIZER - 1,000 LBS/ACRE - 10-10-10  
SUPERPHOSPHATE - 500 LBS/ACRE 20% ANALYSIS  
MULCH - 2 TONS/ACRE - SMALL GRAIN STRAW  
ANCHOR - ASPHALT EMULSION @ 300 GALS/ACRE

SOD PREPARATION:  
FOLLOW PREPARATION AS DIRECTED FOR STEPS 1-5 ABOVE. IMMEDIATELY WATER SOD UPON INSTALLATION AND CONTINUE UNTIL ROOTS ARE ESTABLISHED.

- CONTRACTOR SHALL WATER AND MAINTAIN ALL LAWN AREAS UNTIL AN ACCEPTABLE STAND OF GRASS HAS BEEN ESTABLISHED.
- ONCE AN ACCEPTABLE STAND OF GRASS HAS BEEN ESTABLISHED, THE CONTRACTOR SHALL REPAIR ALL DAMAGED AREAS AND MONITOR THE LAWN AREAS UNTIL THE GRASS REACHES A HEIGHT OF 4 INCHES TALL.
- AT THE TIME THE GRASS REACHES A HEIGHT OF 4 INCHES TALL, THE CONTRACTOR SHALL MOW THE GRASS TO THE HEIGHT OF 3 INCHES AND TURN OVER THE LAWN MAINTENANCE TO THE OWNER.
- AN ACCEPTABLE STAND OF GRASS SHALL BE 92% COVERAGE OR BETTER.

**LANDSCAPE NOTES:**

- THE GENERAL CONTRACTOR SHALL LEAVE THIS SITE AT FINISHED GRADE. THE LANDSCAPE CONTRACTOR SHALL REVISE GRADES AT A MINIMUM TO ENSURE SMOOTH TRANSITIONS BETWEEN PLANTING BEDS AND LAWN AREAS.
- PLANT GUARANTEE: ALL PLANTS SHALL BE GUARANTEED TO LIVE FOR TWELVE MONTHS. THE GUARANTEE SHALL COMMENCE UPON FINAL ACCEPTANCE OF THE PROJECT. IF ANY PLANTS ARE DEAD OR IN AN UNHEALTHY CONDITION BEFORE FINAL ACCEPTANCE, THE LANDSCAPE CONTRACTOR SHALL REPLACE THEM AT HIS EXPENSE. THIS REPLACEMENT SHALL NOT BE CONSIDERED A GUARANTEED REPLACEMENT.
- ALL PLANTING SHALL BE PLACED WITHIN A MULCHED PLANTING BED. ALL STRAPPING AND THE TOP 2/3 OF WIRE BASKETS MUST BE CUT AWAY AND REMOVED FROM ROOT BALLS PRIOR TO BACKFILLING PLANTING PIT. REMOVE TOP 1/3 OF BURLAP FROM ROOT BALL.
- ALL LANDSCAPE WORK SHALL BE IN ACCORDANCE WITH CURRENT CITY STANDARD DETAILS AND SPECIFICATIONS.
- ALL AREAS NOT MULCHED SHALL BE SEEDED OR SODDED IN ACCORDANCE WITH THE AREA SPECIFIED ON PLANS WITH "REBEL" HYBRID TALL FESCUE OR EQUIVALENT AS PRESCRIBED IN THE SEEDING SCHEDULE AS SHOWN ON THIS SHEET.
- SITE LIGHTING SHALL NOT BE PLACED IN CONFLICT WITH PLANTED TREES.
- TREE PROTECTION FENCING TO BE PROVIDED AROUND TREE PRESERVATION AREAS IN ACCORDANCE WITH CITY STANDARDS.
- COORDINATE ALL WORK WITH SITE LAYOUT AND SITE GRADING, DRAINAGE & UTILITIES PLAN.
- VERIFY LOCATION OF UTILITIES BEFORE PLANTING.
- MULCH ALL AREAS, THAT ARE NOT SEEDED OR SODDED, WITH SHREDDED HARDWOOD MULCH TO A DEPTH OF 3"-4".
- THE SELECTION AND INSTALLATION OF PLANTS AND PLANTING METHODS SHALL CONFORM WITH THE STANDARDS OF THE AMERICAN ASSOCIATION OF NURSERYMEN OR THE CITY STANDARD DETAILS AND SPECIFICATIONS, WHICHEVER IS STRICTER.
- CONTRACTOR IS RESPONSIBLE FOR VERIFYING ALL QUANTITIES. DRAWINGS SHALL RULE OVER PLANT LISTS.
- SUBSTITUTIONS SHALL BE SUBMITTED TO LANDSCAPE ARCHITECT FOR APPROVAL, PRIOR TO INSTALLATION. SUBSTITUTIONS MAY REQUIRE ADDITIONAL APPROVAL BY THE GOVERNING JURISDICTION.
- ALL LANDSCAPING SOIL AND FILL SHALL BE FREE FROM WEEDS, REFUSE, AND DEBRIS AT ALL TIMES.
- TREES AND LARGE SHRUBS SHALL BE ADEQUATELY SUPPORTED, AS NECESSARY, USING STAKES AND GUYS. SUCH SUPPORTS SHALL BE DESIGNED SO AS TO PROTECT TREES AND SHRUBS FROM INJURY. TREES AND SHRUBS SHALL BE FASTENED TO THE SUPPORT WITH AN ACCEPTABLE COMMERCIAL TREE TIE OF PLASTIC OR HOSE COVERED WIRE.
- THE MAXIMUM GROWTH HEIGHT OF ANY LANDSCAPING WITHIN THE SIGHT TRIANGLE SHALL BE THREE (3) FEET IN HEIGHT.



**PLANTING SCHEDULE (SEE LANDSCAPING NOTE #12)**

PERIMETER SCREENING (TYPE "C" BUFFER) BETWEEN PARKING AREA AND RIGHT OF WAY

EXISTING PLANTING MATERIAL								
SYMBOL	KEY	NO.	BOTANICAL NAME	COMMON NAME	CALIPER	HEIGHT	ROOT	COMMENTS
GT	2		GLEDITSIA TRIACANTHOS	THORNLESS HONEY LOCUST	N/A	N/A	N/A	N/A
BS	12		BUXUS SEMPERVIRENS	COMMON BOXWOOD	N/A	N/A	N/A	N/A

PROPOSED PLANTING MATERIAL								
SYMBOL	KEY	NO.	BOTANICAL NAME	COMMON NAME	CALIPER	HEIGHT	ROOT	COMMENTS
GTP	2		GLEDITSIA TRIACANTHOS	THORNLESS HONEY LOCUST	2"	6'	B & B	MATCH SIZE & BRANCHING
BSP	8		BUXUS SEMPERVIRENS	COMMON BOXWOOD	-	24"	3 GAL	MATCH SIZING

**PLANTING SCHEDULE (SEE LANDSCAPING NOTE #12)**

INTERIOR LANDSCAPING

SYMBOL	KEY	NO.	BOTANICAL NAME	COMMON NAME	CALIPER	HEIGHT	ROOT	COMMENTS
CC	2		CERCIS CNADENSIS	EASTERN REDBUD	2"	6'	B & B	MATCH SIZE & BRANCHING
LN	2		LAGERSTROEMIA NATCHEZ	CREPE MYRTLE	-	6'	B & B	MATCH SIZE & BRANCHING
IC	2		ILEX CORNUTA 'BURFOODI NANA'	DWARF BUFFORD HOLLY	-	24"	CONT. 3 GAL. MIN.	MATCH SIZING

PERIMETER SCREENING REQUIREMENT BETWEEN PARKING AND PUBLIC R.O.W.  
 • TYPE C BUFFER = 5 LOW GROWING SHRUBS FOR EVERY REQUIRED LARGE MATURE TREE  
 • MATURE TREE REQUIREMENT = 1 MATURE TREE AT NO MORE THAN 30' OF SEPARATION

PROPOSED  
 15 EXISTING BOXWOODS  
 5 PROPOSED BOXWOODS  
 8 EXISTING HONEY LOCUST  
 5 PROPOSED HONEY LOCUST

GRAPHIC SCALE  
 1 inch = 30 ft.

Professional Engineer Seal: NORTH CAROLINA PROFESSIONAL ENGINEER, P-0266, 11887, 11/12/2018

**REVISIONS**

NO.	DATE	DESCRIPTION
1	10-18-2018	COUNTY & DEMUR COMMENTS
2	11-19-2018	COUNTY COMMENTS
3	12-03-2018	HCDPU COMMENTS
4	12-11-2018	REVISE ROAD NAME

**COMMERCIAL SITE DESIGN**

8972 CREEDMOOR ROAD  
 RALEIGH, NORTH CAROLINA 27613

(919) 848-0121 FAX: (919) 848-2741  
 WWW.CSITDESIGN.COM

CLIENT:  
 BISCUITVILLE, INC.  
 1414 YANCEYVILLE ST.  
 GREENSBORO, NC 27605  
 PHONE: (819) 740-7401  
 EMAIL: hquene@biscuitville.com

**Biscuitville**  
 FRESH SOUTHERN

1608 NC 24-87  
 CAMERON, NORTH CAROLINA 28326

**LANDSCAPE PLAN**

PROJECT NO: BIS-1803  
 FILENAME: BIS1803-LS  
 DRAWN BY: DDH  
 SCALE: 1" = 30'  
 DATE: 07-23-18  
 SHEET NO: L-1

X:\BIS - Biscuitville\1803 - Cameron, NC @ (Spout Springs) 1608 NC 24-87\CAD\BIS1803-LS.dwg, 12/11/2018 8:00:03 AM, chris