

Revisions	
REVISION DATE	

PROJECT DATE 7.17.18
Drawn By TA
Checked By GRL
Sheet No. A202

EXTERIOR FINISH SCHEDULE

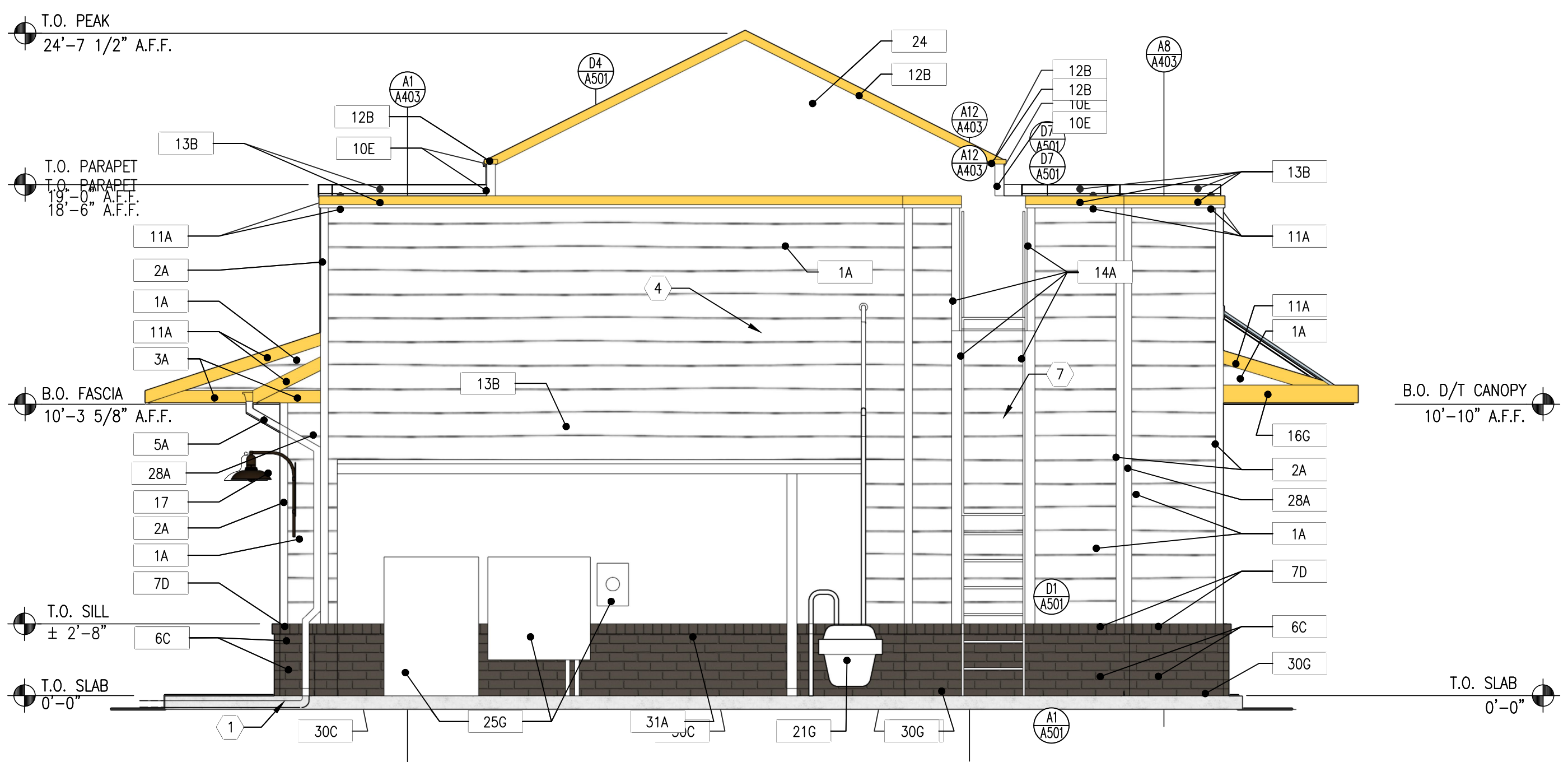
- COLOR
- A - SHERWIN WILLIAMS - SW 7005 - PURE WHITE - MATTE ENAMEL
 - B - SHERWIN WILLIAMS - SW 6684 - BRITTLE BRUSH - SATIN ENAMEL
 - C - BORGONDRIGERSTONE 14850NMPFRUBBERPAINTCSM0R2BLKCKHUEGX
 - D - BORGONDRIGERSTONE 14850NMPFRUBBERPAINTCSM0R2BLKCKHUEGX
 - E - KYNAR 500 - SLATE GRAY
 - F - SHERWIN WILLIAMS - SW MATCH TO KYNAR 500 SLATE GRAY - MATTE ENAMEL
 - G - SHERWIN WILLIAMS - SW 7020 - BLACK FOX - MATTE ENAMEL
 - H - "KAWNEER" CLASSIC BRONZE

CONSTRUCTION NOTES

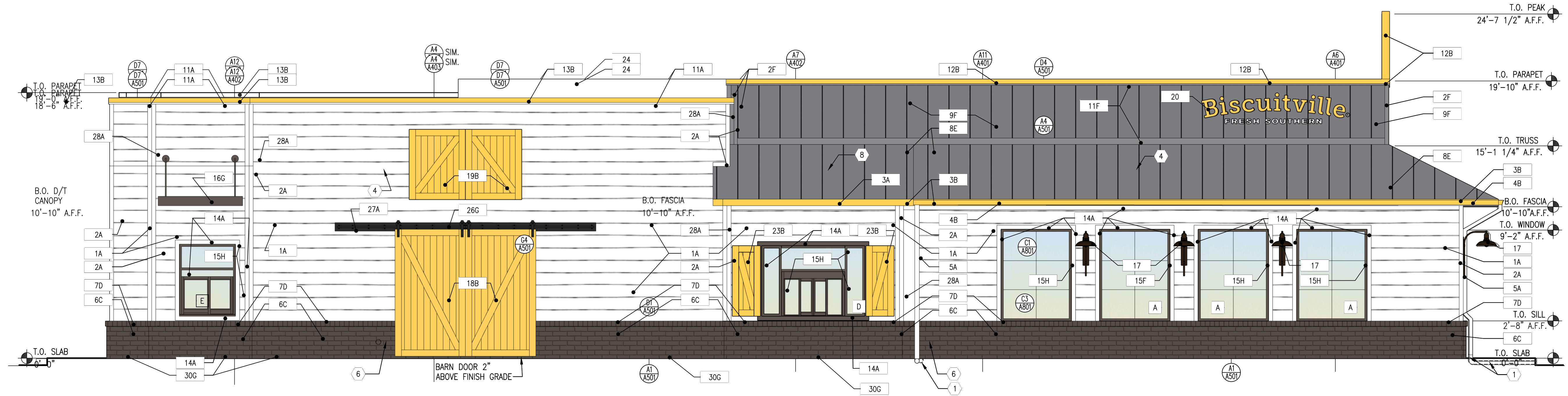
- 1 GC TO PROVIDE 3"x4" DOWNSPOUT ADAPTER PIPE THEN OUT TO FACE OF CURB
- 2 CO2 FILL BOX - COORDINATE W/CO2 SUPPLIER
- 3 GREASE SUCTION BOX - COORDINATE W/GREASE CONTAINMENT TANK CUT SHEETS
- 4 ROOF DECK LINE SHOWN HIDDEN
- 5 NOT USED.
- 6 ROOF OVERFLOW DRAIN OUT THRU WALL @ 12" A.F.F. W/ DECORATIVE "TONGUE" - SEAL AS REQ'D.
- 7 ROOF LADDER SEE C11/A501 FOR MORE INFORMATION.
- 8 METAL ROOF RAIN DIVERTER.
- 9 ICE CLEATS TO BE INSTALLED ON ALL SLOPED METAL ROOFING. MFR: ZALESKI MODEL #15 / CLEAR SNOW GUARDS ATTACHED W/ADHESIVE - NO SCREWS

GENERAL NOTES

1. EXTERIOR SIGNAGE REQUIREMENTS MAY BE LIMITED OR OTHERWISE DICTATED BY LOCAL ORDINANCES. SIGNAGE CONTRACTOR SHALL HANDLE ALL PERMIT SUBMITTALS & PROCUREMENT & SHALL MODIFY SIGNAGE PACKAGE ACCORDINGLY.
- EXTERIOR FINISH SCHEDULE**
- MATERIAL
- 1 - HORIZONTAL HARDIE LAP SIDING - 10 3/4" EXPOSURE
 - 2 - HARDIE BOARD 1x4 OUTSIDE CORNER BOARD
 - 3 - HARDIE FASCIA BOARD 1x6
 - 4 - 4"x4" ALUMINUM GUTTERS
 - 5 - ALUMINUM DOWNSPOUT 3"x4"
 - 6 - ALUMINUM WAINSCOT. SEE DET. F1/A501
 - 7 - ALUMINUM WAINSCOT SILL
 - 8 - STANDING SEAM METAL ROOF - SEE FINISH SCHEDULE A103 FOR MORE PRODUCT INFORMATION
 - 9 - VERTICAL BRANDING FRAME (HARDIE BOARD (SMOOTH)) WITH 1x2 VERT. BATTEN BOARDS @ 24" O.C. - (ALIGN WITH VERT. JOINTS) SEE SECTIONS ON SHTS. A101 & A102 FOR MORE INFORMATION.
 - 11 - HARDIE BOARD 1x6 TRIM
 - 12 - STANDING SEAM METAL ROOF CORNER FLASHING
 - 13 - ALUMINUM CORING CAP - SEE DETAIL D4/A501
 - 14 - HARDIE TRIM BOARD 1x4
 - 15 - ALUMINUM EDGE FLASHING - SEE DETAIL D4/A501
 - 16 - ALUMINUM CORING CAP - SEE DETAIL D4/A501
 - 17 - ALUMINUM DOWNSPOUT WINDOWS "KAWNEER"
 - 18 - HARDIE TRIM BOARD 1x4
 - 19 - ALUMINUM DOWNSPOUT CANOPY - SEE EXTERIOR FINISH SCHEDULE FOR MORE INFORMATION
 - 20 - PREMANUFACTURED METAL CANOPY (SEE ELECTRICAL DRAWINGS FOR SIZE - SEE DETAILS FOR MORE INFORMATION)
 - 21 - PREMANUFACTURED ALUMINUM BARN DOORS 5'x9' - SEE DETAIL D4/A501 FOR MORE INFORMATION
 - 22 - PREMANUFACTURED ALUMINUM BARN DOORS 5'x9' - SEE DETAIL D4/A501 FOR MORE INFORMATION
 - 23 - EXTERIOR SIGN UNDER SEPARATE PERMIT - SEE ELECTRICAL DRAWINGS FOR ELECTRICAL CIRCUIT INFORMATION
 - 24 - PAINTED HOLLOW METAL DOOR & FRAME
 - 25 - GAS METER & PIPING - SEE PLUMBING DRAWINGS
 - 26 - PAINTED HOLLOW METAL FRAME
 - 27 - PREMANUFACTURED ALUMINUM SHUTTERS 2'x5' SEE DETAIL D4/A501 FOR MORE INFORMATION
 - 28 - PREMANUFACTURED ALUMINUM SHUTTERS 2'x5' SEE DETAIL D4/A501 FOR MORE INFORMATION
 - 29 - SINGLE PLY ROOF MEMBRANE ON PARAPET BEYOND SEE ROOF PLAN SHT. A104
 - 30 - NON OPERATIONAL BARN DOOR HARDWARE - SEE DETAIL D4/A501 FOR MORE INFORMATION
 - 31 - DOUBLE PRESSURE BRASS TUBULAR HARDWARE HANGES 40# FOR BACKLASH SPRING INFORMATION
 - 32 - HARDIE BRASSLINE TRIPLE DORNER BOARD DETAIL G4/A501 FOR METAL INFORMATION
 - 33 - METAL INFORMATION LADDER
 - 34 - HARDIE BOARD FROM INSIDE CORNER BOARD WAINSCOT PAINT
 - 35 - METAL TO BRASS BRASS WAINSCOT.
 - 36 - EXPOSED EXTERIOR CORNER BRASS WAINSCOT PAINT
 - 37 - 80 LBS. SPIN COLORED
 - 38 - VINYL WINDOW.



E1 EXTERIOR ELEVATION - REAR
SCALE: 1/4" = 1'-0"



A1 EXTERIOR ELEVATION - LEFT SIDE
SCALE: 1/4" = 1'-0"