

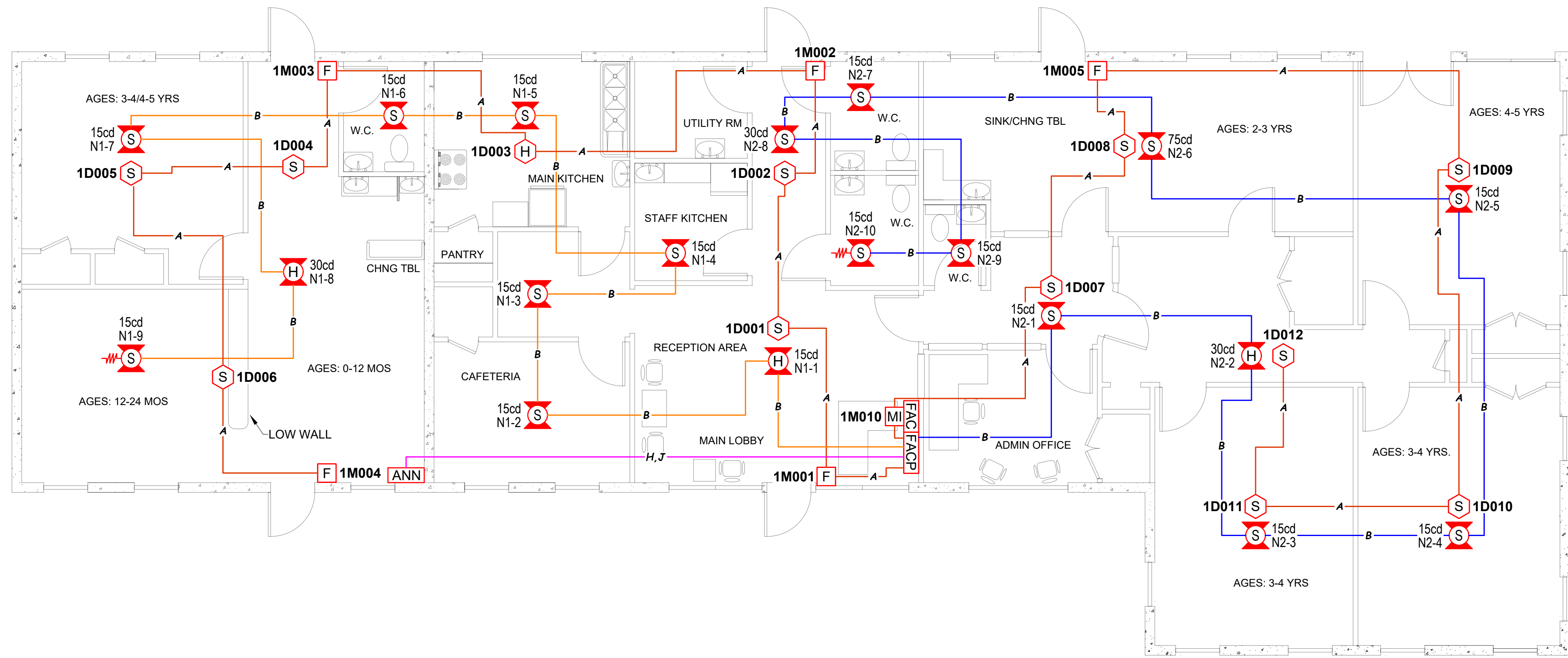
DEVICE LEGEND				
SYMBOL	DEVICE	PART NUMBER	BACK BOX	QTY.
	FIRE ALARM CONTROL PANEL W/DAC&T & BATTERIES	NFW2-100	N/A	1
	LCD REMOTE ANNUNCIATOR	FDU-80	(3) SINGLE GANG, 2-1/2" DEEP	1
	FIRE ALARM CELLULAR COMMUNICATOR	SLE-CDMA-FIRE	N/A	1
	PHOTOELECTRIC SMOKE SENSOR	NP-100	4" OCTAGON, 1-1/2" DEEP	11
	135F THERMAL HEAT SENSOR W/RATE OF RISE	NH-100R	4" OCTAGON, 1-1/2" DEEP	1
	MANUAL PULL STATION	NOT-BG12LX	SINGLE GANG, 1-1/2" DEEP	5
	MINI-MONITOR MODULE	MM-100P	N/A	1
	HORN STROBE, CEILING MOUNT, RED	PC2RL	4" SQUARE, 1-1/2" DEEP	3
	STROBE, CEILING MOUNT, RED	SCRL	4" SQUARE, 1-1/2" DEEP	16
	120VAC PANEL SURGE PROTECTOR	DTK-120HW	N/A	1
	DENOTES END-OF-LINE RESISTOR	N/A	N/A	N/A

### FIRE ALARM NOTES

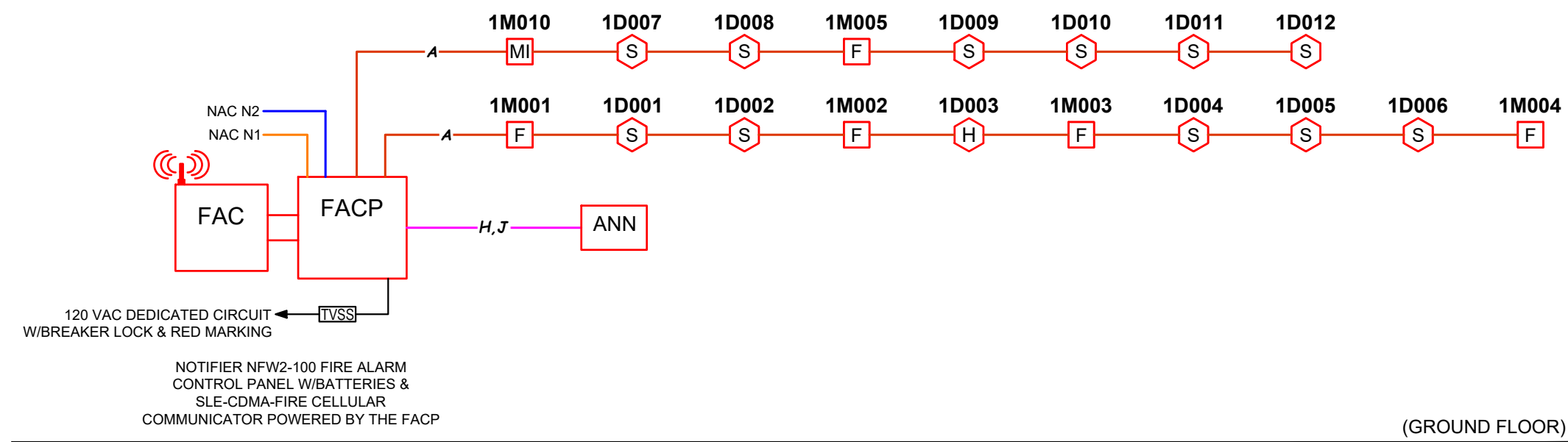
- REFER TO FLOOR PLANS FOR DEVICE TYPE AND LOCATION.
- ALL VISIBLE NOTIFICATION APPLIANCES SHALL BE SYNCHRONIZED PER NFPA 72.
- LABEL ALL DEVICES WITH ADDRESSES.
- LABEL ALL END-OF-LINE DEVICES WITH EOL ON DEVICE.
- ALL CABLE TO BE FREE OF SHORTS, GROUNDS, AND OPENS.
- THE OPERABLE PART OF A MANUAL STATION SHALL BE INSTALLED SO THAT THE PULL LEVER IS BETWEEN 42" AND 48" ABOVE THE FINISHED FLOOR.
- SEE DEVICE MOUNTING HEIGHTS DETAIL FOR ADDITIONAL DEVICE INSTALLATION INFORMATION.
- ALL CIRCUITS TO BE INSTALLED IN CLASS 'B' STYLE.

### WIRE LEGEND

SYMBOL	DESCRIPTION	WIRE TYPE/SIZE	COLOR
A	SIGNALING LINE CIRCUIT	16/2 FPLP TWISTED PAIR, NO SHIELD	RED JACKET, RED (+), BLACK (-)
B	NOTIFICATION APPLIANCE CIRCUIT	14/2 FPLP STRANDED-FREE AIR	RED JACKET, RED (+), BLACK (-) BLUE (+), BLACK (-)
H	REMOTE ANNUNCIATOR CIRCUIT	16/2 FPLP TWISTED PAIR, W/SHIELD	RED JACKET, RED (+), BLACK (-)
J	24 VDC POWER	14/2 FPLP STRANDED	RED JACKET, RED (+), BLACK (-)

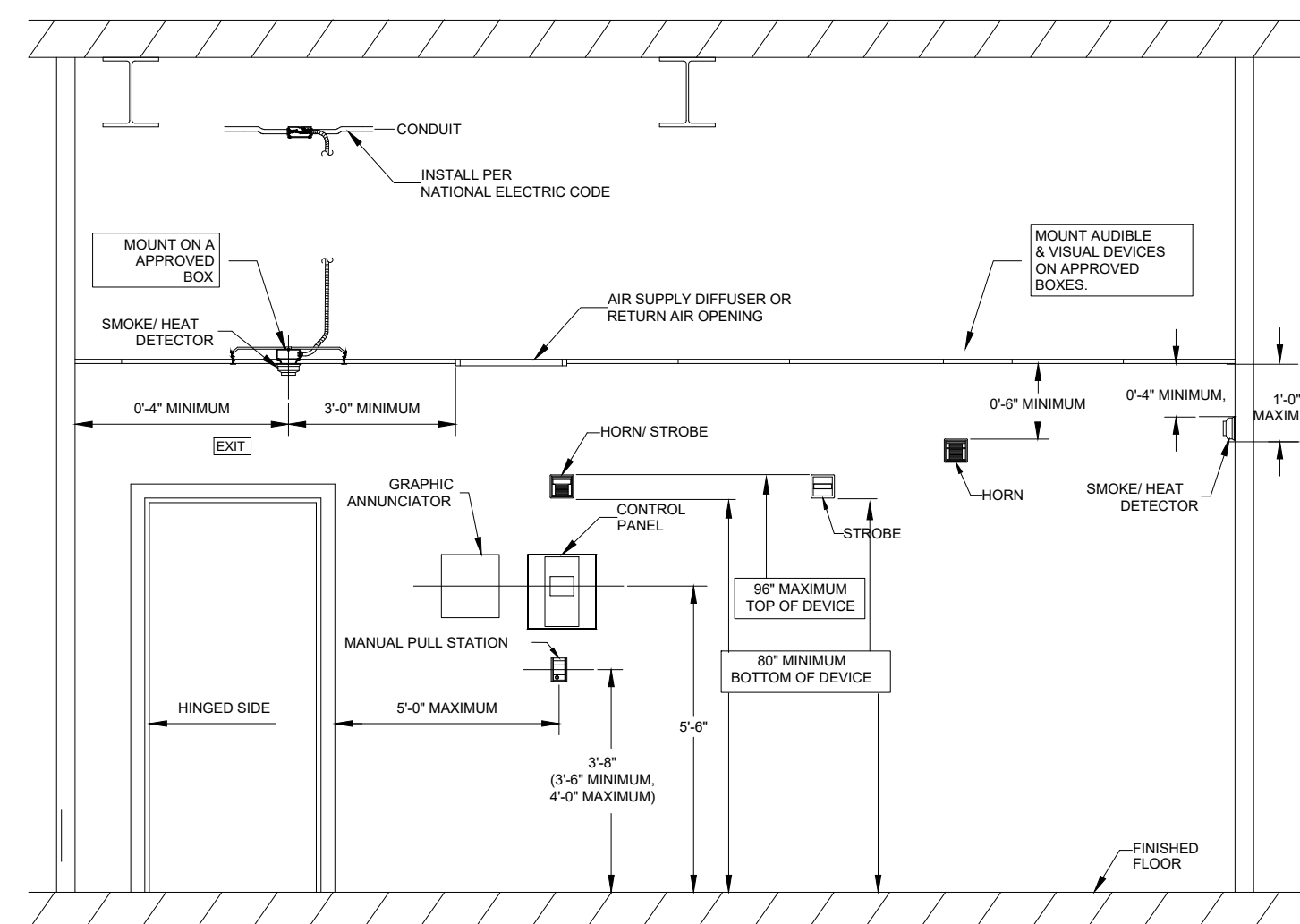


1 FIRE ALARM PLAN  
FA-1 Scale: 3/16"=1'-0"



2 FIRE ALARM RISER  
FA-1 Scale: None

### NFPA 72 & ADA DEVICE INSTALLATION REQUIREMENTS



4 DEVICE MOUNTING HEIGHTS  
FA-1 Scale: None

SYSTEM INPUTS	BUILDING SYSTEM OUTPUTS				CENTRAL COMMUNICATOR			
MANUAL PULL STATION	●	●	●	●	●	●	●	●
SMOKE DETECTOR	●	●	●	●	●	●	●	●
HEAT DETECTOR	●	●	●	●	●	●	●	●
FIRE ALARM AC POWER FAILURE	●	●	●	●	●	●	●	●
FIRE ALARM SYSTEM LOW BATTERY	●	●	●	●	●	●	●	●
OPEN CIRCUIT	●	●	●	●	●	●	●	●
GROUND FAULT	●	●	●	●	●	●	●	●
NOTIFICATION APPLIANCE CIRCUIT SHORT	●	●	●	●	●	●	●	●

3 FIRE ALARM MATRIX  
FA-1 Scale: None

NO.	DATE	REVISION	BY

PATTERSON GROUP  
SERVICES, INC.  
229 CARRIAGE STREET  
SANFORD, NC 27330  
PHONE: 919-776-2403 FAX: 919-776-6091

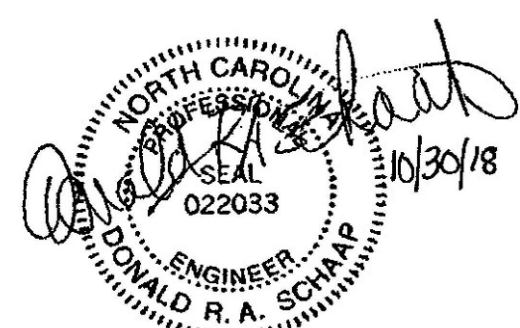


FIRE ALARM SYSTEM FOR:  
**TREE OF KNOWLEDGE  
DAYCARE CENTER**  
622 BUFFALO LAKE ROAD  
SANFORD, NORTH CAROLINA 27332

### FIRE ALARM SYSTEM

- SYMBOL LEGEND
- FIRE ALARM NOTES
- WIRE LEGEND
- FIRE ALARM PLAN
- FIRE ALARM RISER
- FIRE ALARM MATRIX
- MOUNTING HEIGHTS

DATE: 10/30/2018  
DRAWN BY: JRC  
CHECKED BY: GSP  
SCALE: 3/16"=1'-0"



NC LICENSE # 30023-SP-FA/LV

SHEET:  
**FA-1 of 1**