





HM'S KIDS, INC  
 PIN# 9585-62-8794.000  
 MAP # 2-202  
 ZONING: COMM

H. M. CAGLE DRIVE  
 R/W VARIES

NEW MONUMENT SIGN:  
 VERIFY LOCATION WITH  
 USPS

35' STREET YARD

PROPOSED  
 6,000 SQFT  
 POSTAL FACILITY  
 FFE-368.33'

10 SPACES

11 SPACES

9 SPACES

10 SPACES

S59°25'15"E  
 456.23'

10' PARKING SETBACK

S59°25'15"E  
 382.43'

N20°34'45"E  
 281.00'

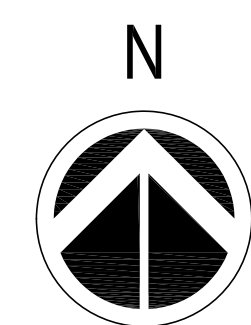
EXISTING  
 CAGLE  
 FURNITURE CO

SITE PLAN NOTES

1. SHADED AREA TO RECEIVE 3" ASPHALT TOP COAT BY OWNERS SUBCONTRACTOR. CONTRACTOR TO INCLUDE MANAGEMENT FEE TO OVERSEE SUBCONTRACTORS WORK.
2. CONTRACTOR TO PROTECT EXISTING ASPHALT BASE AND EXISTING LANDSCAPING DURING CONSTRUCTION. CONTRACTOR WILL REPLACE ANY DAMAGED ASPHALT BASE AND LANDSCAPING AT HIS EXPENSE.

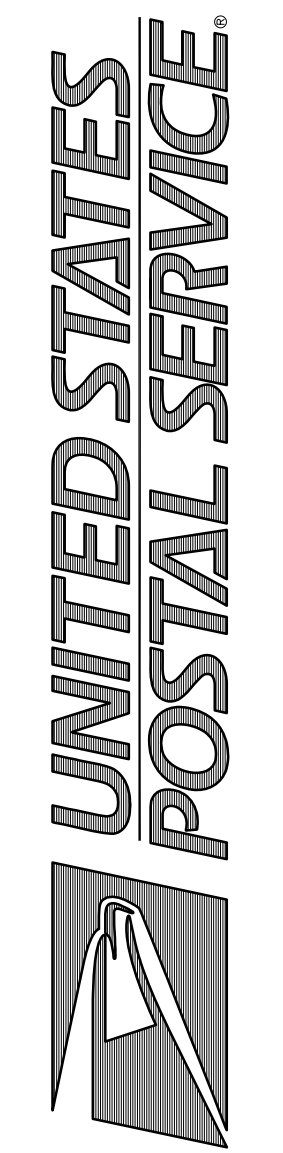
GRAPHIC SCALE

1/16" = 1'-0" 0 8' 16' 32'



The Walker Group Architecture, Inc  
 WALKER  
 ARCHITECTURE  
 P.O. Box 541, New Bern, NC 28563  
 252.636.8778 (PHONE)  
 252.636.8892 (FAX)

INTERIOR UPFIT  
 USPS SPOUT SPRINGS NC CAX  
 XXXXXXXXXX  
 XXXXXXXXXX

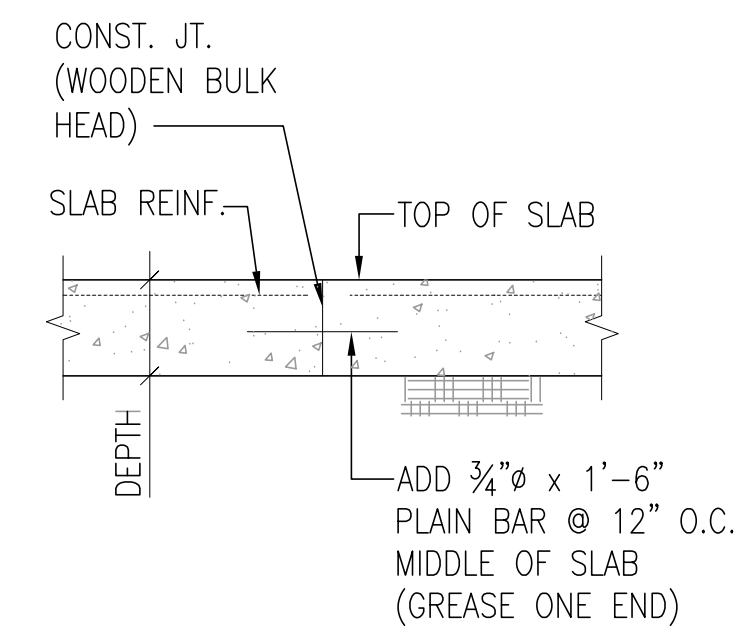


Columbia, MD 21045-0701

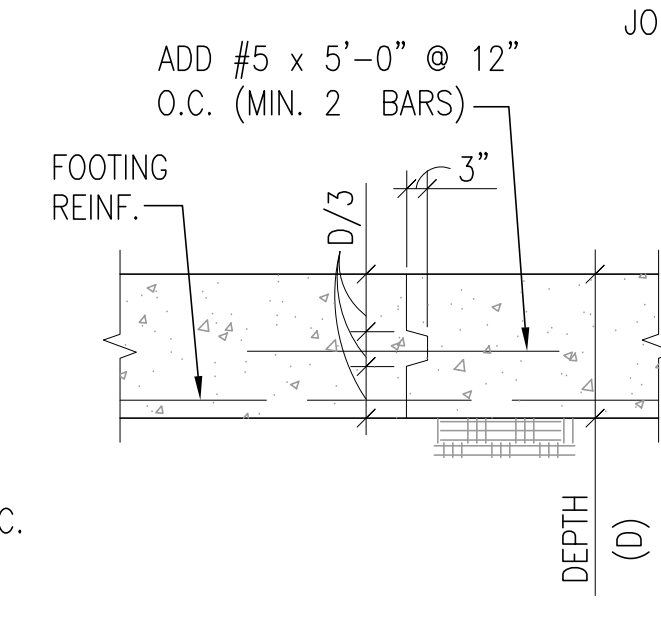
C1.1 Architectural  
 Site Plan  
 Scale: As Indicated Date: 5/17/2018  
 Project: SPOUT SPRINGS INTERIOR UPFIT  
 USPS File Number: XXXXXX  
 USPS Project Number: 097932

© Copyright 1997-2015, United States Postal Service

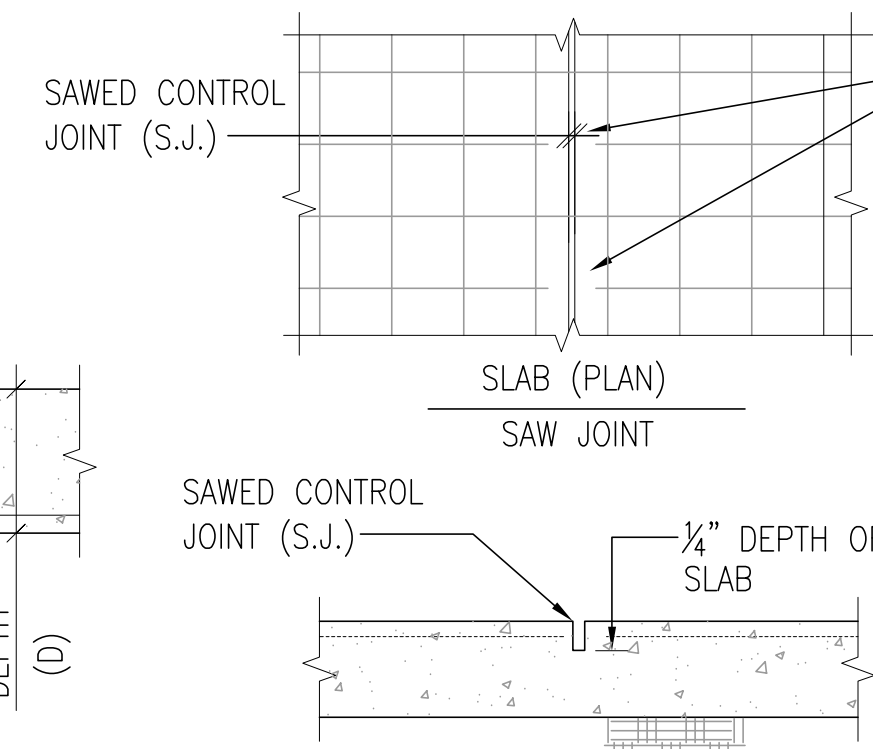




SLAB (ELEVATION)  
CONSTRUCTION JOINT



TURN DOWN SLAB FOOTING  
(ELEV.) CONSTRUCTION JOINT



SLAB (ELEVATION)  
SAW JOINT

PRIOR TO POURING CONCRETE, CUT OUT ALTERNATE WIRES OF WELDED WIRE FABRIC @ SAW JOINT

**GENERAL NOTES**

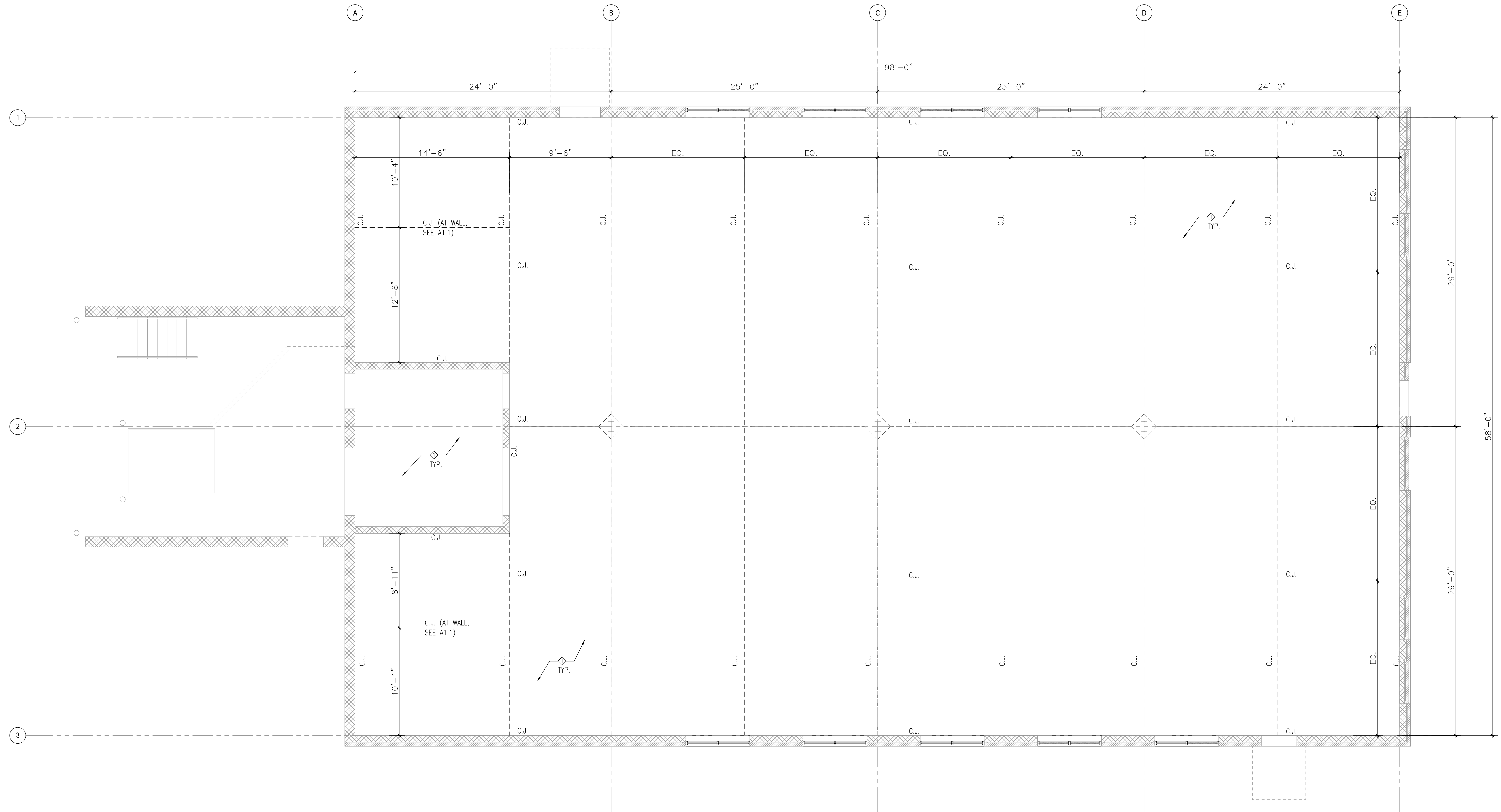
1. CONTRACTOR TO VERIFY ALL EXISTING DIMENSIONS BEFORE COMMENCING WORK.
2. CONTRACTOR TO PROTECT EXISTING BUILDING SHELL ITEMS INCLUDING WALLS, COLUMNS, STAIRS, FRAMING, AND ROOF. TYPICAL.
3. ALL NEW CONSTRUCTION SHALL BE PER USPS STANDARDS.

**KEYED NOTES**

- 1. PROVIDE 4" REINFORCED CONCRETE SLAB ON GRADE, ON 15 MIL VAPOR BARRIER OVER EXISTING FILL MATERIAL. REINFORCE SLAB WITH 6X6-W2.9XW2.9 WELDED WIRE FABRIC PLACED 1" FROM TOP OF SLAB. PROVIDE CONTROL JOINTS BETWEEN SLAB AND EXISTING CMU WALLS. SEE DETAILS 1/A1.0.

**1 TYPICAL CONTROL JOINT DETAILS**

SCALE: N.T.S.



THE SYMBOL C.J. INDICATES SLAB CONTROL JOINT LOCATIONS. FOR CONTROL JOINT DETAILS, SEE 1/A1.0. OFFSET CONTROL JOINTS MINIMUM 8" AROUND EACH STRUCTURAL COLUMN.

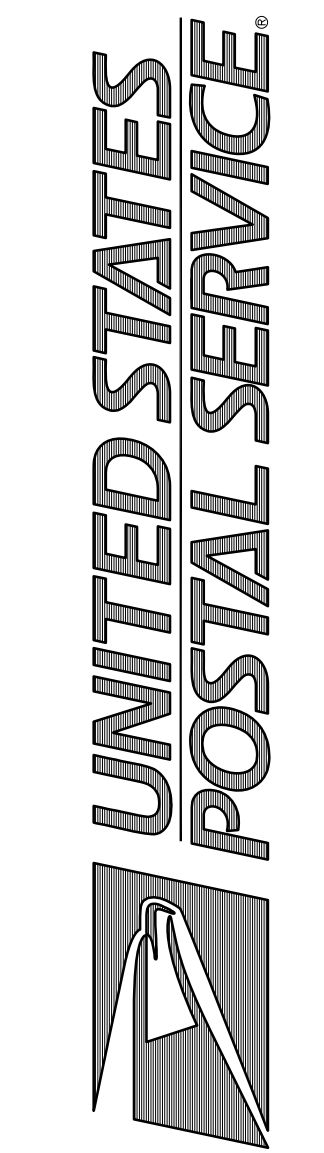
**2 CONTROL JOINT PLAN**

SCALE: 1/4" = 1'-0"



The Walker Group Architecture, Inc  
PO Box 541, New Bern, NC 28563  
252.636.8778 (PHONE)  
252.636.8892 (FAX)

INTERIOR UPFIT  
USPS SPOUT SPRINGS NC CAX  
XXXXXXXXXX  
XXXXXXXXXX



A1.0 Architectural Control Joint Plan  
Scale: As Indicated Date: 5/17/2018  
Project: SPOUT SPRINGS INTERIOR UPFIT  
USPS File Number: XXXXXX  
USPS Project Number: 02932

© Copyright 1997-2015, United States Postal Service

Columbia, MD 21045-0701



**FIXTURE PLAN LEGEND**

- CASEWORK TYPE: REFER TO SPECIFICATION SECTION 123504 FOR ADDITIONAL INFORMATION
- ITEM NUMBER: THIS IS A PLAN REFERENCE NUMBER UTILIZED IN LOCATING A SPECIFIC FIXTURE NIC = NOT IN CONTRACT, USPS FURNISHED AND INSTALLED.
- EQUIPMENT TYPE: REFER TO SPECIFICATION SECTION 011000 FOR ADDITIONAL INFORMATION
- ITEM NUMBER: THIS IS A PLAN REFERENCE NUMBER UTILIZED IN LOCATING A SPECIFIC FIXTURE NIC = NOT IN CONTRACT, USPS FURNISHED AND INSTALLED.

**FLOOR PLAN LEGEND**

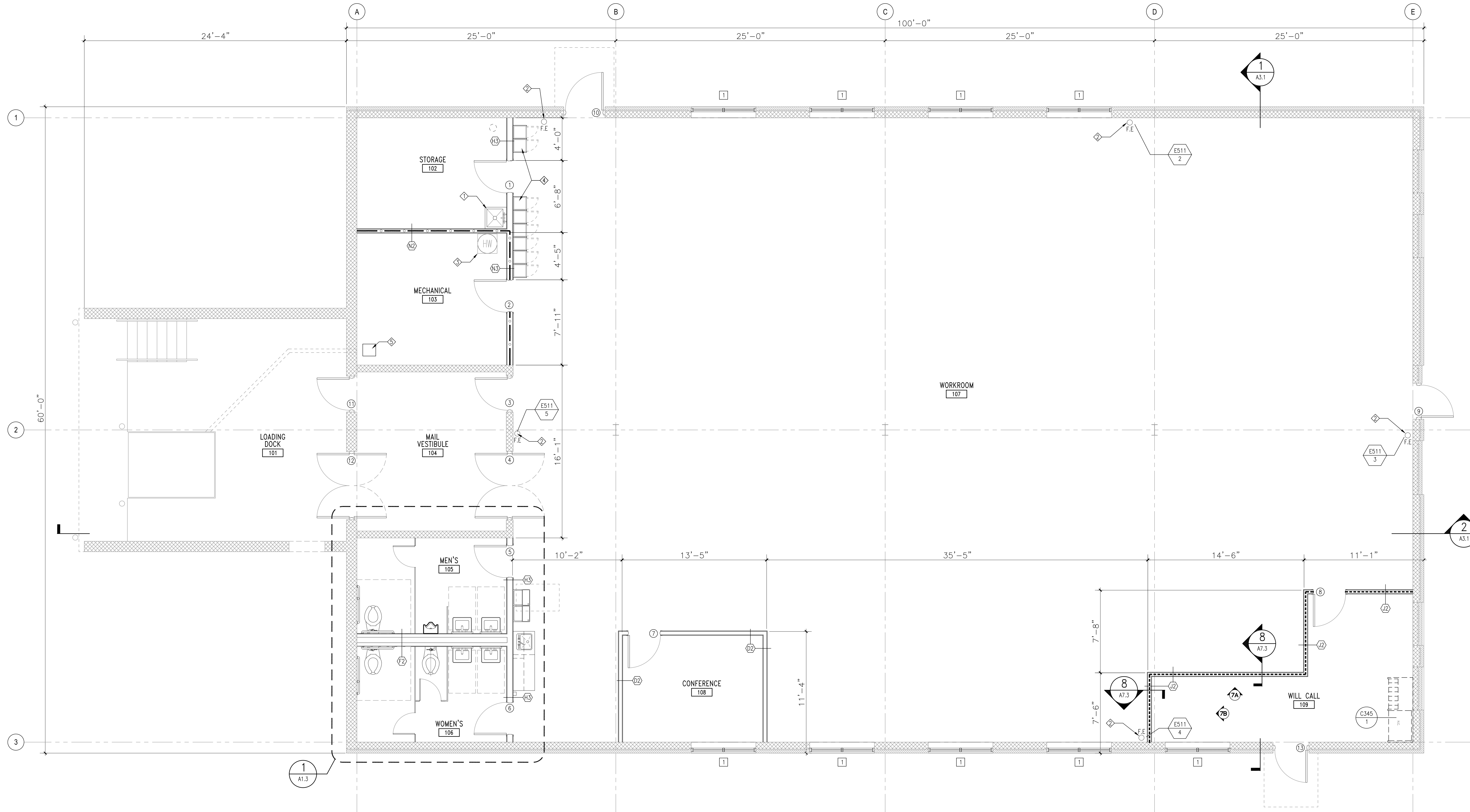
- 4" PARTITION - SEE SHEET A6.4 FOR WALL TYPES
- 4" RATED PARTITION - SEE SHEET A6.4 FOR WALL TYPES
- 6" PARTITION - SEE SHEET A6.4 FOR WALL TYPES
- 6" RATED PARTITION - SEE SHEET A6.4 FOR WALL TYPES
- CHASE WALL - SEE SHEET A6.4 FOR WALL TYPES
- SECURITY PARTITION - SEE SHEET A6.4 FOR WALL TYPES
- INTERIOR ELEVATION - SEE SHEET 7.3
- DOOR NUMBER - SEE SHEET A2.1 FOR DOOR SCHEDULE
- WINDOW TYPE - SEE SHEET A2.1 FOR WINDOW TYPES
- OFFICE ROOM NAME & NUMBER - SEE SHEET A2.1 FOR FINISH SCHEDULE

**GENERAL NOTES**

1. SEE PLUMBING, MECHANICAL, AND ELECTRICAL DRAWINGS FOR ADDITIONAL NOTES.
2. UNLESS OTHERWISE NOTED, INTERIOR DOOR ROUGH OPENING SHALL BE 4" FROM ADJOINING WALL PARTITION.
3. CONTRACTOR TO VERIFY ALL EXISTING DIMENSIONS BEFORE COMMENCING WORK.
4. CONTRACTOR TO PROTECT EXISTING BUILDING SHELL ITEMS INCLUDING WALLS, COLUMNS, STAIRS, FRAMING, AND ROOF, TYPICAL.
5. SEE SCHEDULES SHEET A2.1 FOR FLOOR AND WALL FINISHES, DOORS, AND WINDOWS.
6. ALL NEW CONSTRUCTION SHALL BE PER USPS STANDARDS.

**KEYED NOTES**

- PROVIDE NEW MOP BASIN AND 8"x4"x4" FRP WANSKOT ON BOTH ADJACENT WALLS. SEE DETAIL 15/A5.1.
- PROVIDE NEW FIRE EXTINGUISHER PER USPS STANDARDS. INSTALL PER NFPA 72. SEE DETAIL 5/A7.3.
- PROVIDE NEW TANK WATER HEATER. CONTRACTOR TO PROVIDE 4" CONCRETE PAD ON TOP OF SLAB FOR WATER HEATER. SEE PLUMBING.
- PROVIDE 8 NEW DOUBLE LOCKERS, SEE DETAIL 11/A6.4.
- HYDRAULIC LIFT PUMP LOCATION, SEE MECHANICAL.

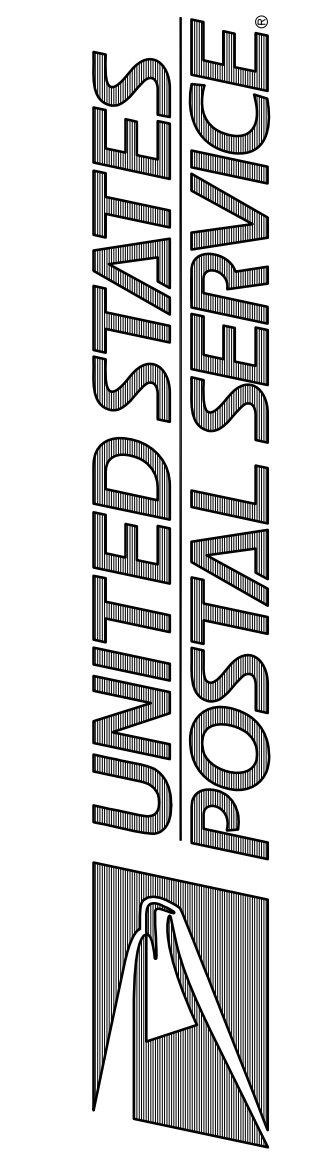


**1 FLOOR PLAN**  
SCALE: 1/4" = 1'-0"



The Walker Group Architecture, Inc  
PO Box 541, New Bern, NC 28563  
252.636.8778 (PHONE)  
252.636.8992 (FAX)

INTERIOR UPFIT  
USPS SPOUT SPRINGS NC CAX  
XXXXXXXXXX  
XXXXXXXXXX



Columbia FS010500 Little Patuxent Parkway, Second Floor, Columbia, MD 21045-0701

Revisions:  
Date: 5/17/2018  
Project: SPOUT SPRINGS INTERIOR UPFIT  
USPS File Number: XXXXXX  
USPS Project Number: 097932

© Copyright 1997-2015, United States Postal Service



**REFLECTED CEILING PLAN LEGEND**

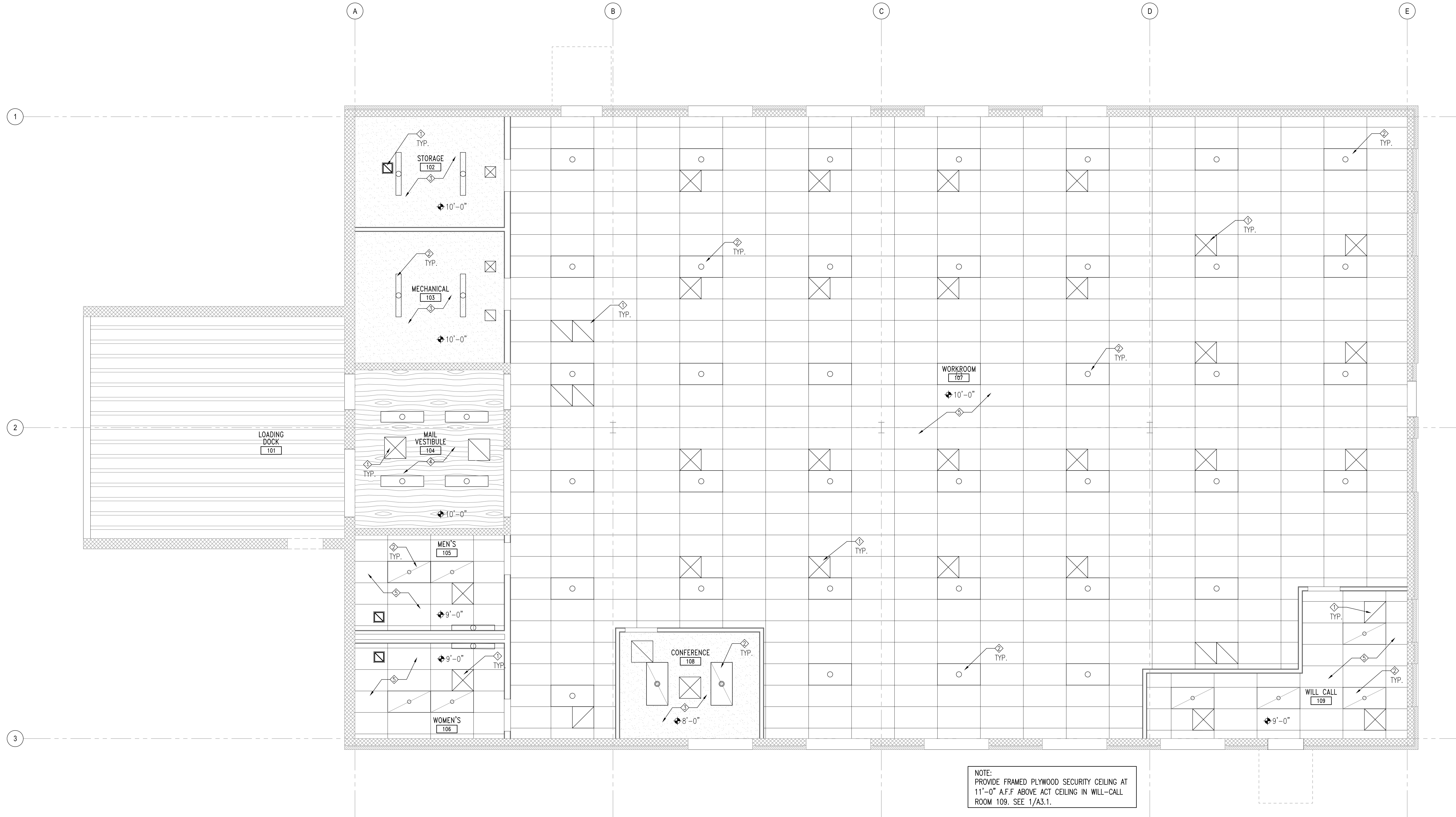
- 4" SURFACE MOUNTED LIGHTING FIXTURE
- 2"x4" FLUORESCENT LIGHTING FIXTURE
- 1"x4" FLUORESCENT LIGHTING FIXTURE
- SUPPLY DIFFUSER
- RETURN REGISTER
- EXHAUST FAN
- 2"x4" SUSPENDED ACOUSTICAL CEILING
- SUSPENDED PLYWOOD
- GYPSUM BOARD CEILING
- 9'-0" CEILING OR SOFFIT HEIGHT

**GENERAL NOTES**

1. SEE PLUMBING, MECHANICAL, AND ELECTRICAL DRAWINGS FOR ADDITIONAL NOTES.
2. CONTRACTOR TO VERIFY ALL EXISTING DIMENSIONS BEFORE COMMENCING WORK.
3. CONTRACTOR TO PROTECT EXISTING BUILDING SHELL ITEMS INCLUDING WALLS, COLUMNS, STAIRS, FRAMING, AND ROOF, TYPICAL.
4. SEE SCHEDULES SHEET A2.1 CEILING FINISHES.
5. ALL NEW CONSTRUCTION SHALL BE PER USPS STANDARDS.

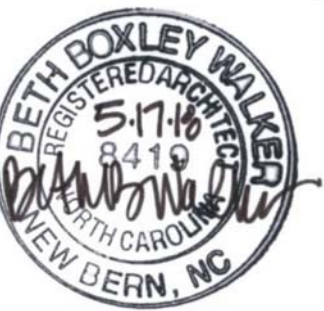
**KEYED NOTES**

1. PROVIDE NEW HVAC DIFFUSERS, SEE MECHANICAL.
2. PROVIDE NEW LIGHTING, SEE ELECTRICAL.
3. PROVIDE NEW SUSPENDED GYPSUM BOARD CEILING. PAINT. SEE DETAILS/A7.3.
4. PROVIDE NEW SUSPENDED PLYWOOD CEILING. PAINT. SEE DETAIL 9/A7.3.
5. PROVIDE NEW 2"x4" ACOUSTICAL CEILING TILE, GRID, AND HANGARS.



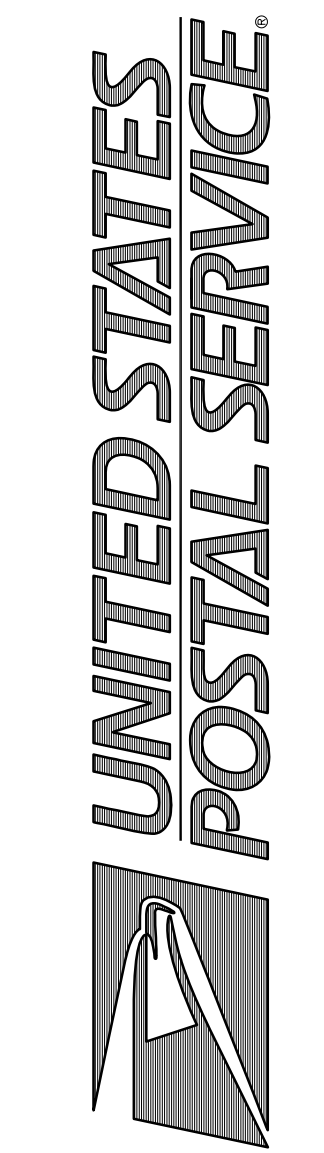
NOTE:  
PROVIDE FRAMED PLYWOOD SECURITY CEILING AT  
11'-0" A.F.F ABOVE ACT CEILING IN WILL-CALL  
ROOM 109. SEE 1/A3.1.

**1 REFLECTED CEILING PLAN**  
SCALE: 1/4" = 1'-0"



The Walker Group Architecture, Inc  
PO Box 541, New Bern, NC 28563  
252.636.8778 (PHONE)  
252.636.8992 (FAX)

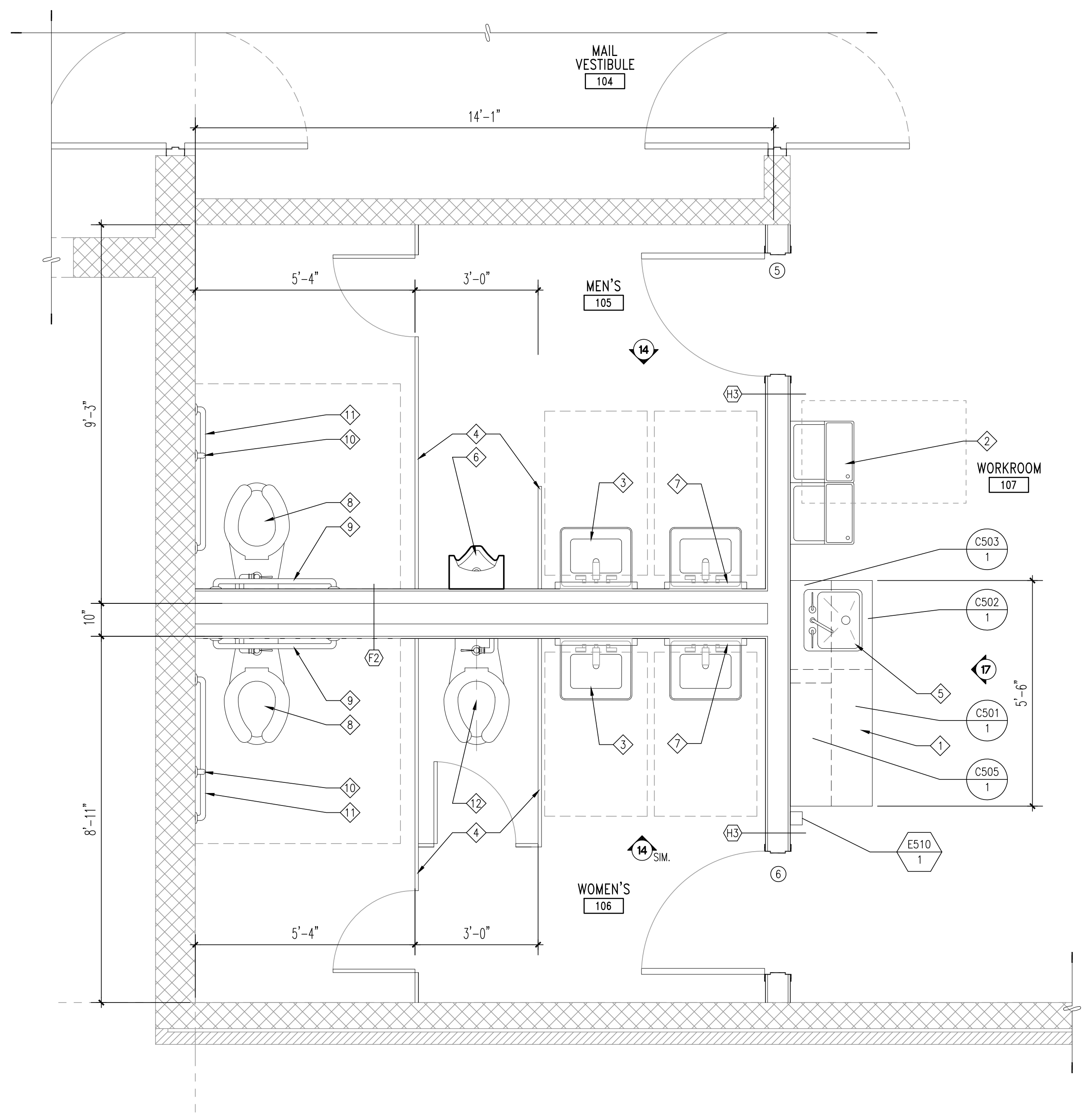
INTERIOR UPFIT  
USPS SPOUT SPRINGS NC CAX  
XXXXXXXXXX  
XXXXXXXXXX



Columbia F50,10500 Little Patuxent Parkway, Second Floor, Columbia, MD 21045-0701

Revisions:  
A1.2 Architectural Reflected Ceiling Plan  
Scale: As Indicated Date: 5/17/2018  
Project: SPOUT SPRINGS INTERIOR UPFIT  
USPS File Number: XXXXXX  
USPS Project Number: 097932

© Copyright 1997-2015, United States Postal Service



NOTE:  
USPS SHALL PROVIDE AND INSTALL PAPER TOWEL DISPENSERS, WASTE RECEPTACLES, SOAP DISPENSERS, AND TOILET TISSUE DISPENSERS.

**1 ENLARGED BATHROOM PLAN**  
SCALE: 1/2" = 1'-0"

**GENERAL NOTES**

1. SEE PLUMBING, MECHANICAL, AND ELECTRICAL DRAWINGS FOR ADDITIONAL NOTES.
2. UNLESS OTHERWISE NOTED, INTERIOR DOOR ROUGH OPENING SHALL BE 4" FROM ADJOINING WALL PARTITION.
3. CONTRACTOR TO VERIFY ALL EXISTING DIMENSIONS BEFORE COMMENCING WORK.
4. CONTRACTOR TO PROTECT EXISTING BUILDING SHELL ITEMS INCLUDING WALLS, COLUMNS, STAIRS, FRAMING, AND ROOF, TYPICAL.
5. SEE SCHEDULES SHEET A2.1 FOR FLOOR AND WALL FINISHES, DOORS, AND WINDOWS.
6. ALL NEW CONSTRUCTION SHALL BE PER USPS STANDARDS.

**KEYED NOTES**

1. PROVIDE PLASTIC LAMINATE CLAD CABINETS PER USPS STANDARDS. SEE SHEET A6.4.
2. HI-LOW ADA ACCESSIBLE WATER FOUNTAIN, SEE DETAIL 16/A5.1.
3. WALL MOUNTED SINK. SEE DETAIL 11/A5.1.
4. PROVIDE 1" THICK WATER/GRAFFITI RESISTANT, NON-ABSORBENT PLASTIC FACED TOILET/URINAL PARTITIONS PER USPS STANDARDS. CLEAR WIDTH AS SHOWN.
5. PROVIDE NEW RIM MOUNTED SINK. SEE DETAIL 11/A5.1.
6. WALL MOUNTED URINAL. CENTERLINE OF URINAL SHALL BE MIN. SEE DETAIL 11/A5.1.
7. 24" X 36" ADA TILT MIRROR W/ STAINLESS STEEL FRAME. SEE DETAIL 11/A5.1.
8. FLOOR MOUNTED FLUSH VALVE ADA TOILET. SEE DETAIL 11/A5.1.
9. 36" GRAB BAR. SEE DETAIL 11/A5.1.
10. 18" GRAB BAR. SEE DETAIL 11/A5.1.
11. 42" GRAB BAR. SEE DETAIL 11/A5.1.
12. FLOOR MOUNTED FLUSH VALVE TOILET. SEE PLUMBING. SEE DETAIL 11/A5.1.

**FIXTURE PLAN LEGEND**

- CASEWORK TYPE:**  
REFER TO SPECIFICATION SECTION 123504 FOR ADDITIONAL INFORMATION
- ITEM NUMBER:**  
THIS IS A PLAN REFERENCE NUMBER UTILIZED IN LOCATING A SPECIFIC FIXTURE  
NIC = NOT IN CONTRACT, USPS FURNISHED AND INSTALLED.
- EQUIPMENT TYPE:**  
REFER TO SPECIFICATION SECTION 011000 FOR ADDITIONAL INFORMATION
- ITEM NUMBER:**  
THIS IS A PLAN REFERENCE NUMBER UTILIZED IN LOCATING A SPECIFIC FIXTURE  
NIC = NOT IN CONTRACT, USPS FURNISHED AND INSTALLED.

**FLOOR PLAN LEGEND**

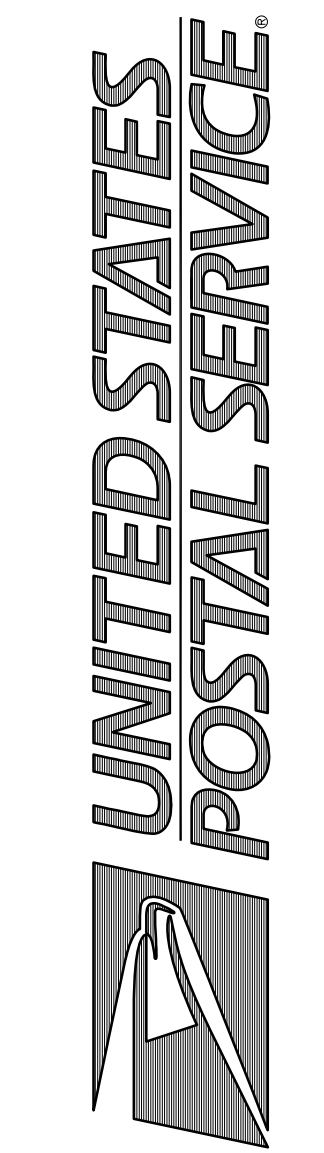
- 15 6" PARTITION - SEE SHEET A6.4 FOR WALL TYPES
- 22 CHASE WALL - SEE SHEET A6.4 FOR WALL TYPES
- 1 INTERIOR ELEVATION - SEE SHEET A5.1
- 1 DOOR NUMBER - SEE SHEET A2.1 FOR DOOR SCHEDULE
- OFFICE 101 ROOM NAME & NUMBER - SEE SHEET A2.1 FOR FINISH SCHEDULE



© Copyright 1997-2015, United States Postal Service

The Walker Group Architecture, Inc  
PO Box 541, New Bern, NC 28563  
252.636.8778 (PHONE)  
252.636.8892 (FAX)

INTERIOR UPTIT  
USPS SPOUT SPRINGS NC CAX  
XXXXXXXXXX  
XXXXXXXXXX



Columbia F50,10500 Little Patuxent Parkway, Second Floor, Columbia, MD 21045-0701

**A1.3 Architectural Enlarged Floor Plans**  
Scale: As Indicated Date: 5/17/2018  
Project: SPOUT SPRINGS INTERIOR UPTIT  
USPS File Number: XXXXXX  
USPS Project Number: 097932

Revisions:





The Walker Group Architecture, Inc  
 PO Box 541, New Bern, NC 28563  
 252.636.8778 (PHONE)  
 252.636.8992 (FAX)

INTERIOR UPTF  
 USPS SPOUT SPRINGS NC CAX  
 XXXXXXXXXX  
 XXXXXXXXXX

UNITED STATES  
 POSTAL SERVICE

A2.1 Architectural Schedules and Details  
 Scale: As Indicated Date: 5/17/2018  
 Project: SPOUT SPRINGS INTERIOR UPTF  
 USPS File Number: XXXXXX  
 USPS Project Number: 097932

© Copyright, 1997-2015, United States Postal Service

NO.	SIZE			DOOR			FRAME			DETAIL REFERENCE			SIGNAGE	REMARKS
	WIDTH	HEIGHT	THICK.	TYPE	MATERIAL	FINISH	TYPE	MATERIAL	FINISH	HEAD	JAMB	THRESH.		
1	3'-0"	7'-0"	1 3/4"	A	SCW	PAINT	A	HM	PAINT	6/A6.3	6/A6.3	--	X	STORAGE
2	3'-0"	7'-0"	1 3/4"	A	SCW	PAINT	A	HM	PAINT	6/A6.3	6/A6.3	--	X	MECHANICAL, 60 MINUTE FIRE RATED
3	3'-0"	7'-0"	1 3/4"	A	HM	PAINT	B	HM	PAINT	7/A6.3	7/A6.3	1/A6.3	X	MAIL VESTIBULE
4	(2) 3'-0"	7'-0"	1 3/4"	E	HM	PAINT	D	HM	PAINT	8/A6.3	8/A6.3	1/A6.3	X	MAIL VESTIBULE, SEE NOTE F
5	3'-0"	7'-0"	1 3/4"	A	SCW	PAINT	A	HM	PAINT	6/A6.3	6/A6.3	--	X	MEN'S
6	3'-0"	7'-0"	1 3/4"	A	SCW	PAINT	A	HM	PAINT	6/A6.3	6/A6.3	--	X	WOMEN'S
7	3'-0"	7'-0"	1 3/4"	A	SCW	PAINT	A	HM	PAINT	6/A6.3	6/A6.3	--	X	CONFERENCE
8	3'-0"	7'-0"	1 3/4"	F	SCW	PAINT	A	HM	PAINT	6/A6.3	6/A6.3	--	X	WILL CALL, SEE NOTES E AND G
9	3'-0"	7'-0"	1 3/4"	A	HM	PAINT	B	HM	PAINT	7/A6.3	7/A6.3	1/A6.3	X	EXTERIOR TO WORKROOM, SEE NOTE D
10	3'-6"	7'-0"	1 3/4"	A	HM	PAINT	C	HM	PAINT	7/A6.3	7/A6.3	1/A6.3	X	EXTERIOR TO WORKROOM, SEE NOTE D
11	3'-0"	7'-0"	1 3/4"	A	HM	PAINT	B	HM	PAINT	7/A6.3	7/A6.3	1/A6.3	X	LOADING DOCK TO MAIL VESTIBULE, SEE NOTE D
12	(2) 3'-0"	7'-0"	1 3/4"	E	HM	PAINT	D	HM	PAINT	8/A6.3	8/A6.3	1/A6.3	X	LOADING DOCK TO MAIL VESTIBULE, SEE NOTES D AND F
13	3'-0"	7'-0"	1 3/4"	A	HM	PAINT	B	HM	PAINT	7/A6.3	7/A6.3	1/A6.3	X	EXTERIOR TO WILL CALL, SEE NOTE D

NOTE:

- A. SEE SPECS. FOR DOOR AND FRAME PAINT FINISH.
- B. DOORS AND FRAMES ARE TO BE PAINTED TO MATCH THEIR ADJACENT WALLS UNLESS NOTED OTHERWISE.
- C. ROOM OR EXIT DOOR SIGNAGE REQUIRED. SEE DETAILS 9/A7.3, 11/A7.3 AND 12/A7.3.
- D. EXTERIOR DOORS, FRAMES, AND HARDWARE SHALL BE CONTRACTOR PURCHASED AND INSTALLED BY OWNER. VERIFY OPENING SIZE PRIOR TO ORDERING.
- E. PROVIDE DOOR BELL, SEE ELECTRICAL.
- F. IMPACT BUMPERS ON TRAFFIC SIDE OF DOOR ONLY. PROVIDE 3/4" KICKPLATE ON BACK SIDE OF DOOR, TYP. IMPACT DOORS ARE 180 DEGREE SWING. PROVIDE OVERHEAD DOOR STOPS. SEE DETAIL 11/A6.1.
- G. FOR THE USPS WICKET DOOR, SEE DETAIL 8/A2.1.
- H. FOR HM FRAMES, SEE DETAIL 2/A6.3 FOR ADDITIONAL USPS SPECIFIC INFORMATION.
- I. CONTRACTOR TO REFER TO C&F HARDWARE GUIDE FOR HARDWARE REQUIREMENTS OF EACH DOOR PRIOR TO ORDERING DOORS AND HARDWARE. COORDINATE WITH USPS SPECIFICATIONS.

GENERAL ACCESSIBILITY REQUIREMENTS:

- A. DOORS SHALL PROVIDE A MINIMUM CLEAR OPENING OF 32" WIDE BY 6'-8" HIGH WHEN AT A 90 DEGREE ANGLE TO THE CLOSED POSITION.
- B. THE BOTTOM 10" OF THE DOORS ARE TO HAVE A SMOOTH UNINTERRUPTED SURFACE TO ACCOMMODATE OPENING BY WHEEL CHAIR FOOT REST.
- C. MAXIMUM EFFORT TO OPERATE DOORS SHALL NOT EXCEED 8.5 POUNDS FOR EXTERIOR DOORS, AND 5 POUNDS FOR INTERIOR DOORS. SUCH PULL OR PUSH EFFORTS ARE TO BE APPLIED AT RIGHT ANGLES TO HINGED DOORS. WHEN FIRE DOORS ARE REQUIRED, COMPENSATING DEVICES OR AUTOMATIC DOOR OPERATORS MAY BE UTILIZED TO MEET THE REQUIREMENTS.

NO.	SIZE			GLAZING		FRAME			REMARKS
	WIDTH	HEIGHT	THICK.	INSULATED	SECURITY FILM	TYPE	MATERIAL	FINISH	
1	6'-0"	1'-8"	1"	YES	YES	A	ALUM	FF	

NOTE:

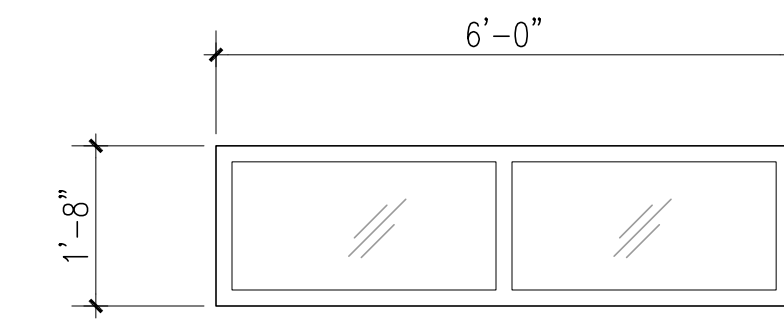
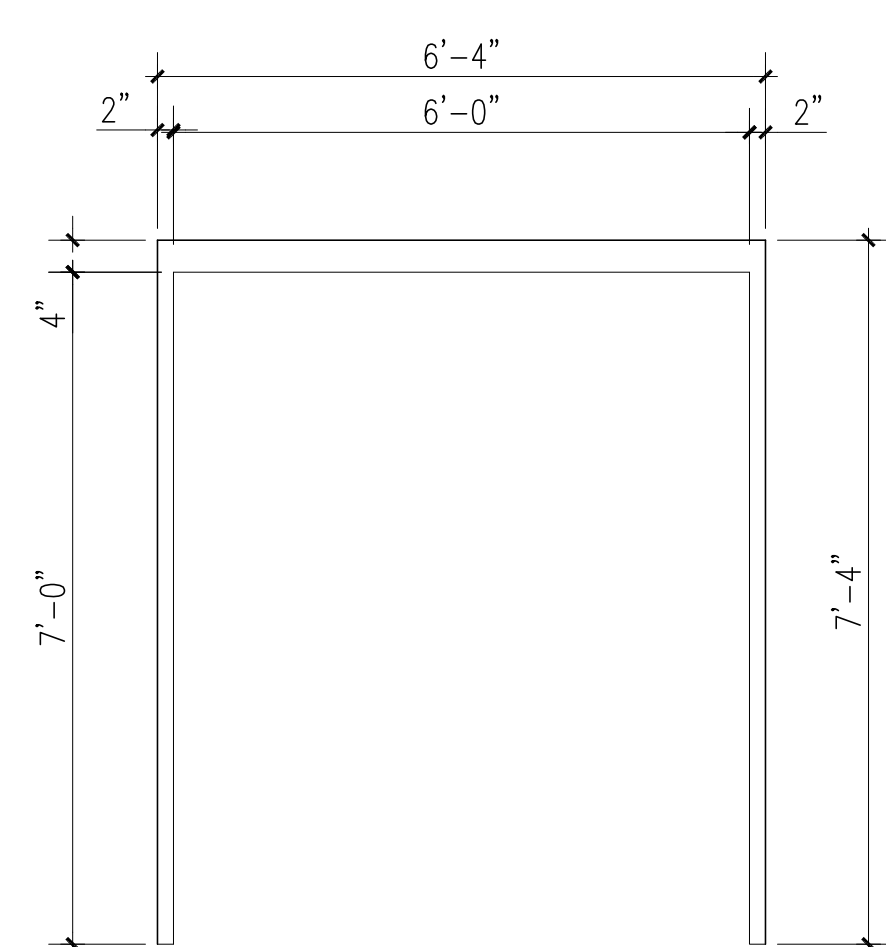
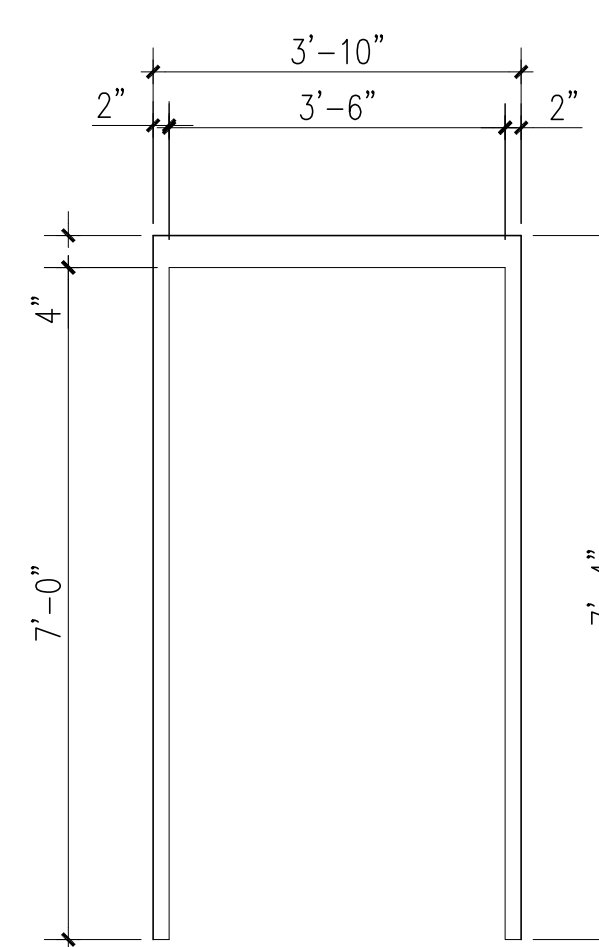
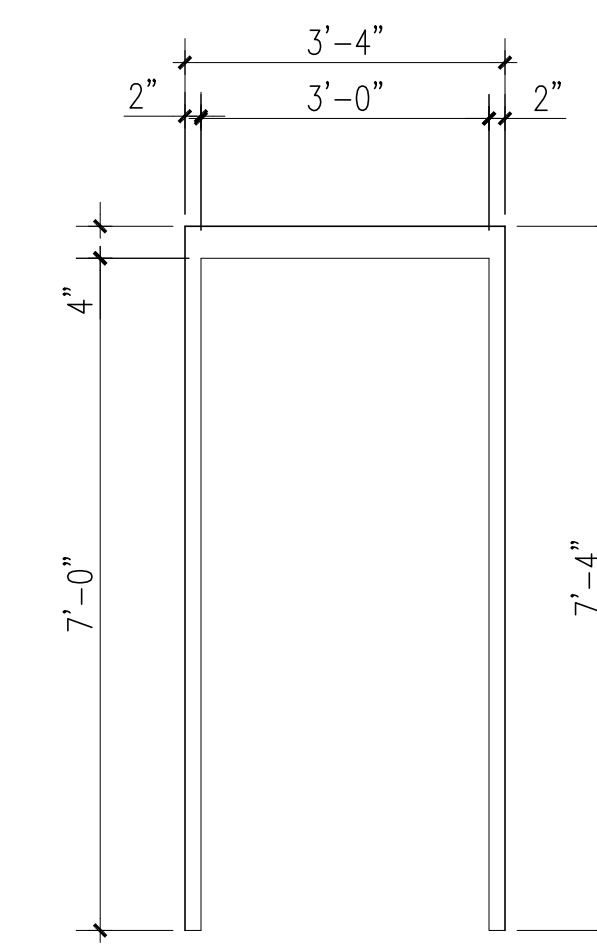
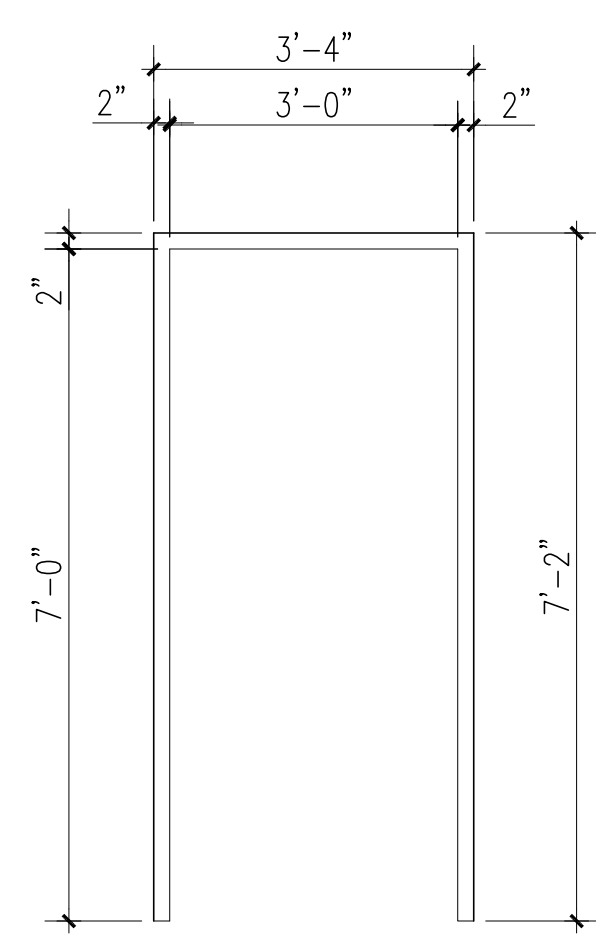
- A. WINDOW SHALL BE CONTRACTOR PURCHASED AND INSTALLED BY OWNER. VERIFY ALL WINDOW ROUGH OPENING DIMENSIONS IN FIELD PRIOR TO ORDERING UNITS.
- B. GLASS: ALL GLASS TO CONFORM TO CONSUMER SAFETY COMMISSION, PRODUCT SAFETY ACT 16 CFR 1201.
- C. FRAME/JAMB: SEE DETAIL 3/A6.3.

ROOM FINISH SCHEDULE

QUANTITY	ROOM NUMBER	FLOOR / BASE	WALLS	CLQ. MATL.	CLQ. HGT.	NOTES
		SEALED CONCRETE				
		EPoxy LIGHT GRAY				
		RF-1				
		WB-1				
		P-1				
		P-2				
		P-5				
		AL-2				
		ACT-1				
		GYP. BD. (P-1)				
		PLYWOOD (P-1)				
		8'-0"				
		9'-0"				
		9'-0"				
		UNDESIDE OF TRUSS				

NOTE:

- A. SEE DOOR SCHEDULE FOR ADDITIONAL FINISH INFORMATION.
- B. PLYWOOD SECURITY CEILING @ 2'-0" ABOVE ACOUSTICAL CEILING TILE IN WILL CALL, SEE 11/A3.1.
- C. EPOXY BASED PAINTS FOR ALL PAINTED WALLS.
- D. ALL GYPSUM BOARD WALLS IN WORKROOM 107 SHALL HAVE 4'-0" HIGH FIBERGLASS REINFORCED PLASTIC WAINSCOT. SEE DETAIL 15/A3.1.
- E. GYPSUM BOARD: ALL GYP. BD. TO BE 5/8" TYPE "X" UNLESS NOTED OTHERWISE. INSTALL MOISTURE RESISTANT GYP. BD. BEHIND SINKS, IN TOILET, JANITOR, MECHANICAL ROOMS, AND OTHER POTENTIALLY DAMP LOCATIONS.
- F. SEE SHEET A7.3 FOR DOOR AND WALL PICTOGRAPH DETAILS. CONTRACTOR TO COORDINATE LOCATION OF ALL PICTOGRAPHS WITH USPS PRIOR TO CONSTRUCTION.



1 FRAME TYPE A

SCALE: 1/2" = 1'-0"

2 FRAME TYPE B

SCALE: 1/2" = 1'-0"

3 FRAME TYPE C

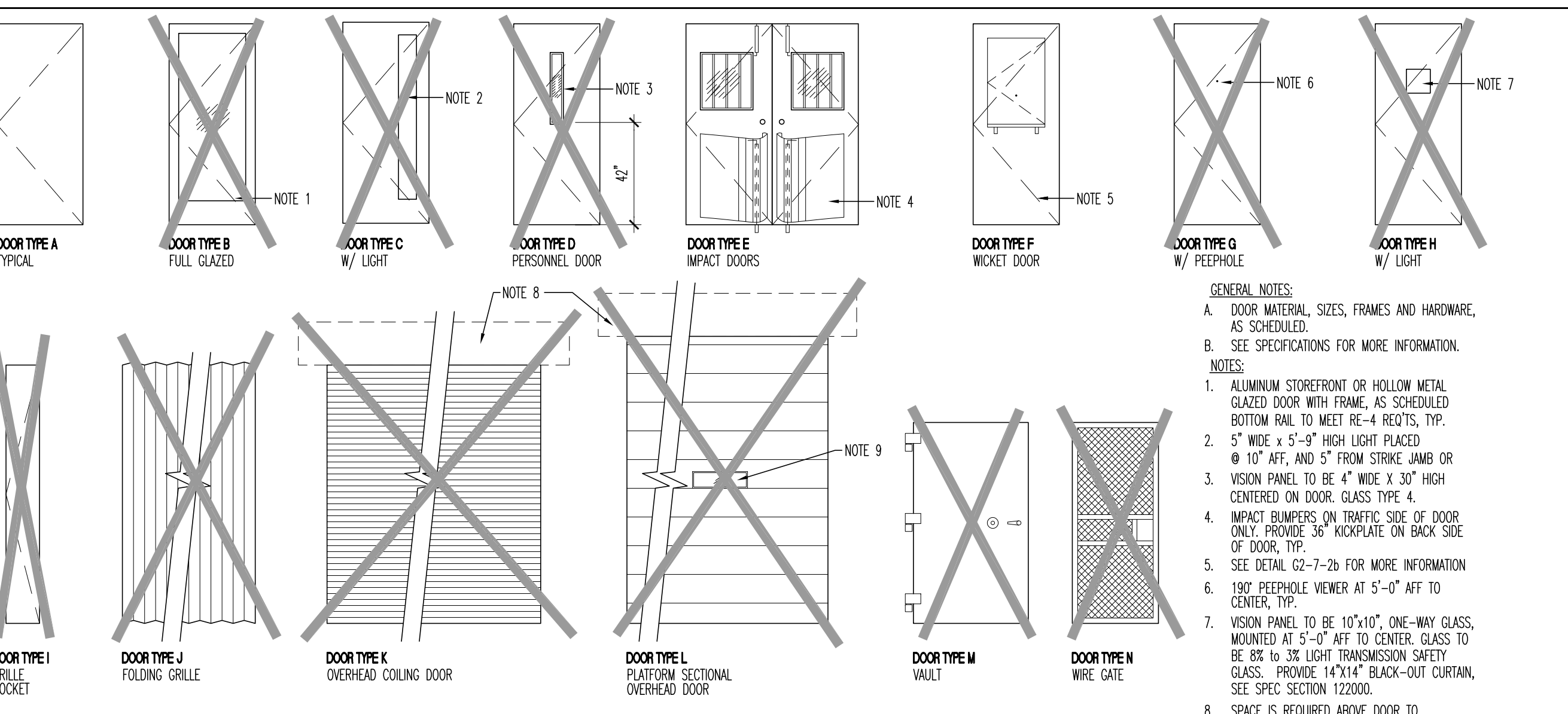
SCALE: 1/2" = 1'-0"

4 FRAME TYPE D

SCALE: 1/2" = 1'-0"

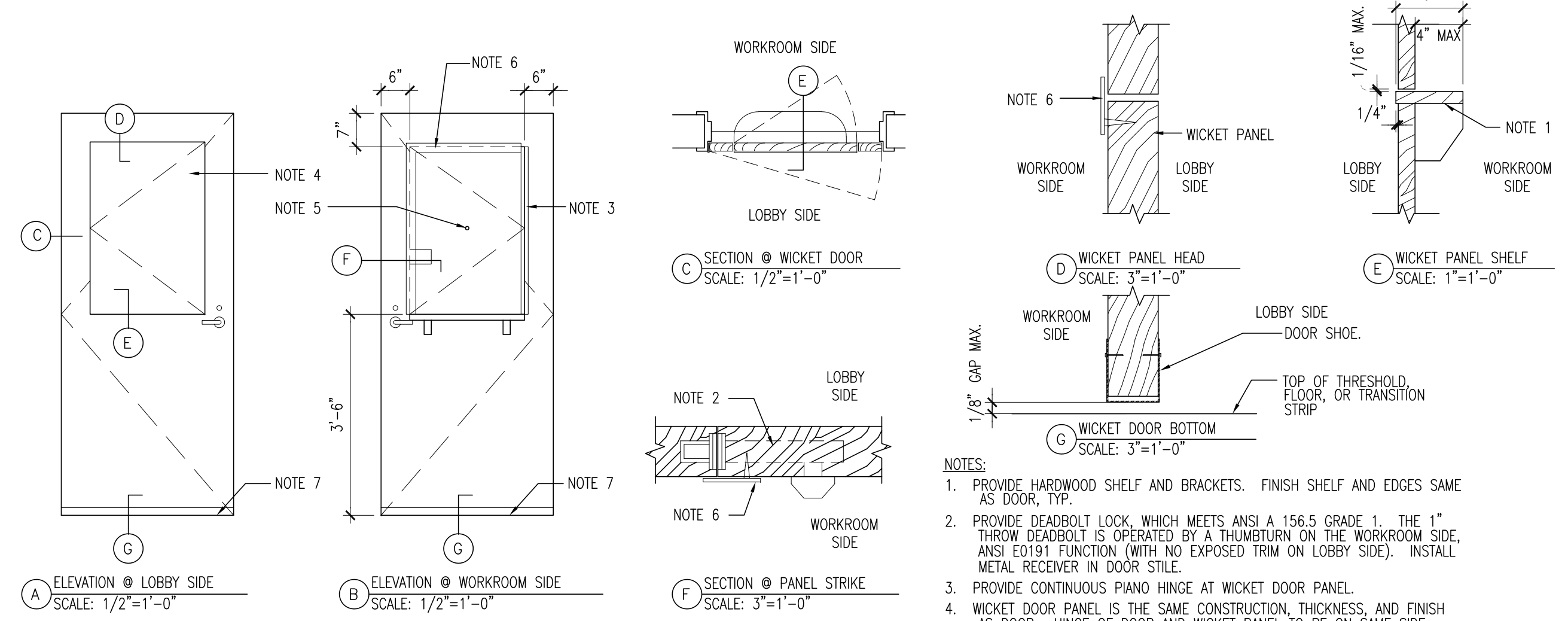
5 WINDOW FRAME TYPE A

SCALE: 1/2" = 1'-0"



6 COMPACT BUILDING - ELEVATIONS OF TYPICAL DOOR TYPES

G2-7-2 a



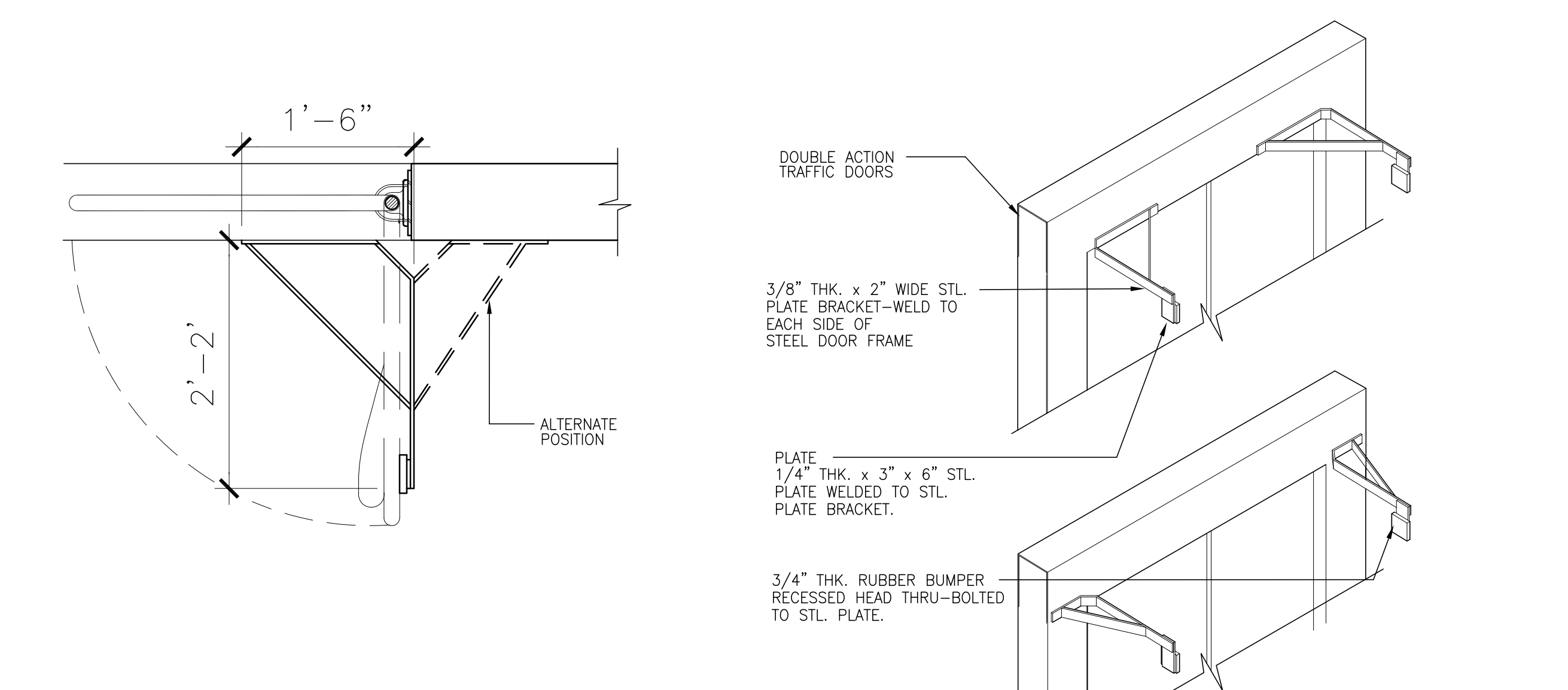
8 DOORS AND HARDWARE - ELEVATIONS AND DETAILS - WICKET DOOR

G2-7-2 b

BASE  
 VB-1 STANDARD 4" WALL BASE, BLACK  
 EPOXY FLOOR AND WALL COATING  
 LIGHT GRAY  
 PAINT  
 P-1 (WHITE) GLIDDEN (ICI) #50YY 83/057  
 P-2 (LIGHT GRAY) GLIDDEN (ICI): #50BG 62/007  
 P-3 NOT USED  
 P-4 (RED) PMS 485 "POSTAL RED"  
 P-5 (BLUE) PMS 294 "POSTAL BLUE"  
 P-6 (MD. GRAY) SHERWIN WILLIAMS, #SW1232, "DUBLIN GRAY"  
 P-7 (BLACK) ECKSTEIN, SEMI-GLOSS BLACK  
 ACOUSTICAL CEILING TILE & GRID  
 ACT-1 ARMSTRONG, Fine Fissured #1729, White, 2'x4'x5/8" LAY-IN  
 CG-1 ARMSTRONG, PRELUDE 15/16" WHITE, EXPOSED TEE SYSTEM CEILING GRID  
 PLASTIC LAMINATE  
 PL-1 NEVAMAR, #5-7-271, TEXTURED FINISH, "SMOKEY WHITE"  
 PL-2 FORMICA #6902-58 "GREENADONE"  
 PL-3 FORMICA, #914-58 "MARINE BLUE"  
 PL-4 WILSONART, #4142-60, "GREY GLACE"  
 PL-5 FORBIO, WALTON, UNI #186, "LEAD"  
 SOLID SURFACING  
 S-1 SAMSUNG STARON "SOLID BRIGHT WHITE"  
 FIBERGLASS REINFORCED PLASTIC PANELS  
 FRP STRUCTOGLAS FRP 1207 GRAY OR EQUAL  
 NOTE:  
 1. FINISHES LISTED ARE THE PREFERRED OPTION. ACCEPTABLE ALTERNATES ARE LISTED IN THE APPROPRIATE SPECIFICATION SECTIONS.

10 USPS STANDARD COLOR AND MATERIAL LIST

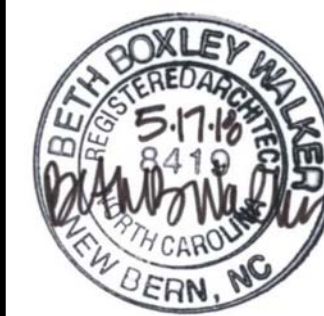
G2-5-1 a



11 PROTECTIVE BARRIERS - DETAILS - OVERHEAD DOOR STOPS

G2-7-4 d

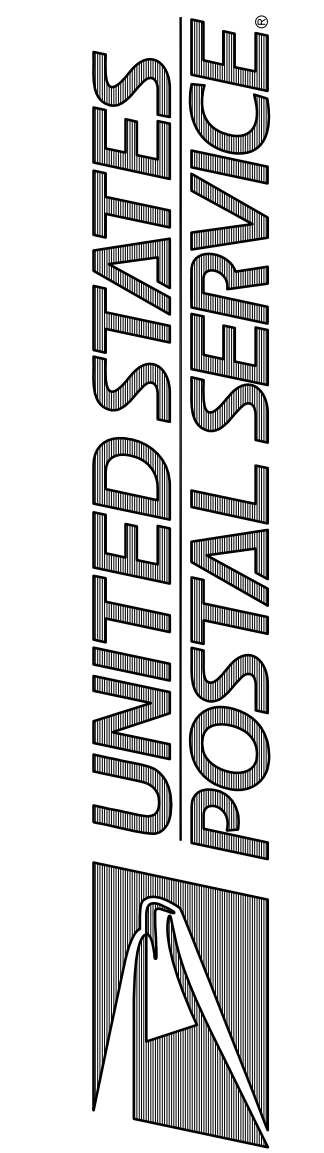




© Copyright 1997-2015, United States Postal Service

The Walker Group Architecture, Inc  
PO Box 541, New Bern, NC 28563  
252.636.8778 (PHONE)  
252.636.8992 (FAX)

INTERIOR UPFIT  
USPS SPOUT SPRINGS NC CAX  
XXXXXXXXXX  
XXXXXXXXXX



Columbia, MD 21045-0701  
Columbia, MD 21050 Little Patuxent Parkway, Second Floor, Columbia, MD 21045-0701

**A3.1 Architectural Building Sections**  
Scale: As Indicated Date: 5/17/2018  
Project: SPOUT SPRINGS INTERIOR UPFIT  
USPS File Number: XXXXXX  
USPS Project Number: 097932

### GENERAL NOTES

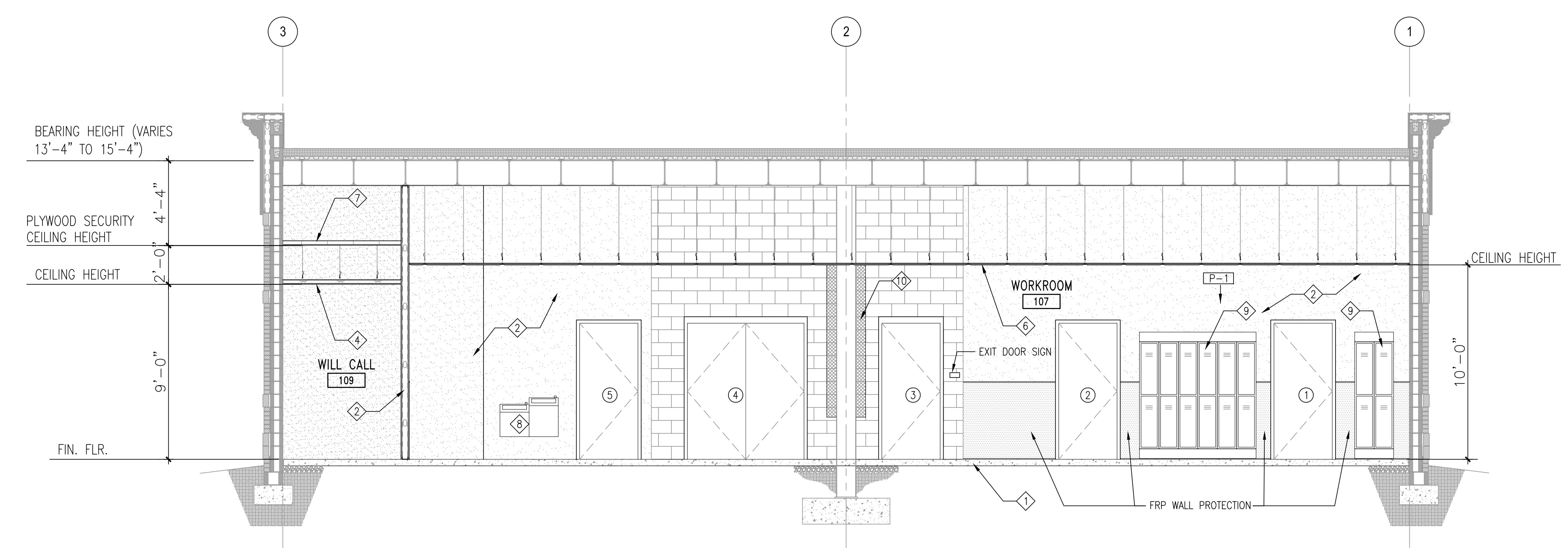
1. SEE PLUMBING, MECHANICAL, AND ELECTRICAL DRAWINGS FOR ADDITIONAL NOTES.
2. UNLESS OTHERWISE NOTED, INTERIOR DOOR ROUGH OPENING SHALL BE 4" FROM ADJOINING WALL PARTITION.
3. CONTRACTOR TO VERIFY ALL EXISTING DIMENSIONS BEFORE COMMENCING WORK.
4. CONTRACTOR TO PROTECT EXISTING BUILDING SHELL ITEMS INCLUDING WALLS, COLUMNS, STAIRS, FRAMING, AND ROOF, TYPICAL.
5. SEE SCHEDULES SHEET A2.1 FOR FLOOR AND WALL FINISHES, DOORS, AND WINDOWS.
6. ALL NEW CONSTRUCTION SHALL BE PER USPS STANDARDS.

### KEYED NOTES

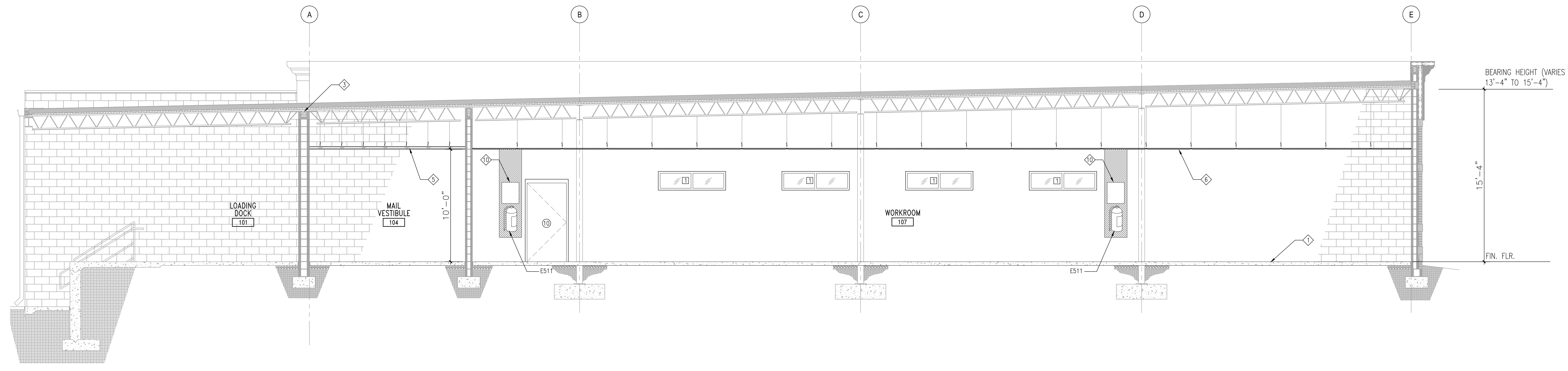
1. PROVIDE NEW 4" REINFORCED CONCRETE SLAB ON 15 MIL VAPOR BARRIER OVER EXISTING GRAVEL BED. SEE CONTROL JOINT PLAN SHEET A1.0.
2. PROVIDE NEW 20GA 3-5/8" METAL STUD WALLS WITH FINISHES. SEE A6.4 FOR WALL TYPES.
3. PROVIDE MINERAL WOOL PACKED BETWEEN FLUTES OF METAL DECK AND TOP OF PARTITION. SEE DETAIL 1/A6.4.
4. PROVIDE NEW SUSPENDED GYPSUM BOARD CEILING. PAINT. SEE DETAIL 6/A7.3.
5. PROVIDE NEW SUSPENDED PLYWOOD CEILING. PAINT. SEE DETAIL 9/A7.3.
6. PROVIDE NEW 2'X4' ACOUSTICAL CEILING TILE, GRID, AND HANGARS.
7. PROVIDE NEW 3-5/8" 20GA METAL STUD FRAMING @ 16" O.C. AND PLYWOOD SECURITY CEILING @ 11'-0" A.F.F. IN WILL-CALL ROOM 109.
8. PROVIDE NEW HI-LOW ADA ACCESSIBLE WATER FOUNTAIN, SEE DETAIL 16/A5.1.
9. PROVIDE 8 NEW DOUBLE LOCKERS, SEE DETAIL 11/A6.4.
10. PROVIDE NEW FIRE EXTINGUISHER PER USPS STANDARDS. INSTALL PER NFPA 72. PAINT AREA RED AS SHOWN TO MATCH DETAILS. SEE DETAIL 5/A7.3.

### BUILDING SECTION LEGEND

- ① DOOR NUMBER - SEE SHEET A2.1 FOR DOOR SCHEDULE
- WINDOW TYPE - SEE SHEET A2.1 FOR WINDOW TYPES
- OFFICE ROOM NAME & NUMBER - SEE SHEET A2.1 FOR FINISH SCHEDULE
- 101



**1 BUILDING SECTION**  
SCALE: 1/4" = 1'-0"



**2 BUILDING SECTION**  
SCALE: 1/4" = 1'-0"





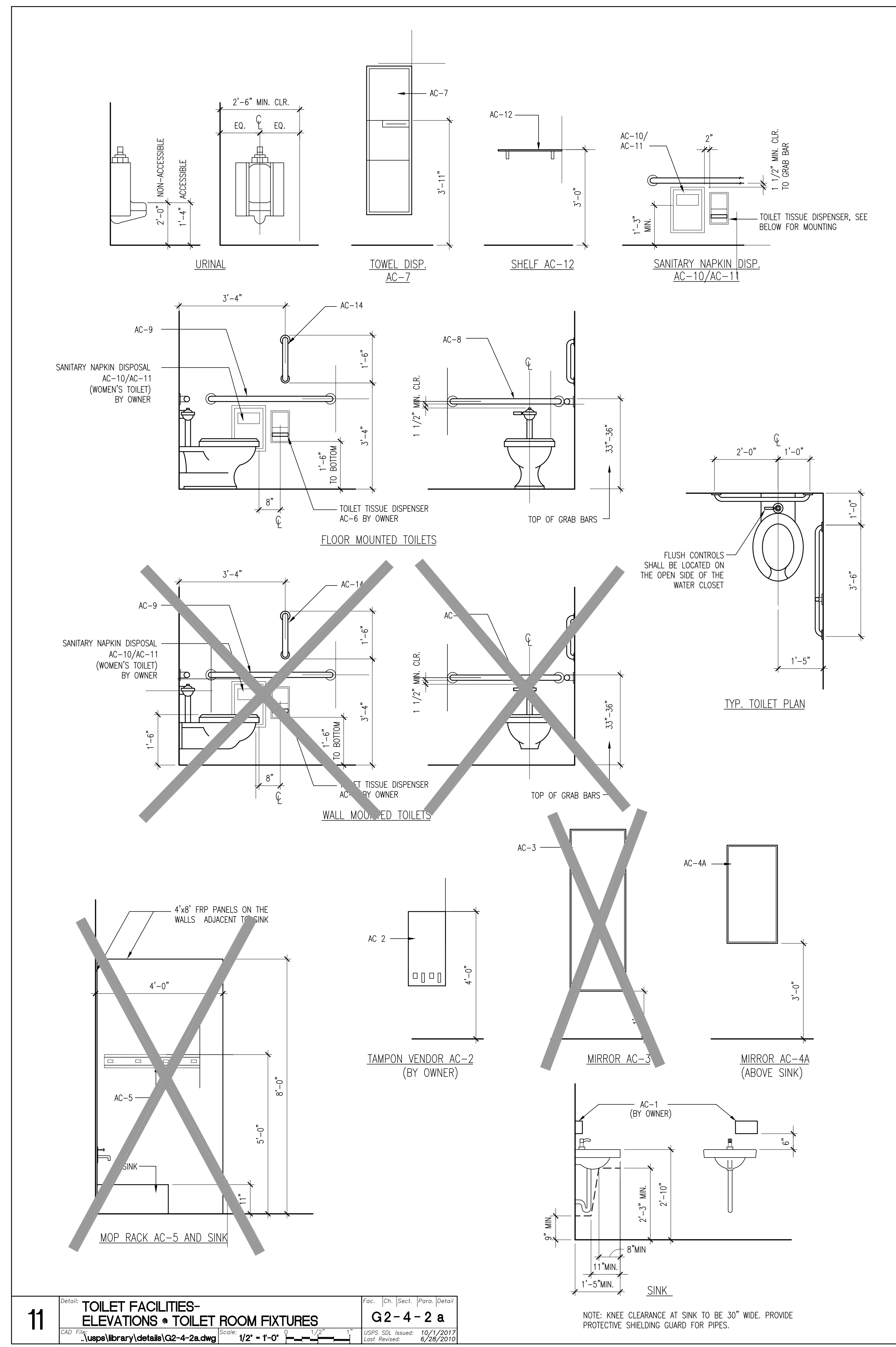
The Walker Group Architecture, Inc  
 PO Box 541, New Bern, NC 28563  
 252.636.8778 (PHONE)  
 252.636.8992 (FAX)

INTERIOR UPFIT  
 USPS SPOUT SPRINGS NC CAX  
 XXXXXXXXXX  
 XXXXXXXXXX

UNITED STATES  
 POSTAL SERVICE

A5.1 Architectural  
 Interior Elevations and Details  
 Scale: As Indicated Date: 5/17/2018  
 Project: SPOUT SPRINGS INTERIOR UPFIT  
 USPS File Number: XXXXXX  
 USPS Project Number: 097932

© Copyright, 1997-2015, United States Postal Service



**3** TOILET FACILITIES - SECTION - GRAB BAR  
 G2-4-2 b  
 3" = 1'-0"

**ELEVATION LEGEND**

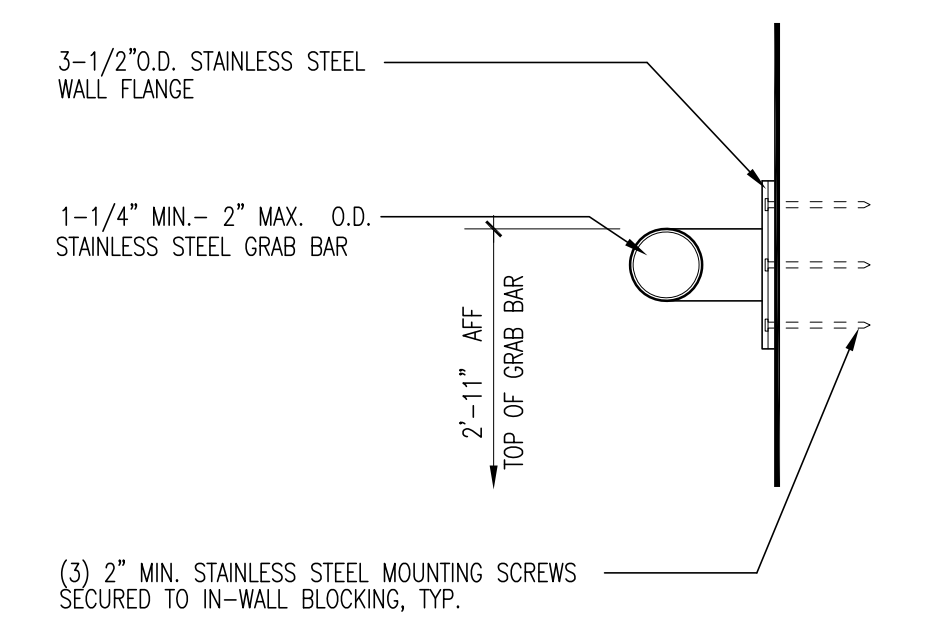
- ① DOOR NUMBER - SEE SHEET A2.1 FOR DOOR SCHEDULE
- OFFICE ROOM NAME & NUMBER - SEE SHEET A2.1 FOR FINISH SCHEDULE

**GENERAL NOTES**

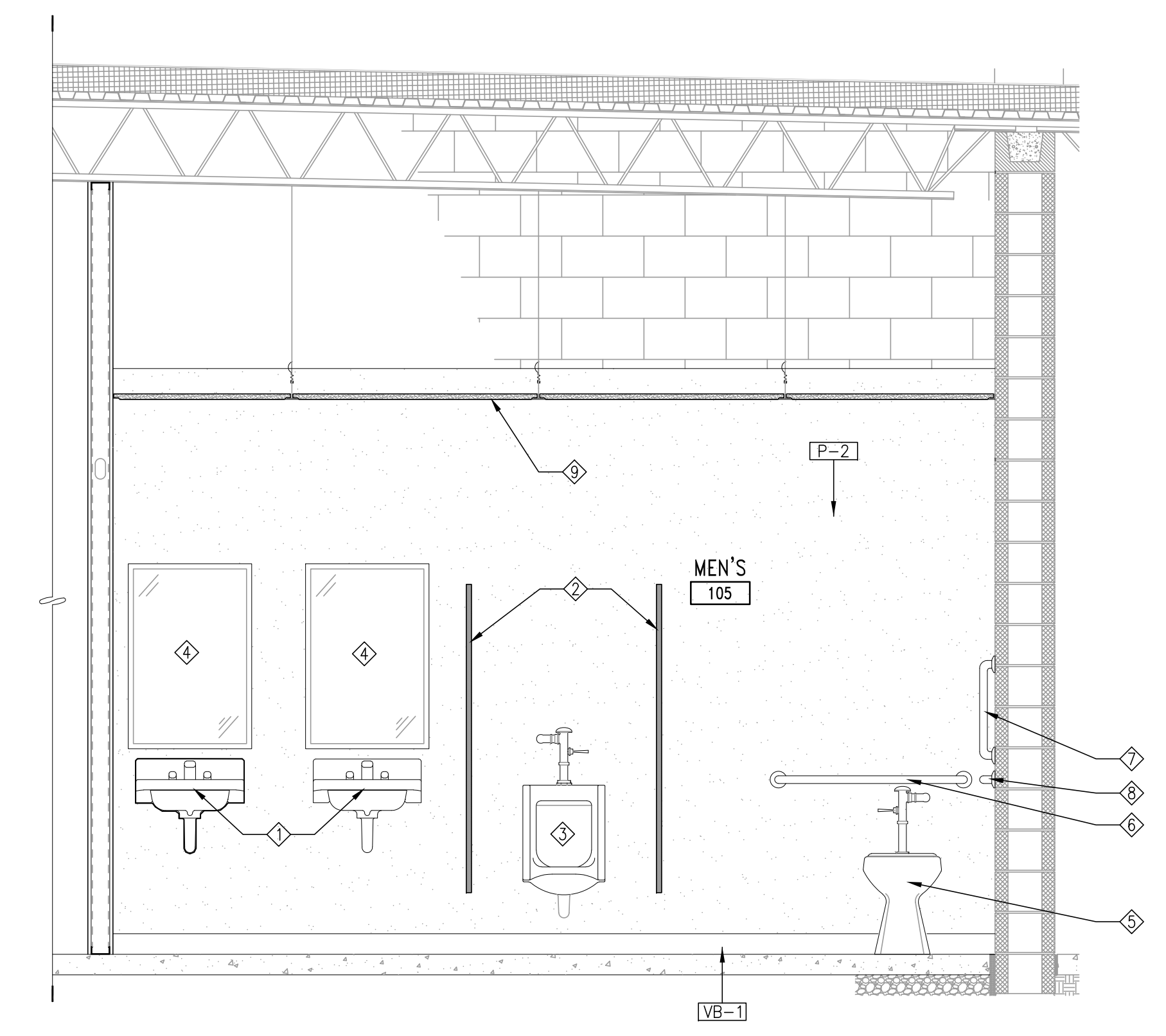
1. SEE PLUMBING, MECHANICAL, AND ELECTRICAL DRAWINGS FOR ADDITIONAL NOTES.
2. UNLESS OTHERWISE NOTED, INTERIOR DOOR ROUGH OPENING SHALL BE 4" FROM ADJOINING WALL PARTITION.
3. CONTRACTOR TO VERIFY ALL EXISTING DIMENSIONS BEFORE COMMENCING WORK.
4. CONTRACTOR TO PROTECT EXISTING BUILDING SHELL ITEMS INCLUDING WALLS, COLUMNS, STAIRS, FRAMING, AND ROOF. TYPICAL.
5. SEE SCHEDULES SHEET A2.1 FOR FLOOR AND WALL FINISHES, DOORS, AND WINDOWS.
6. ALL NEW CONSTRUCTION SHALL BE PER USPS STANDARDS.

**KEYED NOTES**

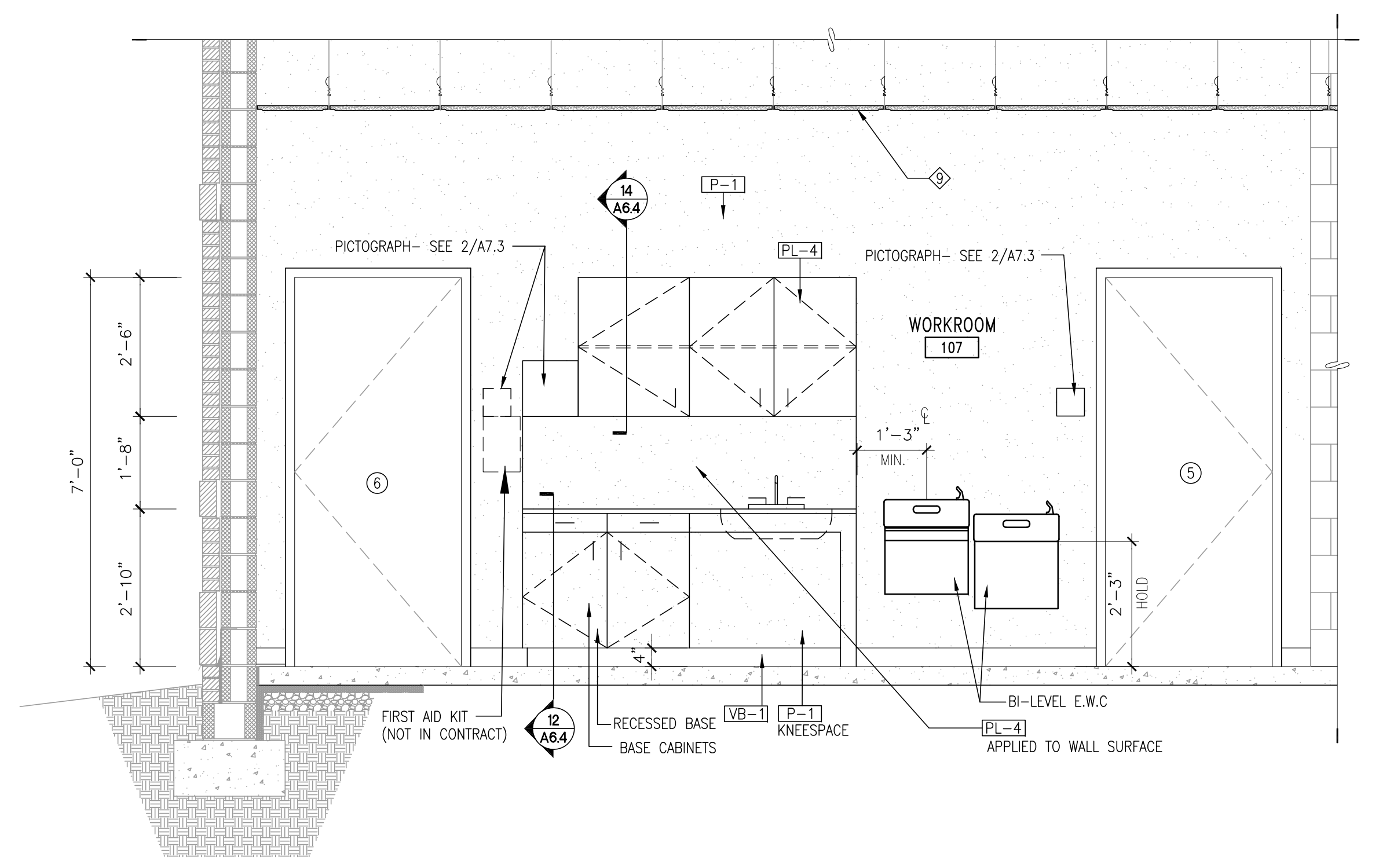
- 1 WALL MOUNTED SINK. SEE DETAIL 11/A5.1.
- 2 PROVIDE 1" THICK WATER/GRAFFITI RESISTANT, NON-ABSORBENT PLASTIC FACED TOILET/URINAL PARTITIONS PER USPS STANDARDS. CLEAR WIDTH AS SHOWN.
- 3 WALL MOUNTED URINAL. CENTERLINE OF URINAL SHALL BE MIN. SEE DETAIL 11/A5.1.
- 4 24" X 36" ADA TILT MIRROR W/ STAINLESS STEEL FRAME. SEE DETAIL 11/A5.1.
- 5 FLOOR MOUNTED FLUSH VALVE ADA TOILET. SEE DETAIL 11/A5.1.
- 6 36" GRAB BAR. SEE DETAIL 11/A5.1.
- 7 18" GRAB BAR. SEE DETAIL 11/A5.1.
- 8 42" GRAB BAR. SEE DETAIL 11/A5.1.
- 9 PROVIDE NEW 2'X4' ACOUSTICAL CEILING TILE, GRID, AND HANGARS. SEE SHEET A2.1.



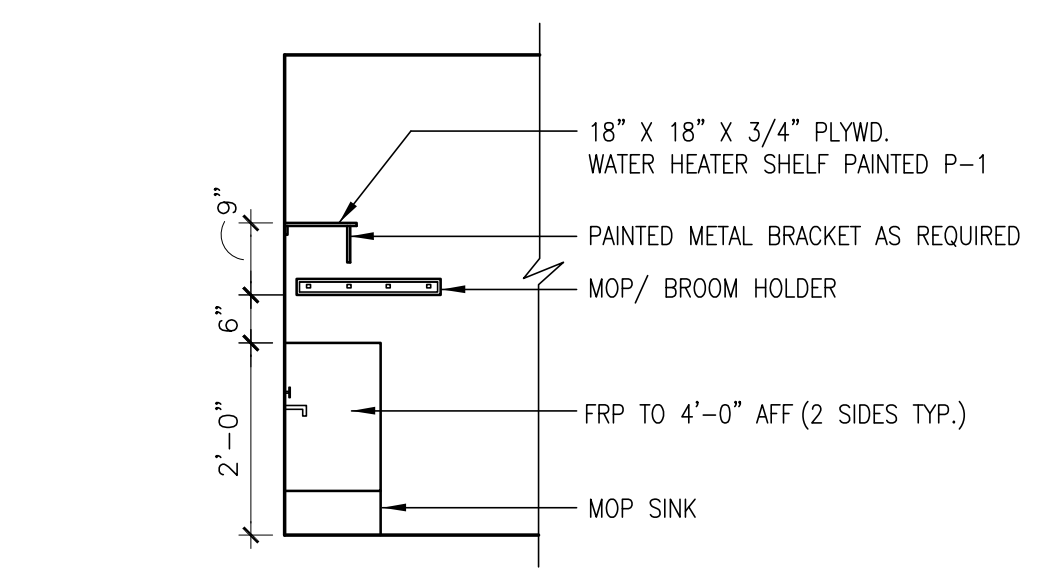
**3** TOILET FACILITIES - SECTION - GRAB BAR  
 G2-4-2 b  
 3" = 1'-0"



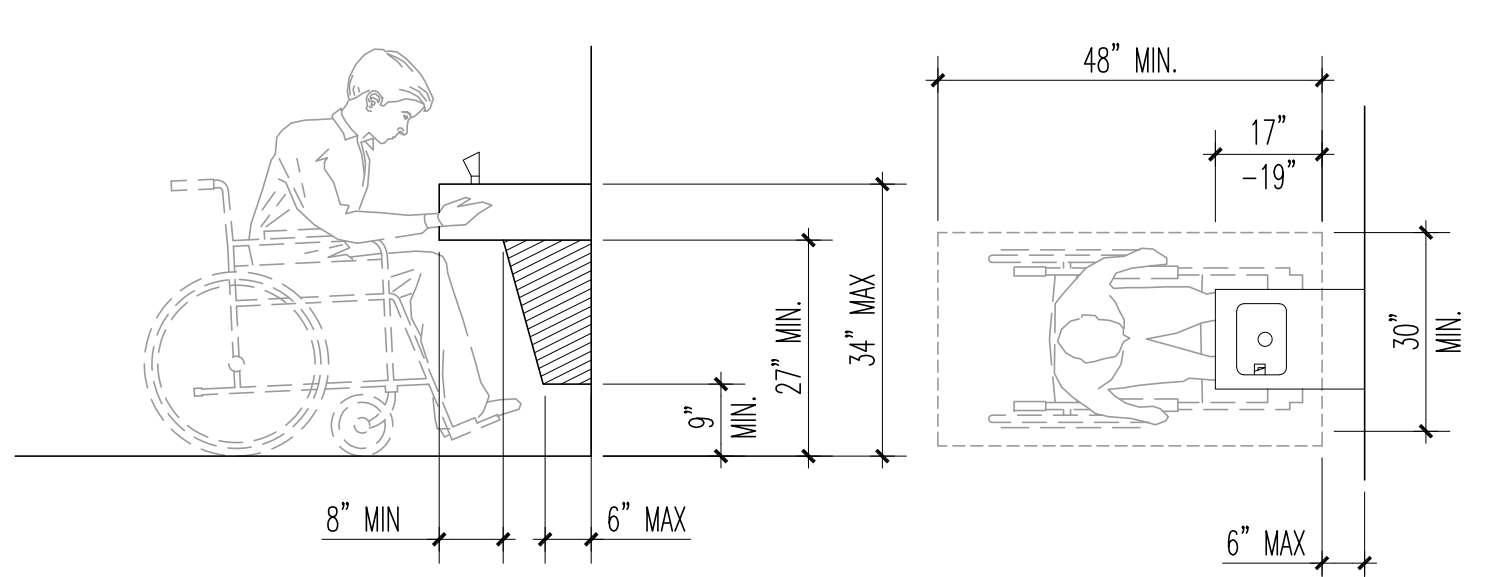
**14** INTERIOR ELEVATION  
 SCALE: 1/2" = 1'-0"



**17** INTERIOR ELEVATION  
 SCALE: 1/2" = 1'-0"



**15** MOP RACK AND SINK DETAIL  
 SCALE: 1/2" = 1'-0"



**16** ADA DRINKING FOUNTAIN DETAIL  
 SCALE: N.T.S.