

**SANITARY SYSTEM**

OWNER: PALE B. Nicholson PHONE: 639-8731 DATE REC'D: 1/11/94 DATE EVALUATED: 1/15/94  
 ADDRESS: S.R. 1006 Old St Rd. PROPERTY IDENTIFICATION NO.: \_\_\_\_\_  
 COUNTY: Harnett PROPERTY SIZE: 0.93 Acres PROPOSED FACILITY: \_\_\_\_\_  
 LOCATION OF SITE: 401N T/R 421 T/L 27 1st Stop sign straight onto 1006 3 miles on left.  
 WATER SUPPLY: On-Site Well  Community \_\_\_\_\_ Public \_\_\_\_\_ EVALUATION BY: Auger Boring  Pit \_\_\_\_\_ Cut \_\_\_\_\_

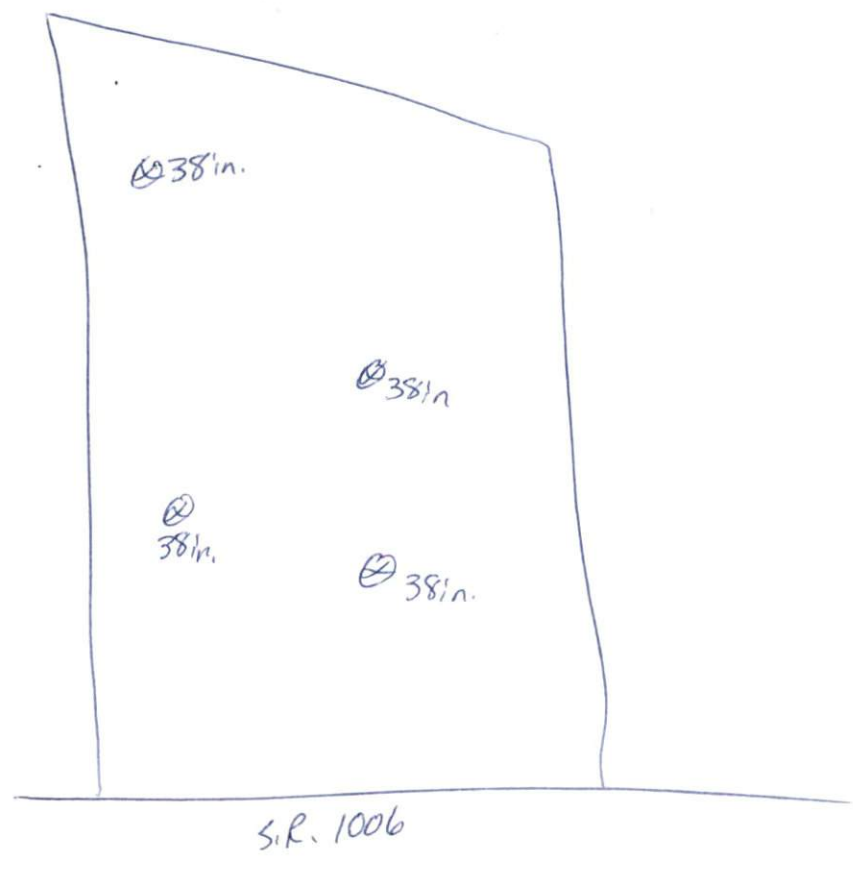
LANDSCAPE POSITION	Group	TEXTURE	Appl. Rate		MOIST	CONSISTENCE		WET	STRUCTURE	MINER
			Fill	Rate						
R - Ridge	I	s - sand	1.2-0.8		vfr - very friable	fr - friable	Ns - non-sticky	sg - single grain		1:1, 2:1
S - Shoulder slope		ls - loamy sand								
L - Linear slope	II	sl - sandy loam	0.8-0.6		fl - firm	vfl - very firm	Ss - slightly sticky	m - massive		
FS - Foot slope		l - loam								
N - Nose slope	III	sil - silt	0.6-0.3		ff - firm	vff - very firm	S - sticky	gr - granular		
H - Head slope		sll - silt loam								
Cc - Concave slope	IV	scl - silty clay loam	0.4-0.1		efl - extremely firm		Vs - very sticky	sbk - subangular blocky		
Cv - Convex slope		cl - clay loam								
T - Terrace		scl - sandy clay loam								
FP - Flood Plain		sc - sandy clay					Np - non-plastic	pl - platy		
		slc - silty clay					Sp - slightly plastic	pr - prismatic		
		c - clay					P - plastic			
							Vp - very plastic			

Use the above standard abbreviations.

- NOTES:**
- Horizon Depth - in inches
  - Depth of Fill - in inches from land surface
  - Restrictive Horizon - thickness and inches from land surface
  - Saprolite - S (suitable) or U (unsuitable)

- NOTES:**
- Soil Wetness - inches from land surface to free water or inches from land surface to soil colors with chroma 2 or less - record Munsell color chip designation
  - Classification - S (suitable), PS (provisionally suitable) or U (unsuitable)
  - Long-Term Acceptance Rate - gal/day/ft<sup>2</sup>

DHS 2801 (Revised \_\_\_\_\_)  
 Sanitation Branch (Review \_\_\_\_\_)



FACTORS	PROFILE 1	PROFILE 2	PROFILE 3	PROFILE 4	PROFILE 5
DISCAPE POSITION	upland				
PE (%)	0-5%				
RIZON I DEPTH	Taxsil 0-8in.				
ture Group					
nsistence					
ucture					
neralogy					
RIZON II DEPTH	Clay				
ture Group	Group II				
nsistence	8-38in.				
ucture					
neralogy					
RIZON III DEPTH	Saprolite below 38in.				
ture Group					
nsistence					
ucture					
neralogy					
RIZON IV DEPTH					
ture Group					
nsistence					
ucture					
neralogy					
L WETNESS	No mottles Chrom 52				
TRICTIVE HORIZON	NONE				
ROLITE	below 38in.				
SSIFICATION	P.S.				
G-TERM					
EPTANCE RATE					

FACTORS	PROFILE 1	PROFILE 2	PROFILE 3	PROFILE 4	PROFILE 5
DISCAPE POSITION					
PE (%)					
RIZON I DEPTH					
ture Group					
nsistence					
ucture					
neralogy					
RIZON II DEPTH					
ture Group					
nsistence					
ucture					
neralogy					
RIZON III DEPTH					
ture Group					
nsistence					
ucture					
neralogy					
RIZON IV DEPTH					
ture Group					
nsistence					
ucture					
neralogy					
. WETNESS					
TRICTIVE HORIZON					
ROLITE					
SSIFICATION					
G-TERM					
EPTANCE RATE					

CLASSIFICATION: P.S. SITE LONG-TERM ACCEPTANCE RATE:  
 ELUATED BY: A. B. O'Halloran OTHER(S) PRESENT:  
 RECOMMENDATION: Install conventional system in 2 Lines 3' x 150' 900# on Contour